



alpine-property

Alpine Property SAS au capital de 3 450 € - RCS Thonon les Bains 508 578 556 - siège: 153 chemin du Chargeau, 74110 Morzine, France - Titulaire de la Carte Professionnelle n° CPI 7401 2016 000 017 391 délivrée par la CCI de la Haute Savoie

Tel: +44 (0)208 123 2384

Email: info@alpine-property.com

Web: www.alpine-property.com

Chalet Les Pesses

Chatel, Châtel & Vallée, Portes Du Soleil

595 000 €uros



Contact

Contact **Ed Ockelton** about this property.

Tel: +33 6 77 83 19 98

Email: ed@alpine-property.com

Key Features

Price	595 000 Euros
Status	SOLD
Last updated	09/04/2013
Area	Portes Du Soleil
Location	Châtel & Vallée
Village	Chatel
Bedrooms	7
Bathrooms	6
Floor area	250 m ²
Land area	1080 m ²
Detached	Yes
Chimney	Wood burning stove
Nearest skiing	1.5 km
Nearest shops	2 km
Garden	Yes
Drainage	Mains drains
Energy efficiency rating	TBC
CO2 emissions	TBC
Agency fees	Paid by the seller

Property Description

Chalet Les Pesses is situated approximately half way between Chatel and La Chapelle d'Abondance. The nearest skiing is 1,5km away at La Chapelle and access to the vast linked Portes du Soleil ski area is just a short drive away in the other direction, at Chatel. Both Chatel and La Chapelle provide a wide selection of shops and amenities all year round.

The chalet was built in 1974 and was recently renovated to create a six bedroom chalet, with a separate one bedroom apartment. The chalet represents excellent value for money in terms of price/m² and also offers flexibility in terms of usage. Currently run as a catered chalet with a separate host's apartment, it is possible to keep the layout the same, or increase the size of the apartment (without any building work) resulting in a separate rentable chalet and apartment combination - perfect for those looking to make a return on the main bit of the property, whilst retaining "owners accommodation" which can be used when the main part is rented out. The chalet has just had a brand new boiler and central heating system installed.

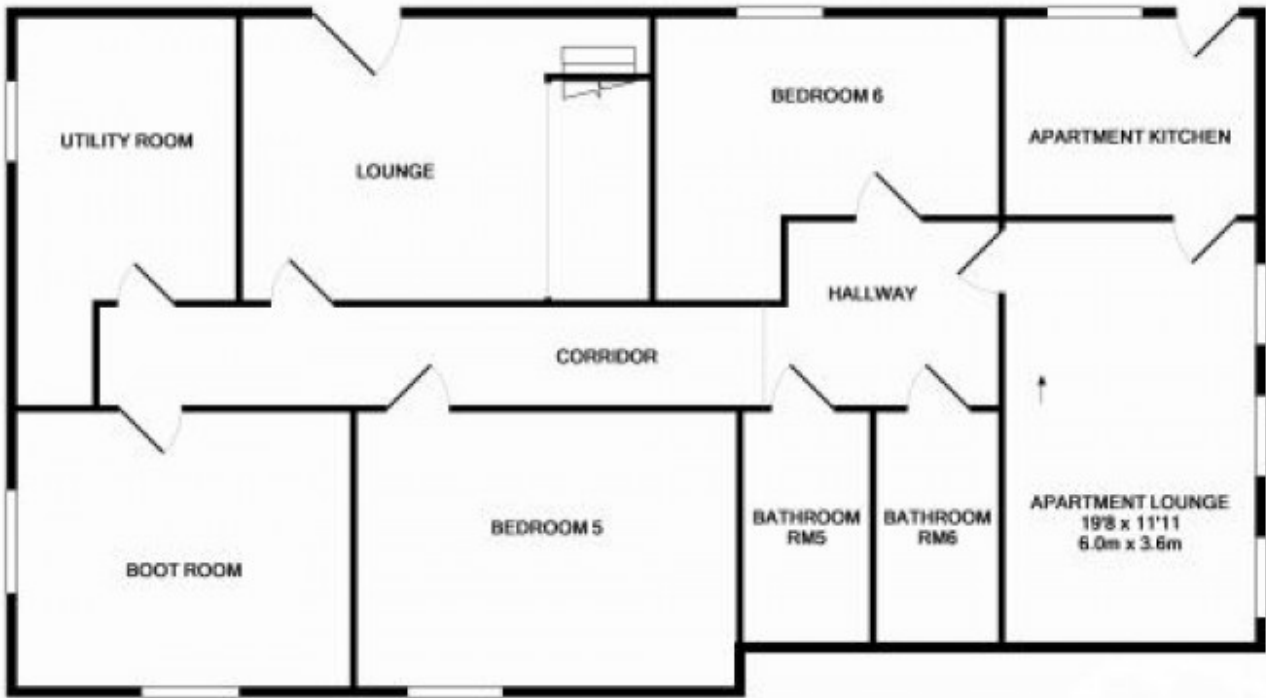
Chalet Les Pesses has a floor area of 250 m² and comprises:

Ground floor: sitting room, 2 bedrooms and 2 shower rooms with WC, an apartment with living room, kitchen, bedroom and bathroom on the mezzanine level.

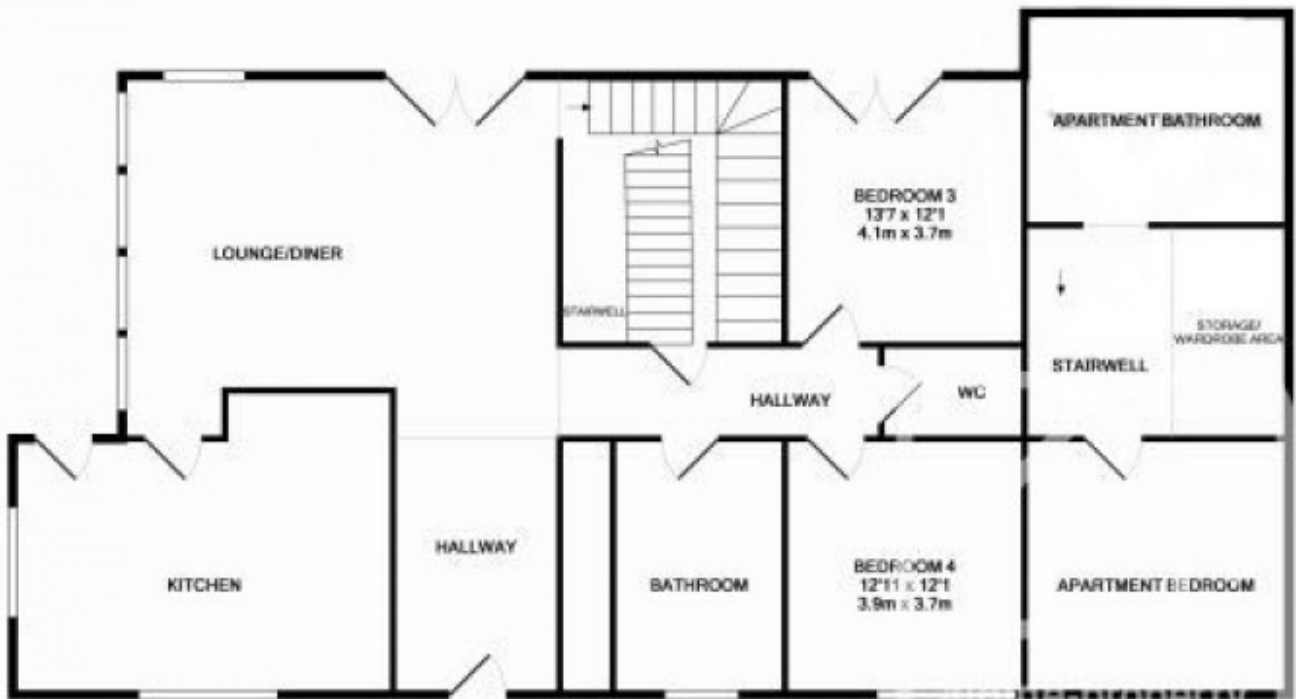
1st floor with large living/dining room and fireplace, kitchen, 2 bedrooms, bathroom, WC, and S/W facing balcony.

2nd floor with 2 bedrooms with balcony (one with shower and hand basin), main bathroom.

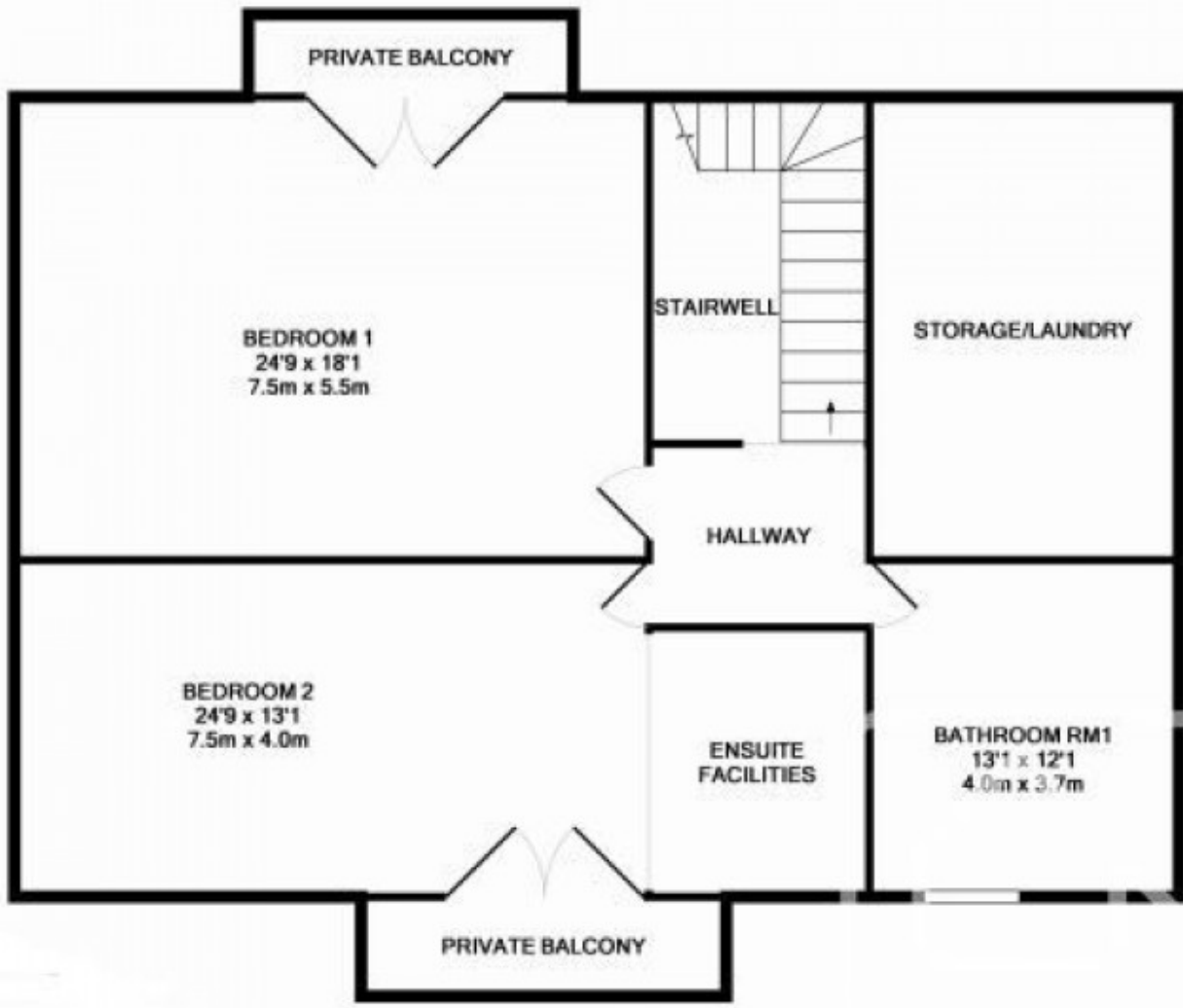
Outside the chalet, there is a flat and useable garden and decking. The chalet occupies a plot of land of 1080 m².



BASEMENT LEVEL (not to scale)



GROUND FLOOR (not to scale)



1ST FLOOR (not to scale)





















