



**alpine-property**

Alpine Property SAS au capital de 3 450 € - RCS Thonon les Bains 508 578 556 - siège: 153 chemin du Chargeau, 74110 Morzine, France - Titulaire de la Carte Professionnelle n° CPI 7401 2016 000 017 391 délivrée par la CCI de la Haute Savoie

Tel: +44 (0)208 123 2384

Email: [info@alpine-property.com](mailto:info@alpine-property.com)

Web: [www.alpine-property.com](http://www.alpine-property.com)

# Chalet Verney

**Taninges, Samoëns & Vallée, Grand Massif**

**689 000 Euros**



## Contact

Contact about this property.

**Tel:**

**Email:**

# Key Features

<b>Price</b>	689 000 Euros
<b>Status</b>	SOLD
<b>Last updated</b>	06/01/2009
<b>Area</b>	Grand Massif
<b>Location</b>	Samoëns & Vallée
<b>Village</b>	Taninges
<b>Bedrooms</b>	3
<b>Bathrooms</b>	2
<b>Floor area</b>	129 m²
<b>Land area</b>	1093 m²
<b>Detached</b>	Yes
<b>Chimney</b>	Open fire
<b>Nearest skiing</b>	7.5 km
<b>Nearest shops</b>	2 km
<b>Garden</b>	Yes
<b>Garage</b>	Double
<b>Drainage</b>	Septic tank
<b>Energy efficiency rating</b>	TBC
<b>CO2 emissions</b>	TBC
<b>Agency fees</b>	Paid by the seller

## Property Description

Chalet Verney occupies a sunny position just above the Samoens valley. From here, there are great views of the valley and the sunny aspect gives the interior of the chalet a very light and airy feeling.

The chalet is conveniently situated for good access to skiing in both the Grand Massif and the Portes du Soleil ski domains. The nearest skiing is at Morillon, approx. 6km away but the more popular and well known, ski towns of Samoens and Les Gets are also just a 15 minute drive from the chalet. The nearest shops and local services are just 2km away at Taninges. Geneva airport is approx. 1 hours drive from the chalet.

Chalet Verney was constructed in 2001 to a high standard and remains in excellent condition. The is electric underfloor heating supplemented with electric radiators. The total floor area of the chalet is 268m2, of which 129m2 is classified as habitable floor space. Outside the chalet there is a garden and a private driveway with a good sized car parking area.

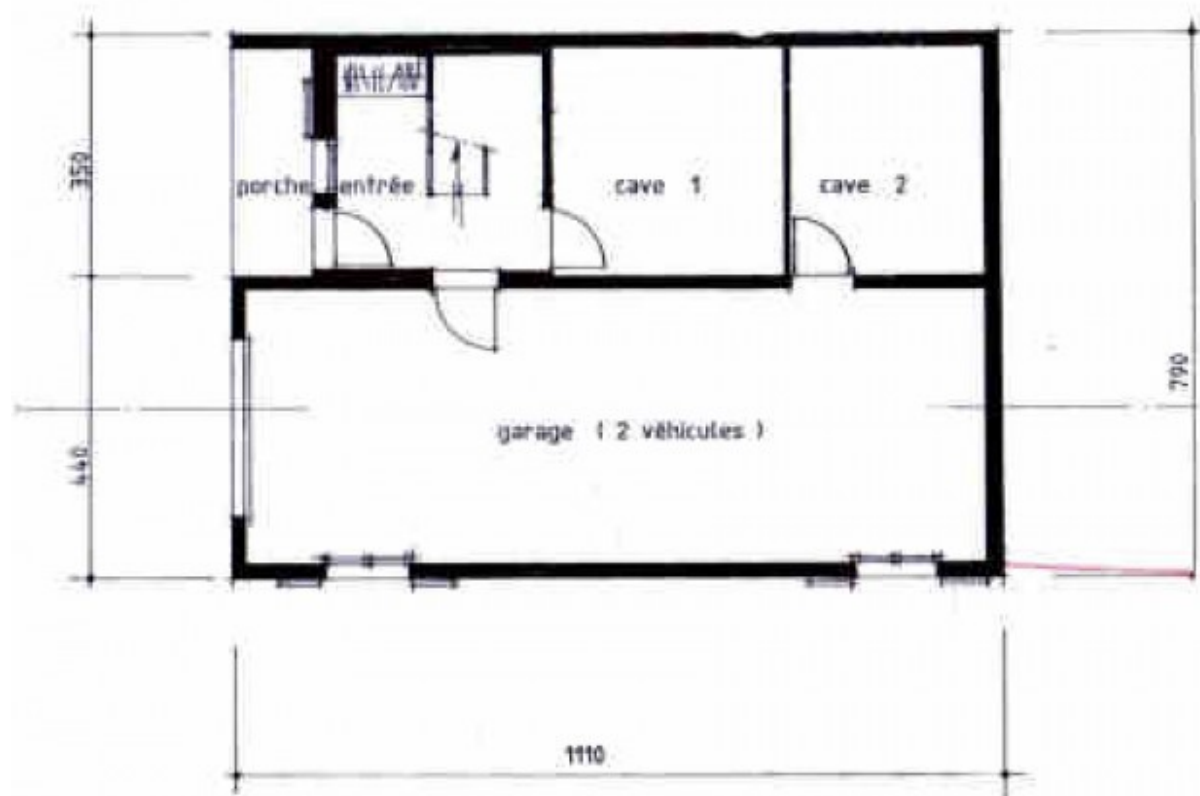
The chalet is on 3 floors and the accommodation comprises:

Lower ground floor: entrance hall, double garage (currently used as storage area), 2 cellar rooms.

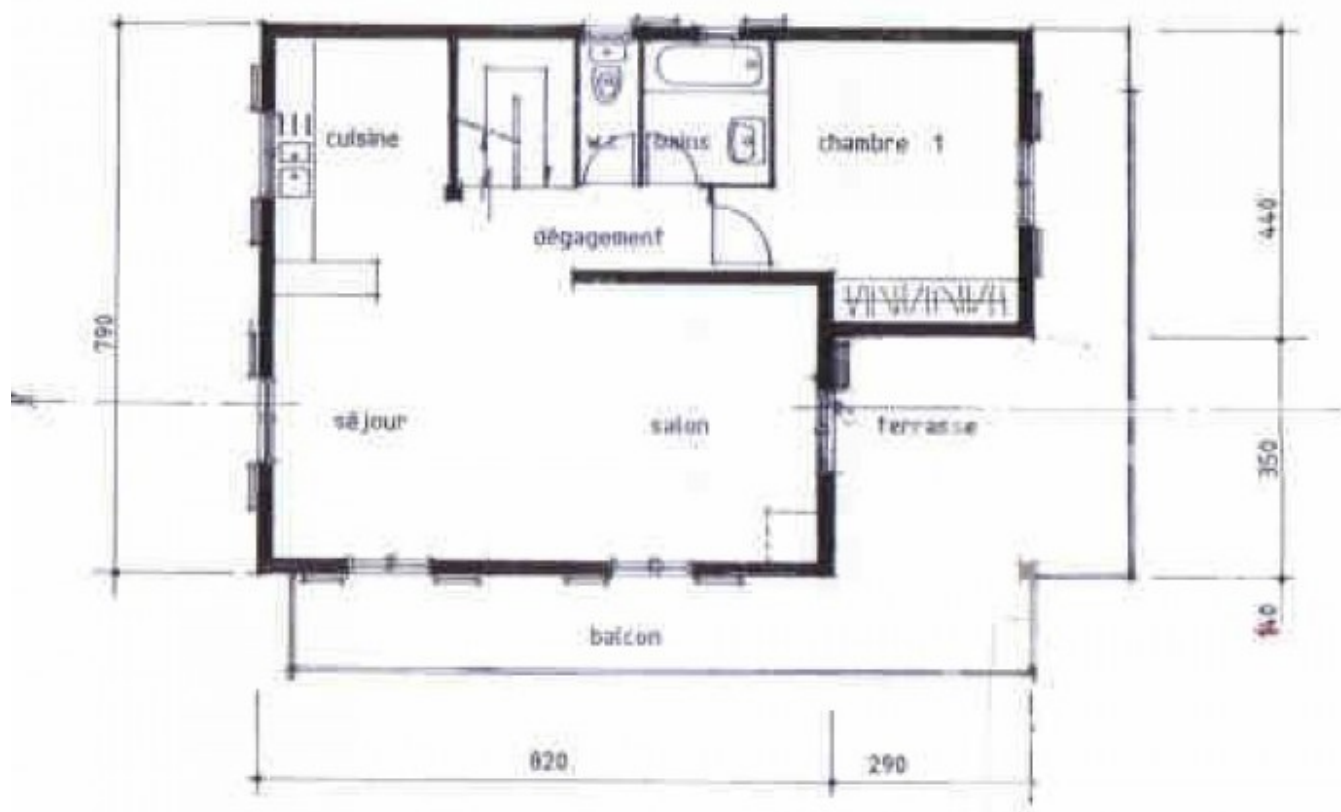
Ground floor: open plan living room with kitchen, bedroom, bathroom, WC.

First floor: bedroom, mezzanine bedroom/sitting area, bathroom, WC.

## SOUS SOL



## REZ de JARDIN



## ETAGE



















