



alpine-property

Alpine Property SAS au capital de 3 450 € - RCS Thonon les Bains 508 578 556 - siège: 153 chemin du Chargeau, 74110 Morzine, France - Titulaire de la Carte Professionnelle n° CPI 7401 2016 000 017 391 délivrée par la CCI de la Haute Savoie

Tel: +44 (0)208 123 2384

Email: info@alpine-property.com

Web: www.alpine-property.com

Chalet Coudray

Samoëns, Samoëns & Vallée, Grand Massif

1 645 000 €uros



Contact

Contact **Lexie Starling** about this property.

Tel: +33 6 47 32 08 81

Email: lexie@alpine-property.com

Key Features

Price	1 645 000 €uros
Status	FOR SALE
Last updated	08/12/2025
Area	Grand Massif
Location	Samoëns & Vallée
Village	Samoëns
Bedrooms	7
Bathrooms	7
Floor area	420 m²
Land area	1840 m²
Detached	Yes
Heating	Underfloor heating
Chimney	Wood burning stove
Nearest skiing	2.8 km
Garden	Yes
Garage	Double
Drainage	Mains drains
Energy efficiency rating	E (336)
CO2 emissions	C (11)
Agency fees	Paid by the seller

Property Description

Nestled in a highly sought-after hillside location in Samoens, this stunning chalet epitomises alpine living and is perfect for friends and family. With an impressive seven bedrooms and seven bathrooms spread across three spacious levels, it provides a harmonious blend of comfort and style.

The habitable surface is approximately 288 m² designed for comfortable living and social gathering. A 20-minute walk takes you to the village centre, where you'll enjoy easy access to local shops and restaurants, and it's just a five-minute drive to the Grand Massif Express for immediate access to the local ski domaine (265Km of pistes and highest skiable altitude 2,500m). Plus, it's conveniently located just over an hour from Geneva International Airport and 20 minutes from the nearest train station.

Constructed in 2003 by the reputable local builder La Croix, this chalet beautifully combines traditional chalet style with modern conveniences. Its south-facing orientation offers exceptional views across the valley, flooding the interior with natural light. The clever two-apartment layout creates distinct zones, making it ideal for extended family living or rental opportunities.

Entertaining is a joy here, in both winter and summer whether cosily ensconced by the wood burner after a day on the slopes or lounging by the heated pool and hot tub, absorbing the breathtaking views of the majestic mountains.

The ground level features a welcoming entrance with a designated cloakroom, and a spacious garage that easily accommodates several cars. Also on this level, you'll find a home gym with a sauna, a games room complete with its own bar and direct access to the inviting pool area, two ski/ bike storage rooms, a laundry, a wine store and a shower room with a WC.

Ascending to **the first floor**, you'll discover the two versatile wings of the chalet, providing both spacious and flexible accommodation.

The eastern wing boasts a welcoming kitchen featuring a bespoke Swedish design with a gas AGA, complemented by a bright living and dining room with a wood burning fire that opens onto a sun-drenched south-facing balcony as well as access to a flagstone terrace for alfresco dining and view of the pool and mountains beyond. This level also

includes a study (which can double as a bedroom) and a guest WC. **Upstairs**, in the east wing you'll find an inviting office snug under the eaves, a principal bedroom with an ensuite bathroom and a private south-facing balcony offering captivating views, as well as another double bedroom to the north with an ensuite jack-and-jill bathroom.

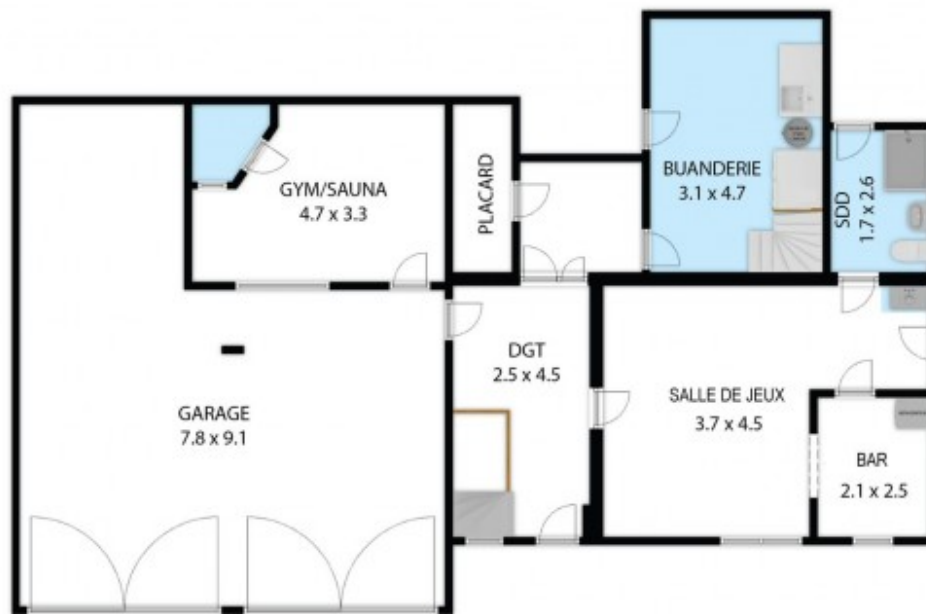
Similarly, the adjacent western wing of the house features its own well-appointed kitchen, a laundry area with an external door accessing an external staircase, and a spacious living room with a wood burning stove leading to a south-facing balcony. This level also includes an ensuite double bedroom and a guest WC. Upstairs in the west wing, there is a spacious landing/ play area plus three additional ensuite bedrooms. There are two large south facing bedrooms with ensuites and magnificent mountain views. A large bedroom at the rear has twin beds and an ensuite.

The property is connected to mains drains and is heated with electric underfloor heating and convector heaters, ensuring comfort throughout the seasons.

This remarkable chalet is a rare find, offering extraordinary views and flexible accommodation with seven bedrooms and seven bathrooms in an unrivalled setting.



Toutes les dimensions indiquées sont approximatives.
The plans shown are approximate and for information purposes only.



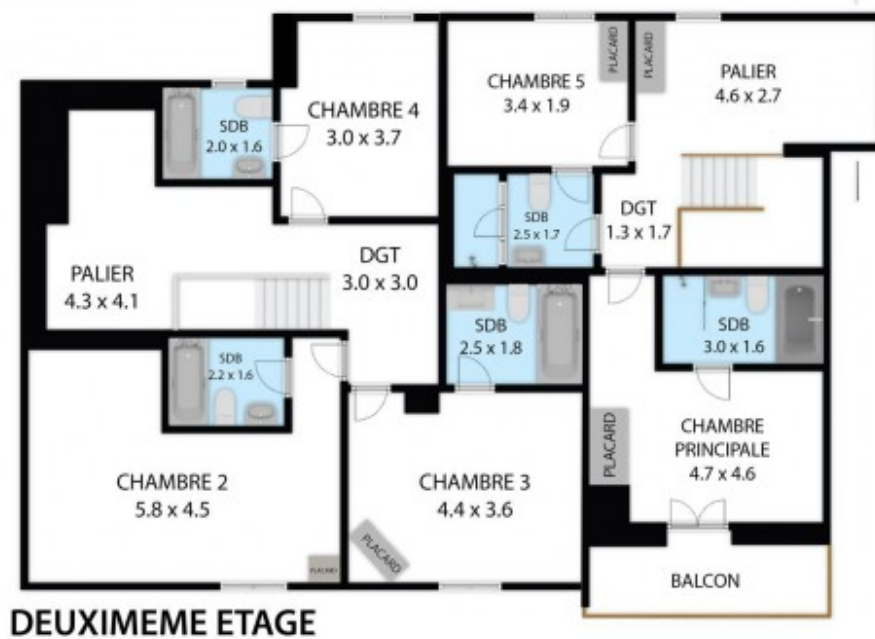
REZ DE CHAUSSEE

Toutes les dimensions indiquées sont approximatives.
The plans shown are approximate and for information purposes only.



PREMIER ETAGE

Toutes les dimensions indiquées sont approximatives.
The plans shown are approximate and for information purposes only.



DEUXIEME ETAGE

Toutes les dimensions indiquées sont approximatives.
The plans shown are approximate and for information purposes only.

















