



alpine-property

Alpine Property SAS au capital de 3 450 € - RCS Thonon les Bains 508 578 556 - siège: 153 chemin du Chargeau, 74110 Morzine, France - Titulaire de la Carte Professionnelle n° CPI 7401 2016 000 017 391 délivrée par la CCI de la Haute Savoie

Tel: +44 (0)208 123 2384

Email: info@alpine-property.com

Web: www.alpine-property.com

Ferme du Chardonnet, Lot 2

Argentière, Chamonix & Vallée, Mont Blanc

389 000 €uros



Contact

Contact **Claire Williams** about this property.

Tel: +33 6 23 49 38 20

Email: claire@alpine-property.com

Key Features

| | |
|---------------------------------|--------------------|
| Price | 389 000 Euros |
| Status | UNDER CONTRACT |
| Last updated | 02/12/2025 |
| Area | Mont Blanc |
| Location | Chamonix & Vallée |
| Village | Argentière |
| Bedrooms | 1 |
| Bathrooms | 1 |
| Floor area | 46.8 m² |
| Heating | Combined system |
| Nearest skiing | 750 m |
| Nearest shops | 1 km |
| Drainage | Mains drains |
| Number of lots | 5 |
| Procédure en cours | No |
| Energy efficiency rating | TBC |
| CO2 emissions | TBC |
| Agency fees | Paid by the seller |

Property Description

Don't miss out: one of only two remaining one bed duplex apartments in a small residence of 5 apartments!

Option to buy lots 1 and 2 to create a spacious three bed apartment with balcony looking directly at the Mont Blanc!

A rare opportunity to create your own bespoke mountain retreat in the heart of Argentière, just steps from the Grands Montets ski lifts and surrounded by world-class hiking and biking trails.

Located in the sought-after Chamonix valley, la Ferme du Chardonnet is just a 10 drive from Chamonix town centre, with both bus and train stops in close proximity.

Apartment 2 is a 47m2 one bedroom duplex apartment with balcony and stunning Mont Blanc views within a beautifully renovated small development of five apartments, offering a shell apartment ready to be customised to your needs. Water, electric, waste connections will be in place, giving you complete freedom to design your dream interior.

Proposed layout is:

Ground floor: Entrance, WC, bathroom, double bedroom

Upper floor: Open plan kitchen /lounge area opening onto a 4,8m2 south-facing balcony.

We can recommend both project managers and interior designers to accompany you in your choice of layout and materials.

Option to purchase a private garage and exterior parking spaces with each apartment for an additional fee.

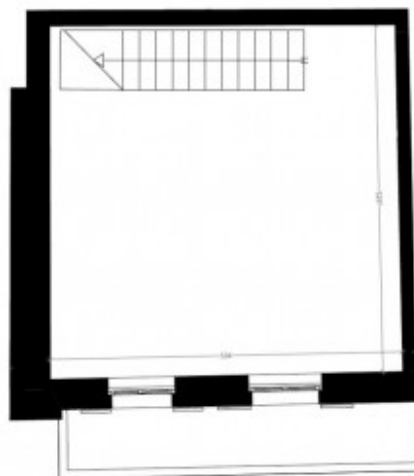
Also available:-

[Ferme du Chardonnet, Lot 1](#)

The property is covered by the copropriété rules.



LA FERME DU CHARDONNET



Lot 02

Plan de l'étage

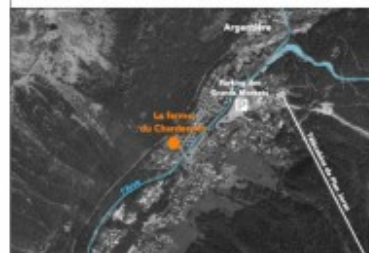
Type : T2

Surface de plancher : 46.8 m²

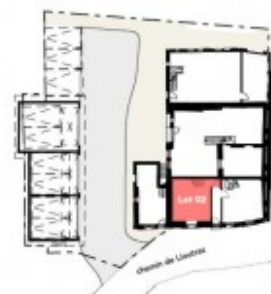
Surface annexe

balcon : 4.8 m²

Localisation - 58, Chemin de Lioutras, 74400 Chamonix-Mont-Blanc



Plan de Masse



Volumétrie



LA FERME DU CHARDONNET



Lot 02

Plan de l'étage

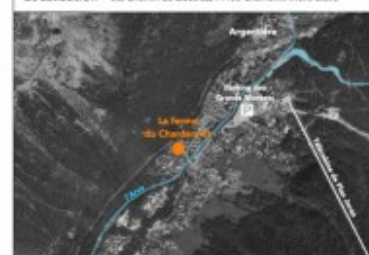
Type : T2

Surface de plancher : 46.8 m²

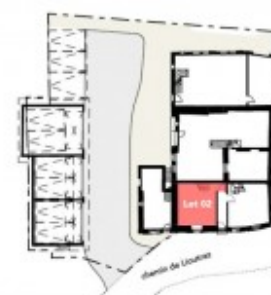
Surface annexe

balcon : 4.8 m²

Localisation - 58, Chemin de Lioutras, 74400 Chamonix-Mont-Blanc



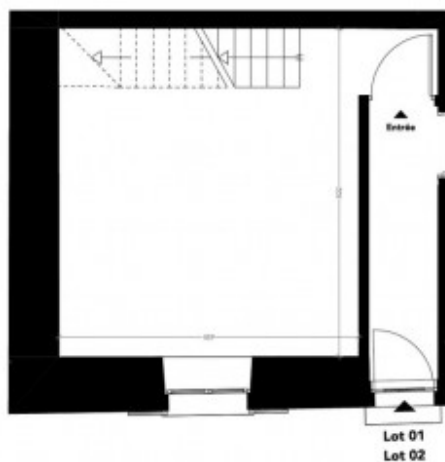
Plan de Masse



Volumétrie



LA FERME DU CHARDONNET



0 1 2 3 m

Lot 02

Plan du Rez-de-Chaussée

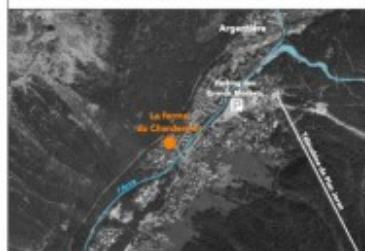
Type : T2

Surface de plancher : 46.8 m²

Surface annexe

balcon : 4.8 m²

Localisation - 56, Chemin de Lioutraz, 74400 Chamonix-Mont-Blanc



Plan de Masse



Volumétrie



LA FERME DU CHARDONNET



0 1 2 3 m

Lot 02

Plan du Rez-de-Chaussée

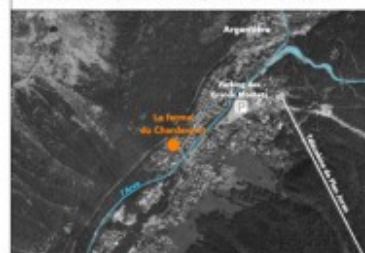
Type : T2

Surface de plancher : 46.8 m²

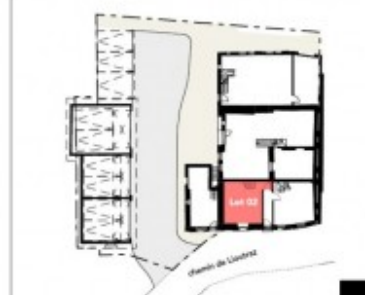
Surface annexe

balcon : 4.8 m²

Localisation - 56, Chemin de Lioutraz, 74400 Chamonix-Mont-Blanc



Plan de Masse



Volumétrie



