



**alpine-property**

Alpine Property SAS au capital de 3 450 € - RCS Thonon les Bains 508 578 556 - siège: 153 chemin du Chargeau, 74110 Morzine, France - Titulaire de la Carte Professionnelle n° CPI 7401 2016 000 017 391 délivrée par la CCI de la Haute Savoie

Tel: +44 (0)208 123 2384

Email: [info@alpine-property.com](mailto:info@alpine-property.com)

Web: [www.alpine-property.com](http://www.alpine-property.com)

# Ferme du Chardonnet, Lot 4

**Argentière, Chamonix & Vallée, Mont Blanc**

**1 110 000 €uros**



## Contact

Contact **Claire Williams** about this property.

**Tel:** +33 6 23 49 38 20

**Email:** [claire@alpine-property.com](mailto:claire@alpine-property.com)

# Key Features

<b>Price</b>	1 110 000 €uros
<b>Status</b>	FOR SALE
<b>Last updated</b>	31/05/2026
<b>Area</b>	Mont Blanc
<b>Location</b>	Chamonix & Vallée
<b>Village</b>	Argentière
<b>Bedrooms</b>	4
<b>Bathrooms</b>	3
<b>Floor area</b>	140.3 m <sup>2</sup>
<b>Heating</b>	Combined system
<b>Nearest skiing</b>	750 m
<b>Nearest shops</b>	1 km
<b>Drainage</b>	Mains drains
<b>Number of lots</b>	5
<b>Procédure en cours</b>	No
<b>Energy efficiency rating</b>	TBC
<b>CO2 emissions</b>	TBC
<b>Agency fees</b>	Paid by the seller

## Property Description

**Don't miss out: one of only two remaining apartments in a small residence of 5 apartments!**

A rare opportunity to create your own bespoke mountain retreat in the heart of Argentière, just steps from the Grands Montets ski lifts and surrounded by world-class hiking and biking trails.

Located in the sought-after Chamonix valley, la Ferme du Chardonnet is just a 10 drive from Chamonix town centre, with both bus and train stops in close proximity.

Apartment 4 is a spacious 140m<sup>2</sup> duplex apartment with patio and balcony within a beautifully renovated small development of five apartments, offering a shell apartment ready to be customised to your needs. Water, electric, waste connections will be in place, giving you complete freedom to design your dream interior.

Proposed layout is:

**Ground floor:** Entrance, guest WC, two double bedrooms, family bathroom with double sink, utility room, third double bedroom (ensuite), private garden patio area.

**Upper floor:** Spacious open plan kitchen/dining/lounge area with pellet burner opening onto a large west-facing balcony, master ensuite bedroom, separate guest WC. This floor overlooks the private internal courtyard on the ground floor.

We can recommend both project managers and interior designers to accompany you in your choice of layout and materials.

Option to purchase a private garage and exterior parking spaces with each apartment for an additional fee.

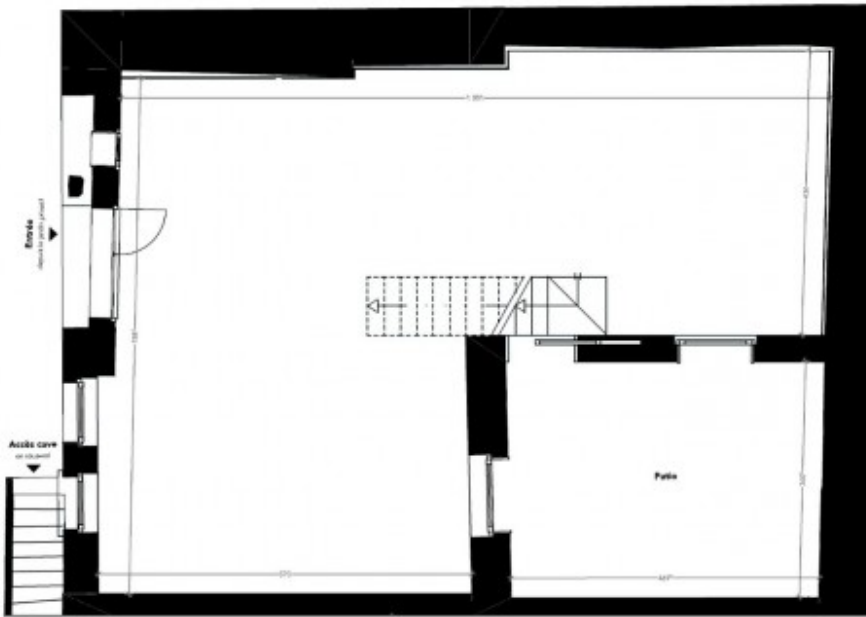
Also available:-

[Ferme du Chardonnet, Lot 5](#)

The property is covered by the copropriété rules.



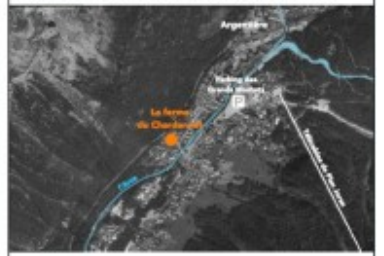
# LA FERME DU CHARDONNET



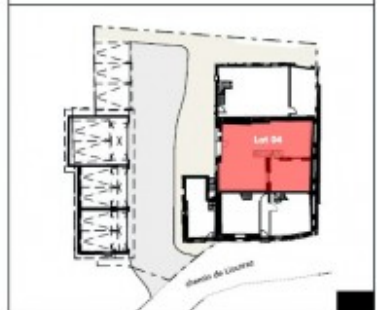
**Lot 04**  
 Plan du Rez-de-Chaussée  
 Type : T5  
 Surface de plancher : 140,3 m<sup>2</sup>  
 Surface annexes : balcon, jardin, patio, cave : 47,2 m<sup>2</sup>



Localisation - 58, Chemin de Livron, 74400 Chamonix-Mont-Blanc



Plan de Masse



Volumétrie



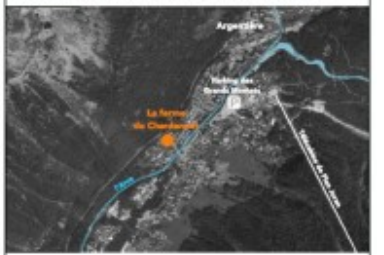
# LA FERME DU CHARDONNET



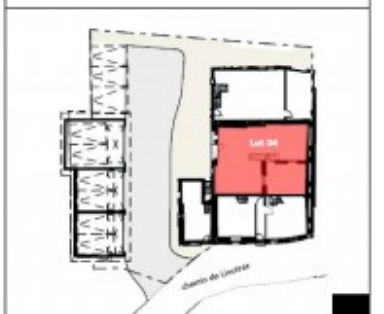
**Lot 04**  
 Plan du Rez-de-Chaussée  
 Type : T5  
 Surface de plancher : 140,3 m<sup>2</sup>  
 Surface annexes : balcon, jardin, patio, cave : 47,2 m<sup>2</sup>



Localisation - 58, Chemin de Livron, 74400 Chamonix-Mont-Blanc



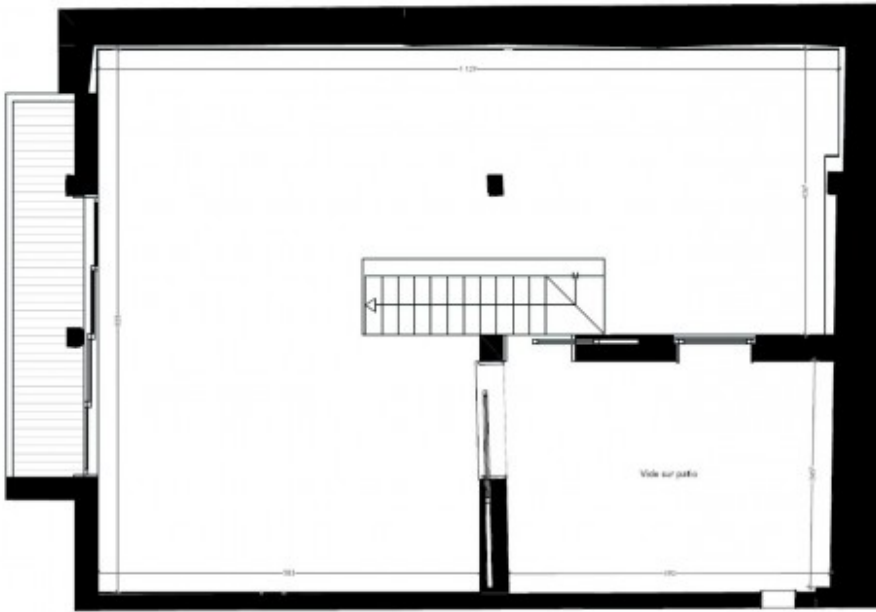
Plan de Masse



Volumétrie

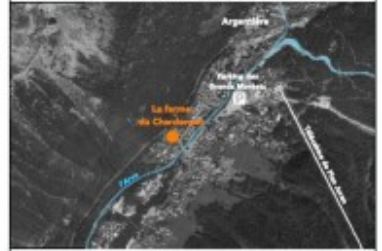


# LA FERME DU CHARDONNET



**Lot 04**  
 Plan de l'étage  
 Type : T5  
 Surface de plancher : 140.3 m<sup>2</sup>  
 Surface annexe  
 balcon, jardin, patio, cave : 67.2 m<sup>2</sup>

Localisation - 58, Chemin de Loutras, 74400 Chamonix-Mont-Blanc



Plan de Masse



Volumétrie

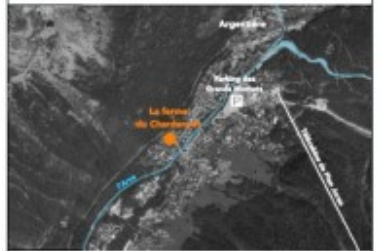


# LA FERME DU CHARDONNET



**Lot 04**  
 Plan de l'étage  
 Type : T5  
 Surface de plancher : 140.3 m<sup>2</sup>  
 Surface annexe  
 balcon, jardin, patio, cave : 67.2 m<sup>2</sup>

Localisation - 58, Chemin de Loutras, 74400 Chamonix-Mont-Blanc



Plan de Masse



Volumétrie



