



alpine-property

Alpine Property SAS au capital de 3 450 € - RCS Thonon les Bains 508 578 556 - siège: 153 chemin du Chargeau, 74110 Morzine, France - Titulaire de la Carte Professionnelle n° CPI 7401 2016 000 017 391 délivrée par la CCI de la Haute Savoie

Tel: +44 (0)208 123 2384

Email: info@alpine-property.com

Web: www.alpine-property.com

Appt. Ipé

Montriond, Morzine, Portes Du Soleil

558 000 €uros



Contact

Contact **Marie-Anne Denicolo** about this property.

Tel: +33 6 08 15 46 54

Email: marieanne@alpine-property.com

Key Features

Price	558 000 Euros
Status	FOR SALE
Last updated	16/06/2025
Area	Portes Du Soleil
Location	Morzine
Village	Montriond
Bedrooms	3
Bathrooms	2
Floor area	69.5 m ²
Heating	Underfloor heating
Ski access	Ski bus
Nearest skiing	1 km
Nearest shops	1 km
Garage	Covered parking
Drainage	Mains drains
Number of lots	9
Procédure en cours	No
Energy efficiency rating	E (310)
CO2 emissions	C (16)
Agency fees	Paid by the seller

Property Description

Must-see apartment located in Montriond, just a few minutes from Morzine. Renovated in 2017, this approximately 70m2 apartment with 3 bedrooms and 2 shower rooms offers a comfortable and convenient living space for a primary residence or for family holidays. Located on the ground floor, the apartment features an open kitchen connected to a living/dining area and comes fully furnished and equipped - you can move in immediately!

Close to amenities and the town centre of Morzine and Montriond, reachable on foot in 10 minutes, this apartment also benefits from easy access to free shuttles. A covered parking space and a ski storage room with boot dryers are also included.

You can also take advantage of a profitable rental income if you decide to rent it out (figures available upon request).

The property is covered by the copropriété rules.

558 000 € TTC

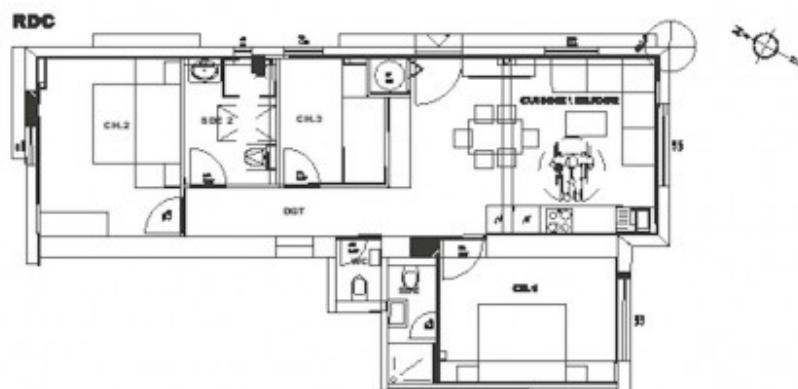


ES Residence



Niveau: RDC

Orientation: Nord Est



APARTMENT A1

CUISINE / SEJOUR	29,72 m2
CH.1	11,52 m2
SDE 1	2,45 m2
CH.2	11,52 m2
SDE 2	5,10 m2
CH.3	6,27 m2
WC	1,73 m2
Surface Totale Logement Carrez	69,54 m2

alpine-property



alpine-property







