



**alpine-property**

Alpine Property SAS au capital de 3 450 € - RCS Thonon les Bains 508 578 556 - siège: 153 chemin du Chargeau, 74110 Morzine, France - Titulaire de la Carte Professionnelle n° CPI 7401 2016 000 017 391 délivrée par la CCI de la Haute Savoie

Tel: +44 (0)208 123 2384

Email: [info@alpine-property.com](mailto:info@alpine-property.com)

Web: [www.alpine-property.com](http://www.alpine-property.com)

# Chalet Vercland

**Samoëns, Samoëns & Vallée, Grand Massif**

**550 000 €uros**



## Contact

Contact about this property.

**Tel:**

**Email:**

# Key Features

<b>Price</b>	550 000 Euros
<b>Status</b>	SOLD
<b>Last updated</b>	11/05/2010
<b>Area</b>	Grand Massif
<b>Location</b>	Samoëns & Vallée
<b>Village</b>	Samoëns
<b>Bedrooms</b>	3
<b>Bathrooms</b>	2
<b>Floor area</b>	108 m <sup>2</sup>
<b>Land area</b>	770 m <sup>2</sup>
<b>Detached</b>	Yes
<b>Heating</b>	Electric radiators
<b>Ski access</b>	Ski bus
<b>Nearest skiing</b>	1 km
<b>Nearest shops</b>	2 km
<b>Garden</b>	Yes
<b>Garage</b>	Single
<b>Energy efficiency rating</b>	TBC
<b>CO2 emissions</b>	TBC
<b>Agency fees</b>	Paid by the seller

## Property Description

These 4 neighbouring plots of land near Vercland are for sale individually as land (203,000 euros) or, as described here with a 3 bedroom chalet built by Denis Barbier. They are situated close to the ski lift at Vercland and just a short distance by ski bus from the popular town of Samoëns.

Each plot has an area of approximately 770m<sup>2</sup> and offers fantastic views over the valley. The ski lift at Vercland is only 1km away and the shops at Samoëns less than 2km.

The individual chalets can be configured to your needs. The proposal found on this website is for a 3 bedroom chalet with a floor area of 108 m<sup>2</sup>. They would be configured as follows:

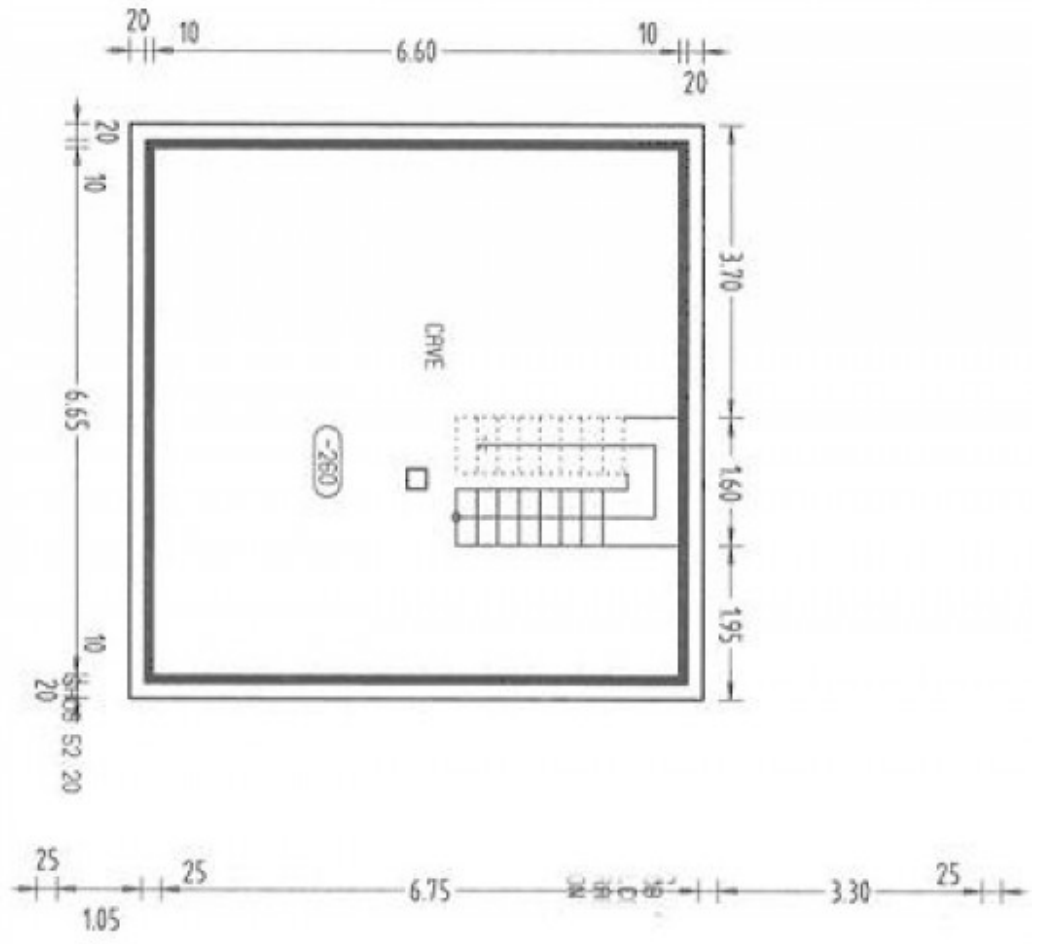
Lower ground floor: cave.

Upper ground floor: single garage, entrance hall, open plan living/dining room with kitchen. Balcony.

First floor: three bedrooms, bathroom/WC.

The quality of these chalets will be superb. Denis has built a number of chalets locally which he will be proud to show you. The quality demonstrated is found rarely in this area. The kitchen will come fully fitted with dish washer, fridge, oven, ceramic cooking plates, extractor, cupboards, worktops, the bathrooms and toilets come with, hand basins, lighting, mirror and a towel drier. The floors will be tiles or wood (depending on location), the heating electric.

# Lower ground floor

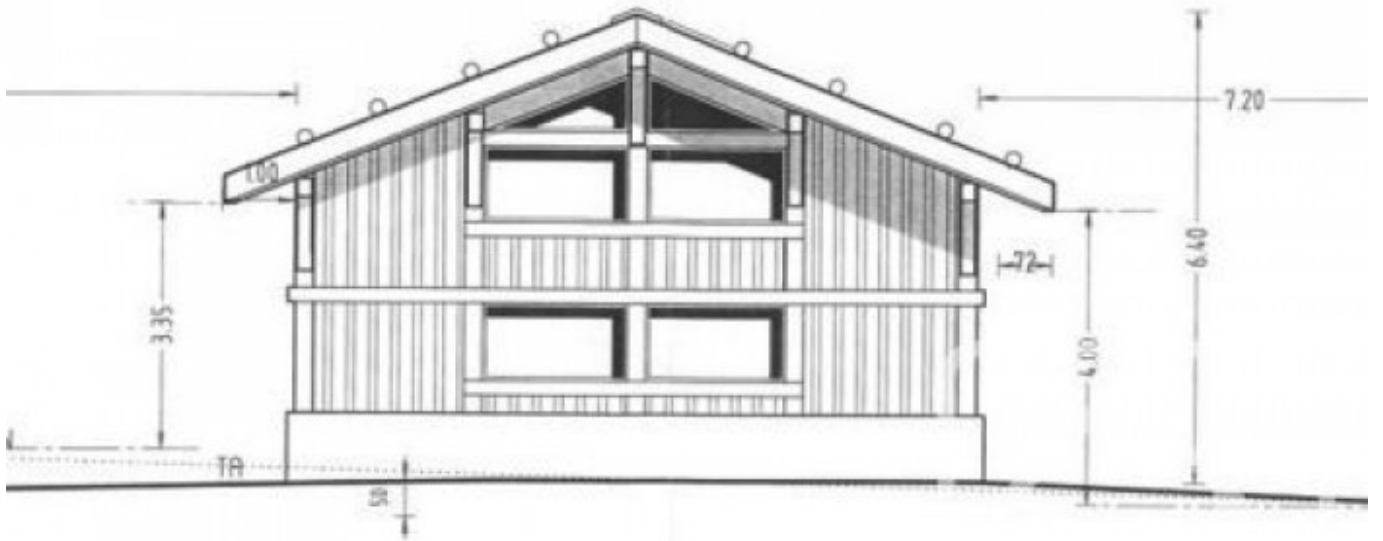


# Ground floor

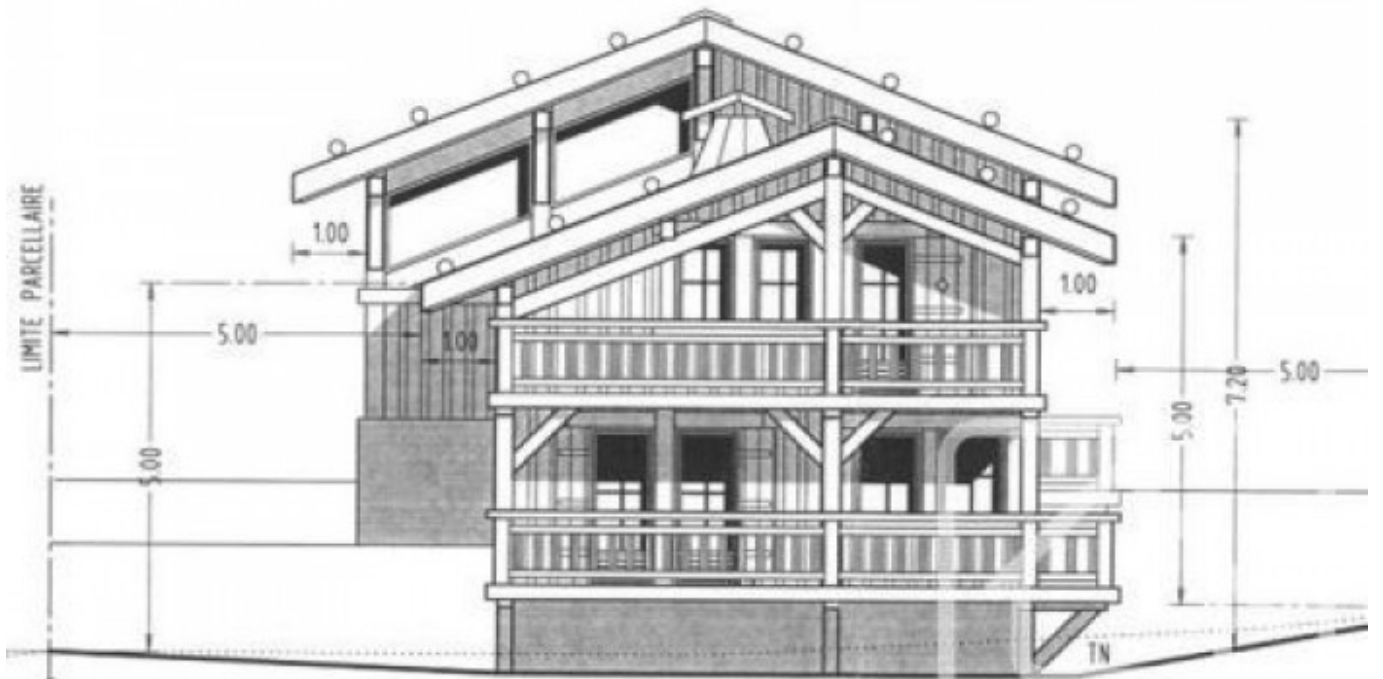


# First floor





**North face of the chalet**



**South face of the chalet**

