



alpine-property

Alpine Property SAS au capital de 3 450 € - RCS Thonon les Bains 508 578 556 - siège: 153 chemin du Chargeau, 74110 Morzine, France - Titulaire de la Carte Professionnelle n° CPI 7401 2016 000 017 391 délivrée par la CCI de la Haute Savoie

Tel: +44 (0)208 123 2384

Email: info@alpine-property.com

Web: www.alpine-property.com

Appt. Yeti 6

Chatel, Châtel & Vallée, Portes Du Soleil

460 000 €uros



Contact

Contact **Ed Ockelton** about this property.

Tel: +33 6 77 83 19 98

Email: ed@alpine-property.com

Key Features

Price	460 000 Euros
Status	FOR SALE
Last updated	16/07/2025
Area	Portes Du Soleil
Location	Châtel & Vallée
Village	Chatel
Bedrooms	3
Bathrooms	2
Floor area	71 m²
Heating	Electric radiators
Nearest skiing	450 m
Nearest shops	400 m
Garage	Single
Drainage	Mains drains
Taxe foncière	1203.00 Euros
Annual charges	1632.00 Euros
Number of lots	39
Procédure en cours	No
Energy efficiency rating	F (498)
CO2 emissions	C (16)
Agency fees	Paid by the seller

Property Description

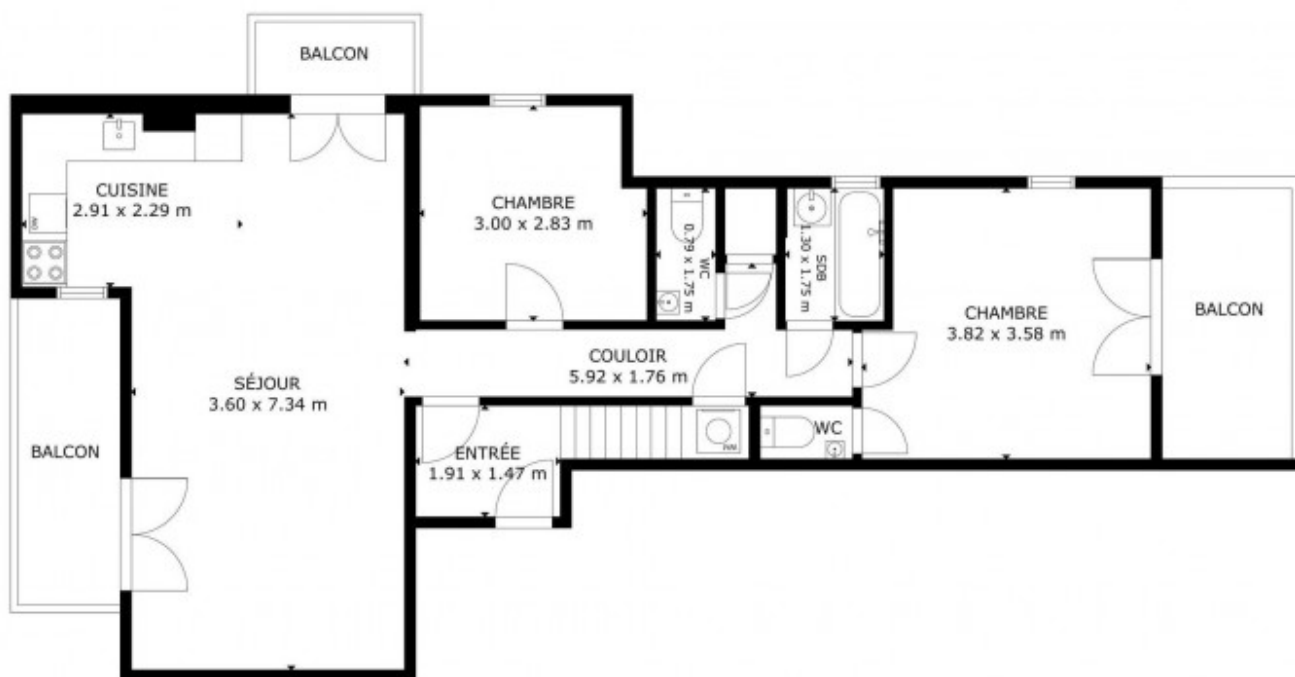
Appt. Yeti 6 is a spacious, duplex apartment located in the desirable “Petit Chatel” area of the village. Built in the early 1980s, the building is well maintained and well located.

On the main floor, the apartment has an entrance hall leading into an open plan living/dining area with separate kitchen. Off the living room are two double bedrooms (one with private toilet & sink), a bathroom and separate WC.

Upstairs is a bedroom under the eaves, an extra sleeping area, a bathroom and a separate WC.

The apartment also benefits from a covered parking space, an external parking space, a cave and a ski rack.

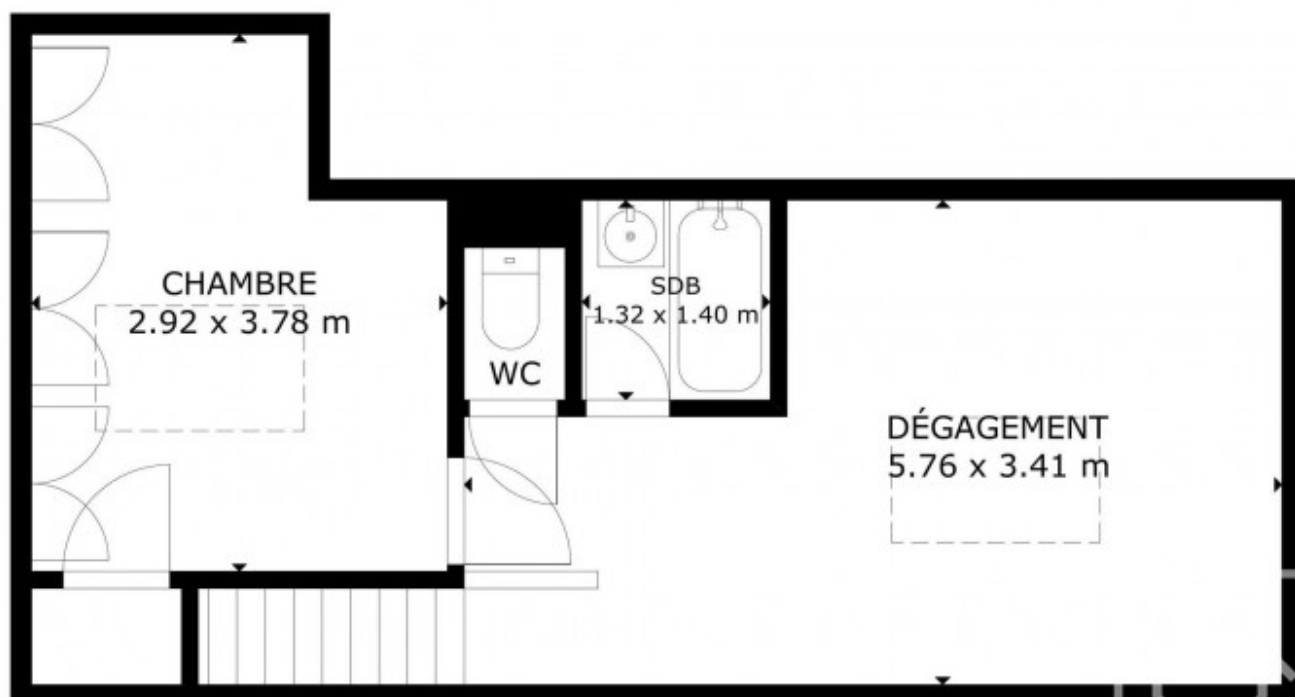
The property is covered by the copropriété rules.



REZ-DE-CHAUSSEE

SIZES AND DIMENSIONS ARE APPROXIMATE, ACTUAL MAY VARY

DoorInsider



1ER ETAGE

SIZES AND DIMENSIONS ARE APPROXIMATE, ACTUAL MAY VARY

DoorInsider











