



**alpine-property**

Alpine Property SAS au capital de 3 450 € - RCS Thonon les Bains 508 578 556 - siège: 153 chemin du Chargeau, 74110 Morzine, France - Titulaire de la Carte Professionnelle n° CPI 7401 2016 000 017 391 délivrée par la CCI de la Haute Savoie

Tel: +44 (0)208 123 2384

Email: [info@alpine-property.com](mailto:info@alpine-property.com)

Web: [www.alpine-property.com](http://www.alpine-property.com)

## Appt. Yeti, 185

**Chatel, Châtel & Vallée, Portes Du Soleil**

**375 000 €uros**



## Contact

Contact **Ed Ockelton** about this property.

**Tel:** +33 6 77 83 19 98

**Email:** [ed@alpine-property.com](mailto:ed@alpine-property.com)

# Key Features

<b>Price</b>	375 000 Euros
<b>Status</b>	FOR SALE
<b>Last updated</b>	06/05/2025
<b>Area</b>	Portes Du Soleil
<b>Location</b>	Châtel & Vallée
<b>Village</b>	Chatel
<b>Bedrooms</b>	3
<b>Bathrooms</b>	1
<b>Floor area</b>	53.2 m²
<b>Heating</b>	Electric radiators
<b>Chimney</b>	Open fire
<b>Nearest skiing</b>	190 m
<b>Nearest shops</b>	170 m
<b>Garage</b>	Single
<b>Drainage</b>	Mains drains
<b>Annual Taxes (est)</b>	1 112 Euros
<b>Taxe foncière</b>	470.00 Euros
<b>Annual charges</b>	1887.00 Euros
<b>Number of lots</b>	24
<b>Procédure en cours</b>	No
<b>Energy efficiency rating</b>	F (401)
<b>CO2 emissions</b>	C (13)
<b>Agency fees</b>	Paid by the seller

## Property Description

Yeti apartment 185 is a spacious (53.24 sq m habitable/62.17 sq m total), well maintained apartment which has had a lot of recent modernisation.

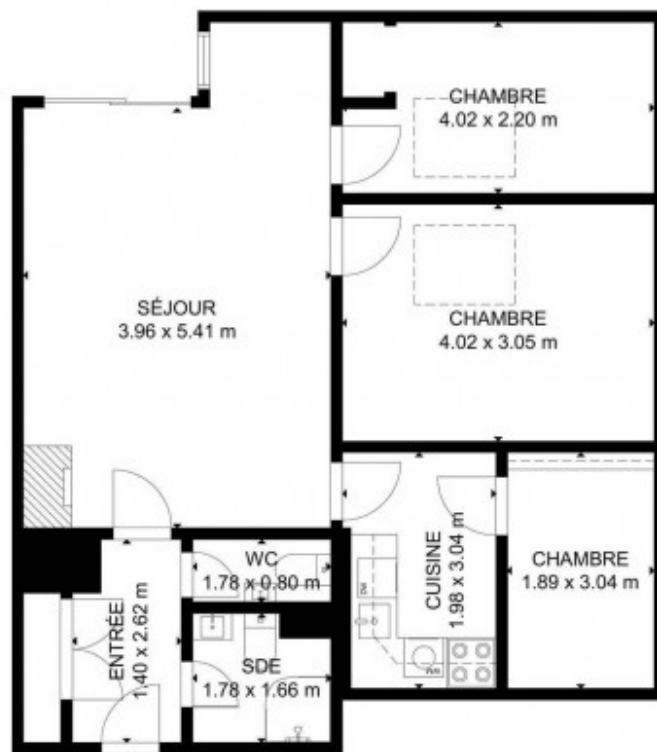
Located in the desirable Petit Chatel area of the village, the apartment benefits from panoramic views and lots of sunshine. It is also a short walk from the chairlift in Petit Chatel, and the ski bus stops close by.

The apartment comprises an open plan living/dining area with fireplace, a modern kitchen, a modern shower room with toilet, and a separate toilet and three separate double bedrooms.

The property also comes with a designated parking space in the underground garage, a large cave and two ski lockers.

Overall, a lovely ready-to-go apartment in an excellent location.

The property is covered by the copropriété rules.



REZ-DE-CHAUSSEE

SIZES AND DIMENSIONS ARE APPROXIMATE, ACTUAL MAY VARY

DoorInsider























