



alpine-property

Alpine Property SAS au capital de 3 450 € - RCS Thonon les Bains 508 578 556 - siège: 153 chemin du Chargeau, 74110 Morzine, France - Titulaire de la Carte Professionnelle n° CPI 7401 2016 000 017 391 délivrée par la CCI de la Haute Savoie

Tel: +44 (0)208 123 2384

Email: info@alpine-property.com

Web: www.alpine-property.com

Appt. Chardons Bleus

Samoëns, Samoëns & Vallée, Grand Massif

310 000 €uros



Contact

Contact **Shane Cunningham** about this property.

Tel: +33 6 70 03 50 92

Email: shane@alpine-property.com

Key Features

Price	310 000 Euros
Status	SOLD
Last updated	24/01/2023
Area	Grand Massif
Location	Samoëns & Vallée
Village	Samoëns
Bedrooms	2
Bathrooms	2
Floor area	45.8 m²
Heating	Electric radiators
Ski access	Ski bus
Nearest skiing	1 km
Nearest shops	50 m
Garage	Covered parking
Drainage	Mains drains
Annual charges	1630.00 Euros
Number of lots	62
Procédure en cours	No
Energy efficiency rating	D (224)
CO2 emissions	B (7)
Agency fees	Paid by the seller

Property Description

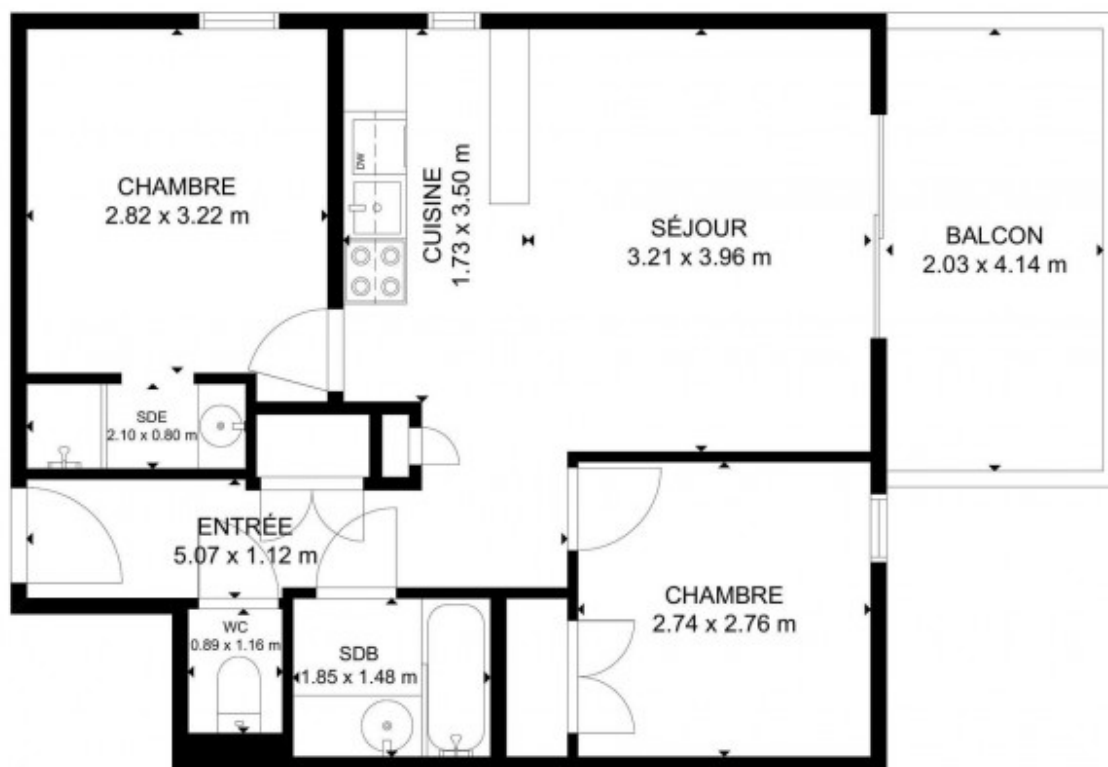
Apartment Chardons Bleus is a delightful 2 bed apartment within Les Ecrins Etoilés Residence. Located off the main market square, with local amenities and the ski bus stop in proximity, the apartment building is set away from the road in peaceful residential gardens.

Built by the constructors MGM, in 2009, the apartment is on the second floor (accessed by elevator or stairs). With a habitable surface of 45.84m2, the apartment consists of an entrance hall, separate WC, family bathroom, a double bedroom currently fitted out with a double bunk bed that sleeps three. An open plan kitchen and living area access onto a balcony with an attractive backdrop of Samoëns' Criou mountain. The principal bedroom has an ensuite shower unit (sink and shower).

The apartment is heated by electric radiators.

The apartment is sold furnished with an underground parking space, a cellar and exclusive use of a ski locker.

The property is covered by the copropriété rules.



DoorInsider













