



alpine-property

Alpine Property SAS au capital de 3 450 € - RCS Thonon les Bains 508 578 556 - siège: 153 chemin du Chargeau, 74110 Morzine, France - Titulaire de la Carte Professionnelle n° CPI 7401 2016 000 017 391 délivrée par la CCI de la Haute Savoie

Tel: +44 (0)208 123 2384

Email: info@alpine-property.com

Web: www.alpine-property.com

Appt. Lavande

Saint Gervais les Bains, St Gervais, Mont Blanc

420 000 €uros



Contact

Contact **Louise Belison** about this property.

Tel: +33 608092655

Email: louise@alpine-property.com

Key Features

Price	420 000 Euros
Status	SOLD
Last updated	01/08/2023
Area	Mont Blanc
Location	St Gervais
Village	Saint Gervais les Bains
Bedrooms	3
Bathrooms	2
Floor area	70 m ²
Heating	Electric radiators
Garage	None
Drainage	Mains drains
Taxe foncière	1128.00 Euros
Annual charges	380.00 Euros
Number of lots	TBC
Procédure en cours	No
Energy efficiency rating	D (226)
CO2 emissions	B (7)
Agency fees	Paid by the seller

Property Description

This apartment is on 3 floors. It is very unusual and very light. Conveniently situated in the centre of St Gervais, it is close to the shops and has south and a north facing views (double aspect).

The entrance leads into a good sized living area with fully equipped kitchen, dining area, lounge and south facing balcony. There is also a toilet and laundry room on this floor.

On the 1st floor, there are 2 bedrooms, one south facing with a small balcony and the other north facing with a larger balcony enjoying fantastic views across a quiet garden. On the same floor there is a family bathroom and separate toilet.

On the top floor, there is a big bedroom with a velux and a bathroom with a walk-in shower.

This apartment is sold fully furnished - nothing to do but bring your suitcases!

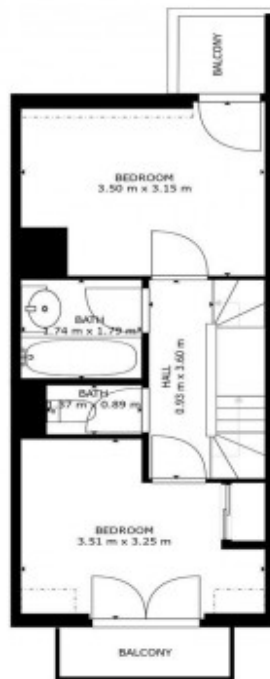
The property is covered by the copropriété rules.



FLOOR 1

SIZES AND DIMENSIONS ARE APPROXIMATE. ACTUAL MAY VARY.

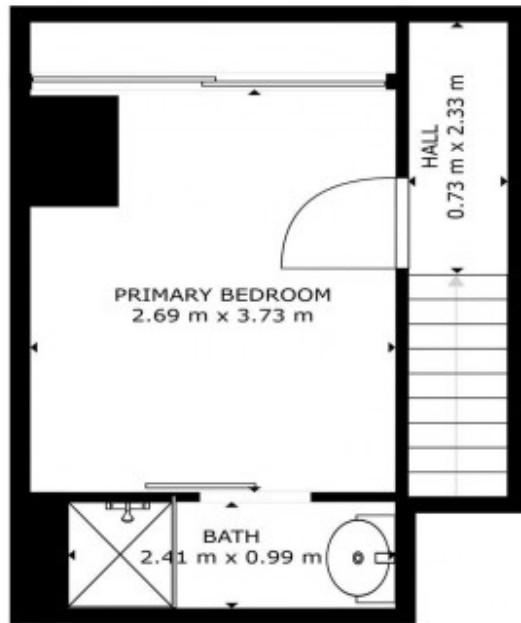
DoorInsider Partnering with Matterport



FLOOR 2

SIZES AND DIMENSIONS ARE APPROXIMATE. ACTUAL MAY VARY.

DoorInsider Partnering with Matterport



FLOOR 2

SIZES AND DIMENSIONS ARE APPROXIMATE. ACTUAL MAY VARY.

DoorInsider Partnering with
Matterport













