



alpine-property

Alpine Property SAS au capital de 3 450 € - RCS Thonon les Bains 508 578 556 - siège: 153 chemin du Chargeau, 74110 Morzine, France - Titulaire de la Carte Professionnelle n° CPI 7401 2016 000 017 391 délivrée par la CCI de la Haute Savoie

Tel: +44 (0)208 123 2384

Email: info@alpine-property.com

Web: www.alpine-property.com

Les Chalets de Mejaille, 1

Chatel, Châtel & Vallée, Portes Du Soleil

1 490 000 €uros



Contact

Contact **Ed Ockelton** about this property.

Tel: +33 6 77 83 19 98

Email: ed@alpine-property.com

Key Features

Price	1 490 000 €uros
Status	SOLD
Last updated	30/01/2023
Area	Portes Du Soleil
Location	Châtel & Vallée
Village	Chatel
Bedrooms	5
Bathrooms	5
Floor area	176 m ²
Land area	500 m ²
Detached	Yes
Heating	Underfloor heating
Ski access	Ski bus
Nearest skiing	600 m
Nearest shops	500 m
Garden	Yes
Garage	Double
Drainage	Mains drains
Energy efficiency rating	TBC
CO2 emissions	TBC
Agency fees	Paid by the seller

Property Description

Les Chalets de La Mejaille 1 is a project of two high quality chalets being built by one of the regions premier builders.

The chalets feature state of the art heat pump heating systems, fully fitted kitchens with granite work surfaces, and fully finished bathrooms with choice of tiles and finishing.

Chalet 1 has 176 sq m of usable space (172.45 sq m habitable) and comprises;

Lower ground floor; Double garage with electric door, boiler room, main entrance with boot room, spacious double bedroom with built in cupboard, spacious shower room and separate WC, stairs leading to...

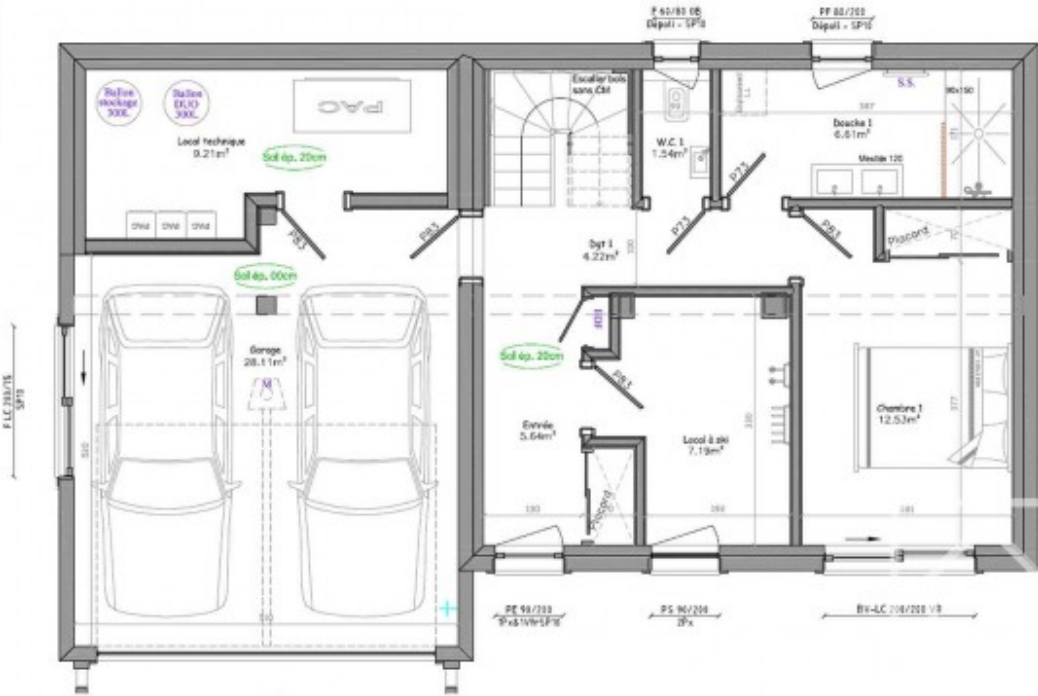
Ground floor; An impressive open plan living/dining/kitchen area of approx 50 sq m, large double bedroom with ensuite shower room and separate WC, spacious terrace, stairs leading to..

First floor; A spacious master bedroom (22 sq m) with ensuite shower room (9 sq m) and balcony, 2 double bedrooms both with balcony and built in cupboards, large family bathroom, shower room and separate WC.

The chalet is located in the popular "Vonnès" area of the village, a short distance to the lake, walking distance to the two chairlifts at the far side of the lake, and easy walking distance to the centre of Chatel.

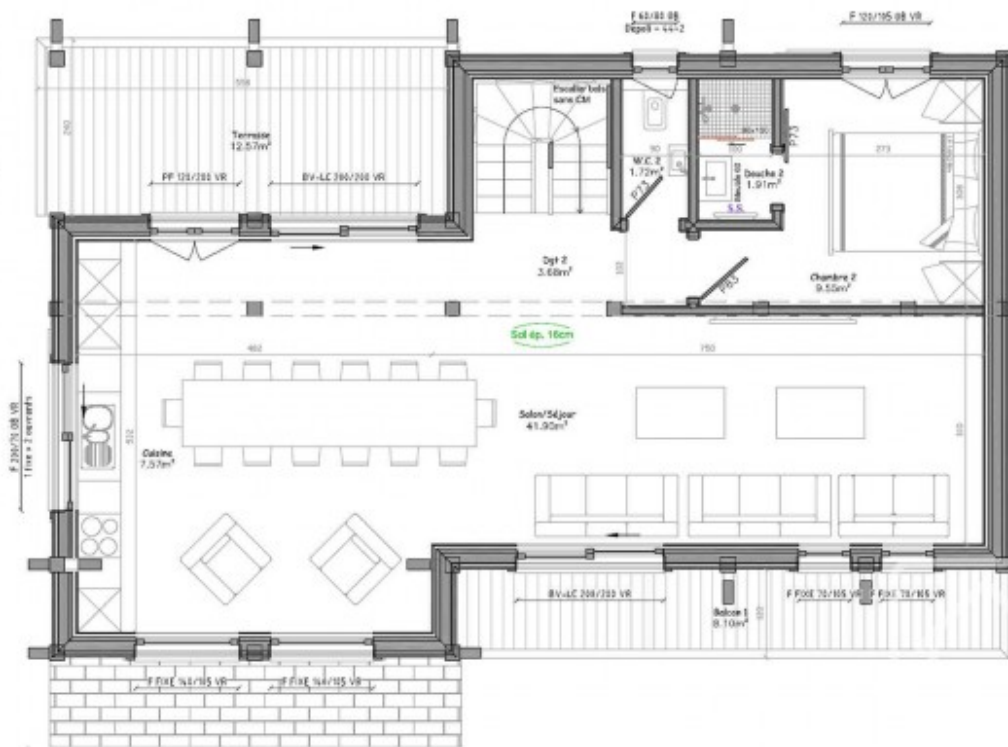
Rez de jardin

TABLEAU DES SURFACES		
Rez de jardin		
Acrotère	Utilité	Plancher
38,18 m ²	38,18 m ²	40,80 m ²
1er Etage		
Acrotère	Utilité	Plancher
90,79 m ²	66,73 m ²	66,43 m ²
2ème Etage		
Acrotère	Utilité	Plancher
87,88 m ²	71,15 m ²	73,90 m ²
TOTAL		
Acrotère	Utilité	Plancher
172,43 m ²	175,95 m ²	190,13 m ²



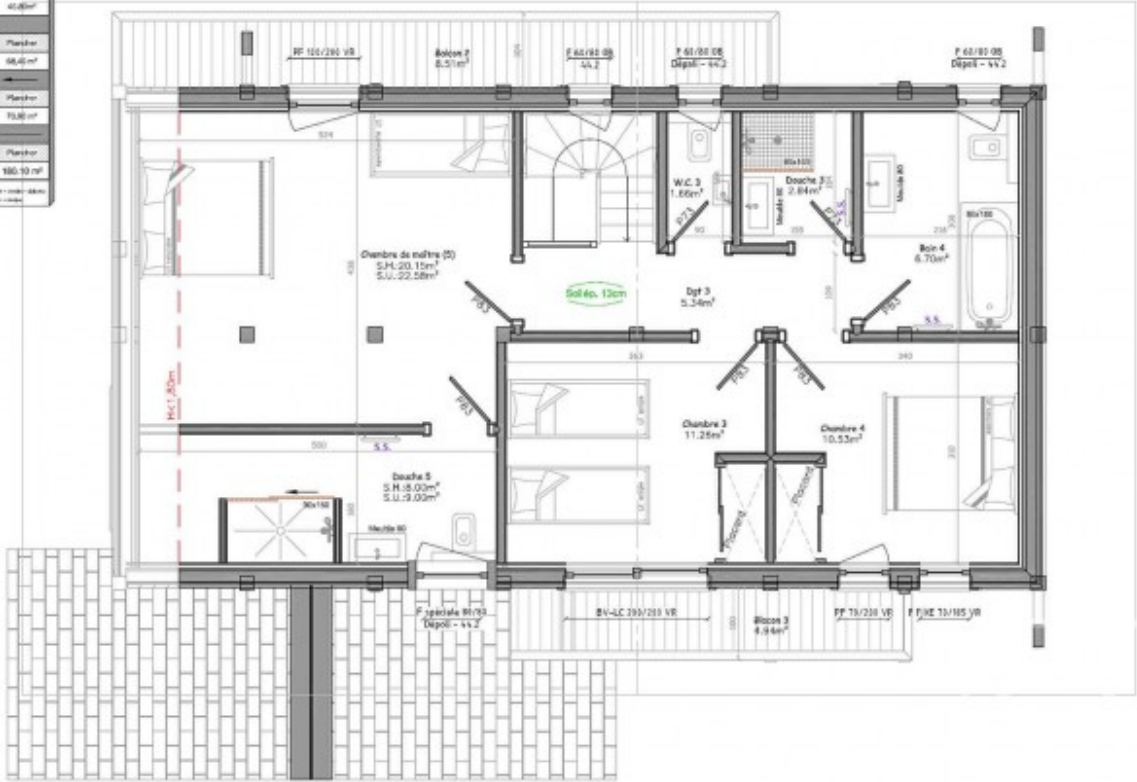
1er Etage

TABLEAU DES SURFACES		
Roz de jardin		
Rebords	Uls	Plancher
38,78 m ²	38,72 m ²	42,88 m ²
1er Etage		
Rebords	Uls	Plancher
80,73 m ²	80,72 m ²	88,42 m ²
2ème Etage		
Rebords	Uls	Plancher
87,88 m ²	71,73 m ²	70,82 m ²
TOTAL		
Rebords	Uls	Plancher
172,45 m ²	179,85 m ²	180,12 m ²

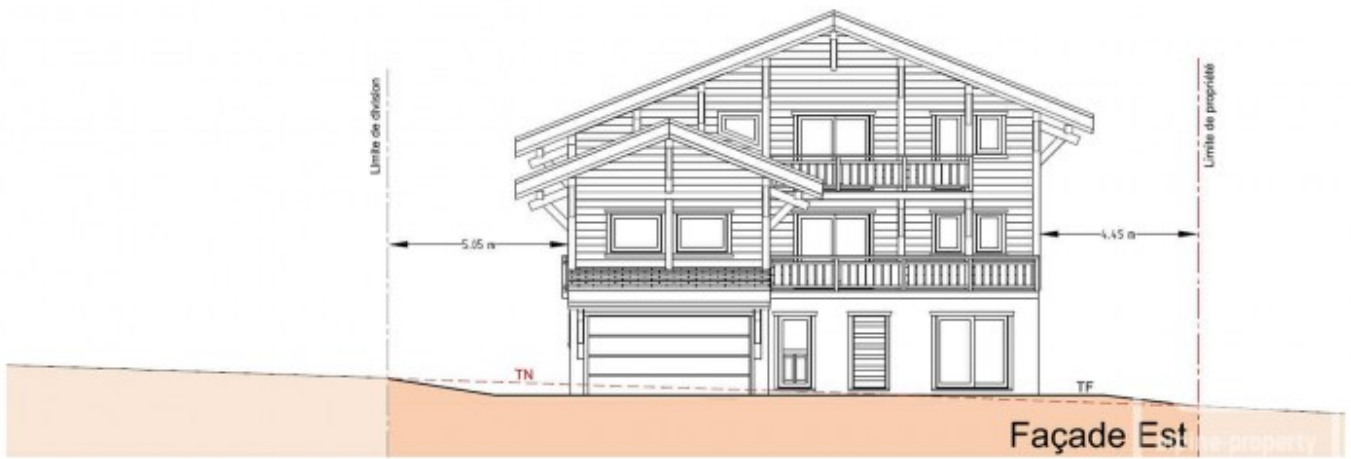
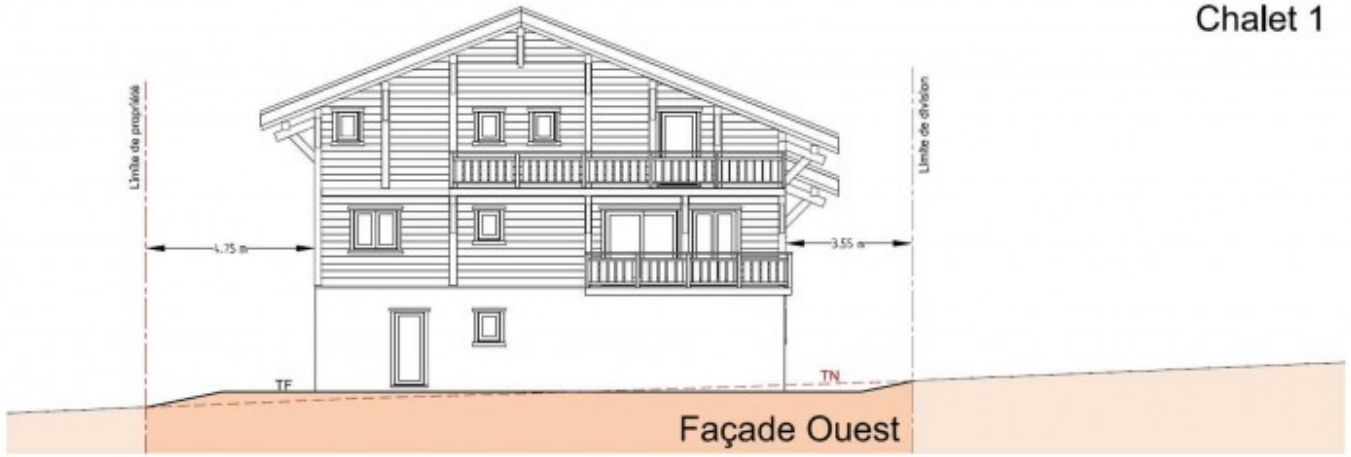


2ème Etage

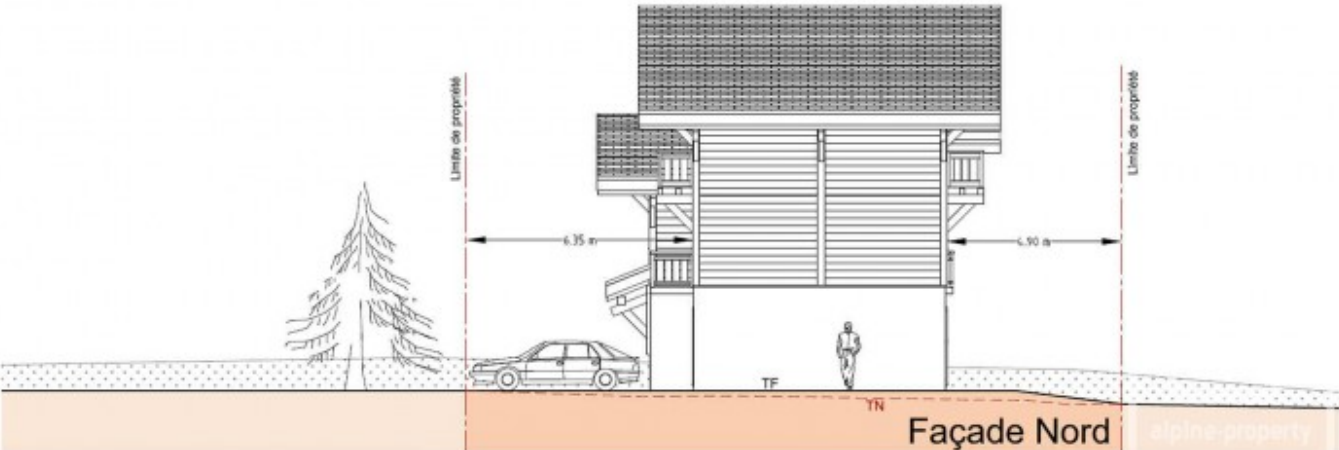
Nœud de jardin		
Acrotère	Utile	Plancher
36,18 m ²	36,18 m ²	47,49 m ²
1er Etage		
Acrotère	Utile	Plancher
66,79 m ²	66,79 m ²	66,40 m ²
2ème Etage		
Acrotère	Utile	Plancher
67,05 m ²	71,15 m ²	73,30 m ²
TOTAL		
Acrotère	Utile	Plancher
172,45 m ²	175,85 m ²	186,19 m ²



Chalet 1



Chalet 1



Coupe A-A

Chalet 1







