



alpine-property

Alpine Property SAS au capital de 3 450 € - RCS Thonon les Bains 508 578 556 - siège: 153 chemin du Chargeau, 74110 Morzine, France - Titulaire de la Carte Professionnelle n° CPI 7401 2016 000 017 391 délivrée par la CCI de la Haute Savoie

Tel: +44 (0)208 123 2384

Email: info@alpine-property.com

Web: www.alpine-property.com

Chalet des Parchys

Bellevaux, Vallée Du Brevon, Alpes du Léman

295 000 €uros



Contact

Contact **Anna Allen** about this property.

Tel: +33 6 12 79 07 63

Email: anna@alpine-property.com

Key Features

Price	295 000 Euros
Status	SOLD
Last updated	04/08/2020
Area	Alpes du Léman
Location	Vallée Du Brevon
Village	Bellevaux
Bedrooms	4
Bathrooms	1
Floor area	116 m²
Land area	900 m²
Detached	Yes
Heating	Electric radiators
Chimney	Enclosed fire
Nearest skiing	1 km
Nearest shops	3.5 km
Garden	Yes
Garage	Covered parking
Drainage	Mains drains
Energy efficiency rating	G (439)
CO2 emissions	C (27)
Agency fees	Paid by the seller

Property Description

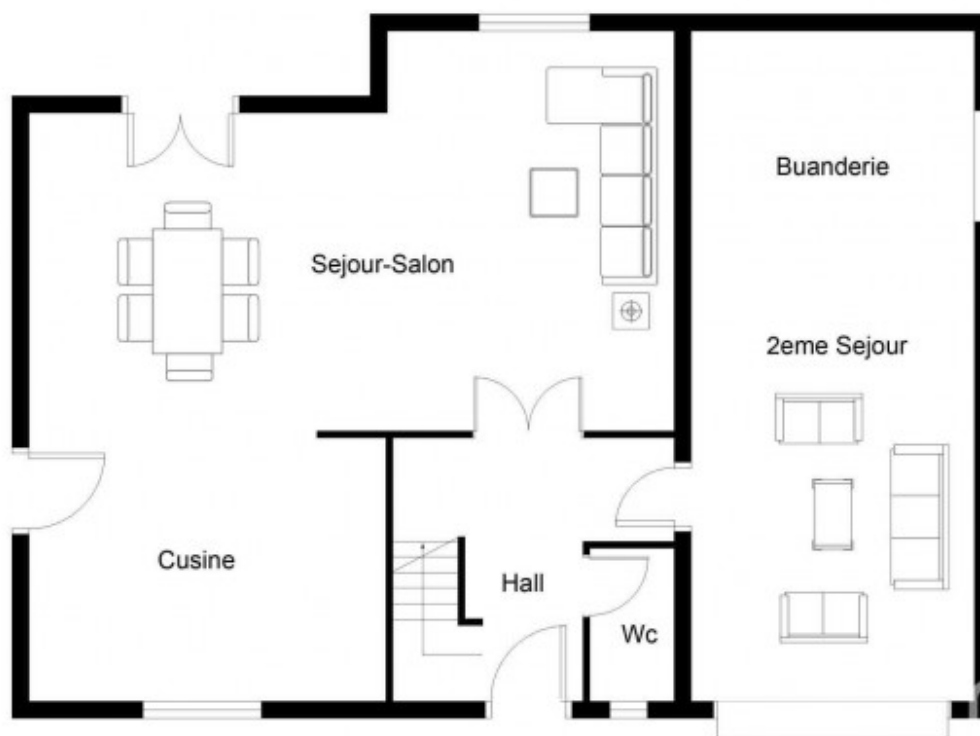
Built in 2000, this bright airy chalet is located on flat land in a gloriously sunny spot with mountain views from every side. This property is priced to reflect that it needs some refreshing.

On the ground floor, the front door opens to a small hall with separate WC, glass doors lead into the large open plan living room/kitchen/diner with a central fireplace. Two French windows open to the garden. Also on this level, the original garage has been turned into a second sitting room with a laundry/storage area behind. On the first floor there 3 double bedrooms, a bathroom and a 4th converted room over the garage.

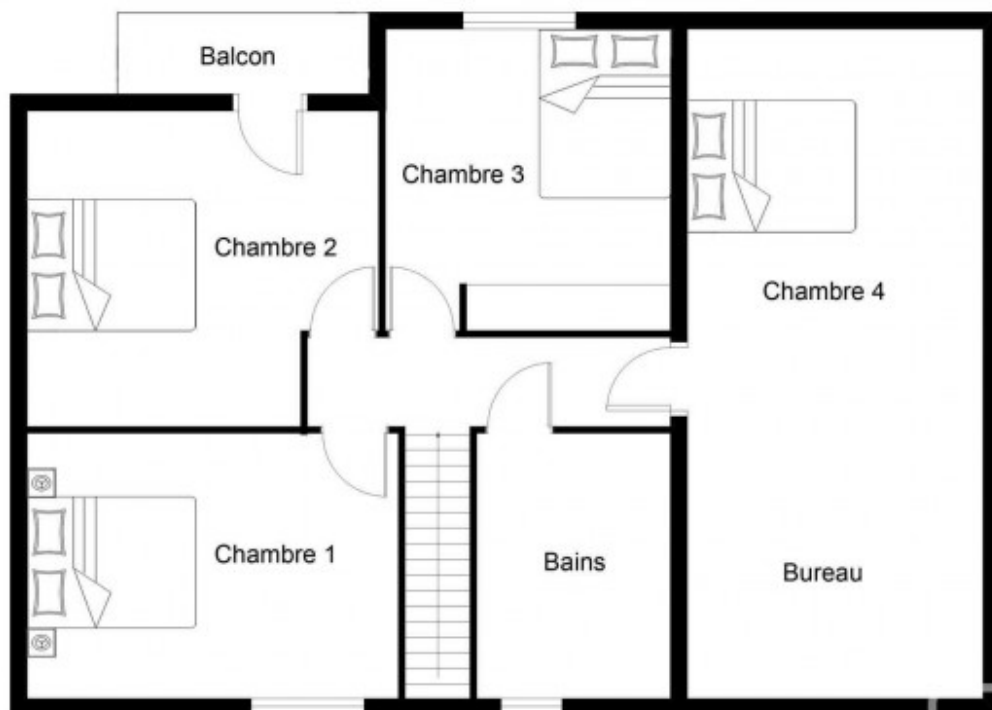
The level garden of 900m2 surrounds the property with views towards Hirementaz, Nifflon and the Roc d'Enfer.

The property is heated by electric radiators and is connected to mains drains. Outside there is a substantial car port, the land surrounds the chalet, part of the garden is fenced making it ideal for children and/or animals. The access road services a small 'lotissement' so passing traffic would mainly be neighbours.

The nearest skiing is the popular resort of Hirmentaz less than 3mins drive, with the Roc d'Enfer circuit 10mins away and Sommand/Pras de Lys only 25mins drive. Les Portes du Soleil is 45mins away. Geneva centre is 35mins, the airport 50mins, Annecy 55mins and Thonon-les-Bains and the lakeside only 25mins. The thriving villages of Lullin, Bellevaux (3km) and Habere-Poche are close, with all the commerce you need and there are plenty of schools nearby.



REZ-DE-CHAUSSÉE



PREMIER ÉTAGE























