



alpine-property

Alpine Property SAS au capital de 3 450 € - RCS Thonon les Bains 508 578 556 - siège: 153 chemin du Chargeau, 74110 Morzine, France - Titulaire de la Carte Professionnelle n° CPI 7401 2016 000 017 391 délivrée par la CCI de la Haute Savoie

Tel: +44 (0)208 123 2384

Email: info@alpine-property.com

Web: www.alpine-property.com

Chalet de la Scierie

Bogève, Vallée Verte, Alpes du Léman

243 000 €uros



Contact

Contact **Anna Allen** about this property.

Tel: +33 6 12 79 07 63

Email: anna@alpine-property.com

Key Features

Price	243 000 Euros
Status	SOLD
Last updated	10/02/2020
Area	Alpes du Léman
Location	Vallée Verte
Village	Bogève
Bedrooms	3
Bathrooms	1
Floor area	64 m²
Land area	1080 m²
Detached	Yes
Heating	Electric radiators
Chimney	Open fire
Nearest skiing	6 km
Nearest shops	9 km
Garden	Yes
Drainage	Mains drains
Energy efficiency rating	G (769)
CO2 emissions	D (48)
Agency fees	Paid by the seller

Property Description

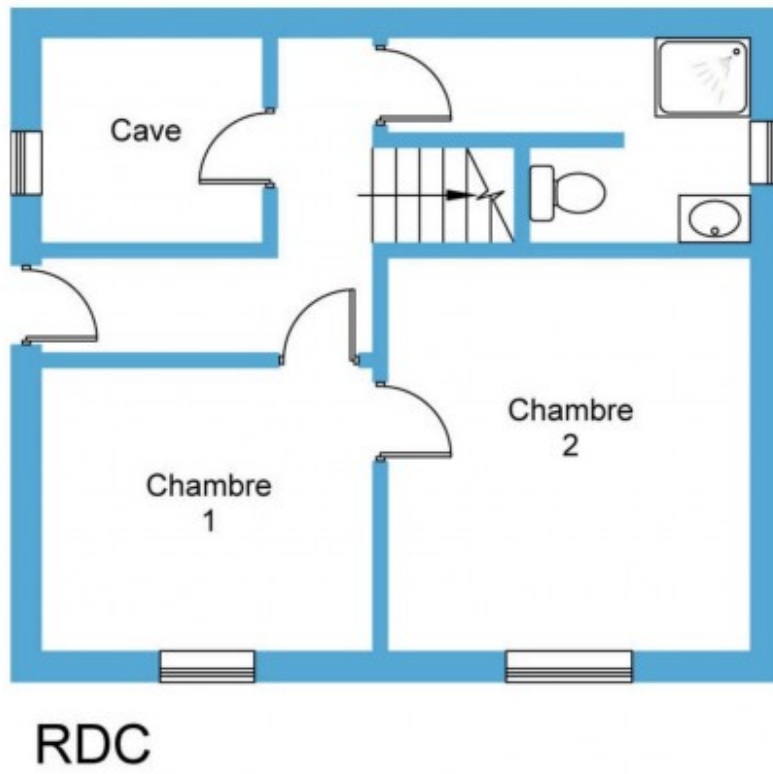
Set in a mature garden facing South West across the valley, this little chalet would make a wonderful holiday home or main residence. It is situated in a small hamlet above the village of Bogève and has an open view out towards the Voiron mountain ridge.

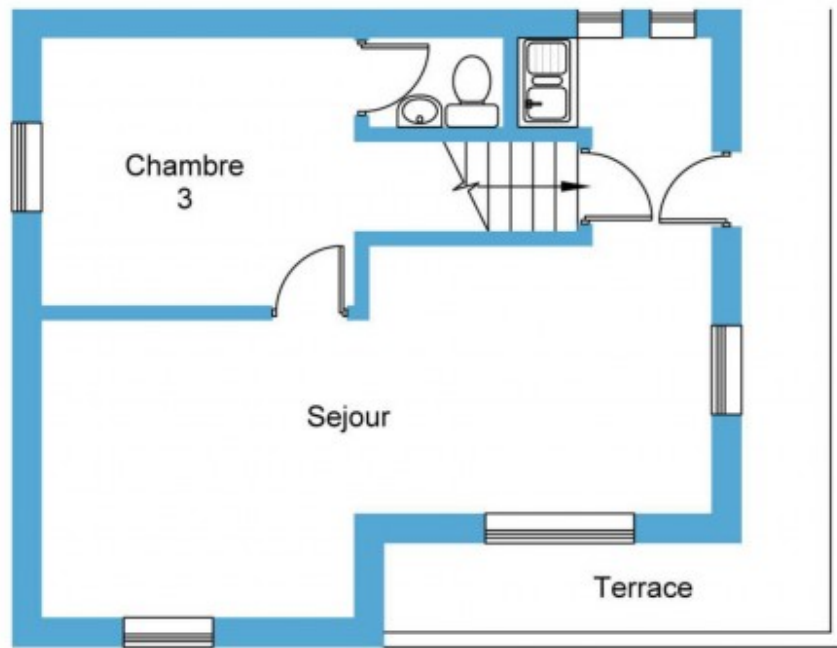
The front door leads into a hallway from which you can access the first bedroom, this leads into the second bedroom which has a French window to the garden. Also on this floor a shower room with WC and small cave which houses a fuel tank and the hot water cylinder. Stairs lead to the second floor with a galley kitchen, an open plan dining and living area and a double bedroom with en-suite WC. French windows and a kitchen door open onto the balcony which has external stairs to the garden.

The chalet is habitable, although ideally needs modernising. Insulating and double-glazed windows would be the first consideration, there is plenty of scope for extension. The current heating system is a combination of electric radiators and an oil fueled poêle on each floor.

The land surrounds the property and includes a large garden shed and a bubbling little stream. There are many choices for al-fresco dining, just follow the sunshine.

At 1100m altitude the chalet is less than 5mins drive to the family ski area of le massif des Brasses, 15mins to Hirmentaz/Les Haberes and larger ski areas such as Flaine and Portes du Soleil would be 45mins drive. The village of Bogève is only 3mins away, the larger towns of Boège and Viuz en Sallaz with their shops, schools and colleges are only 10mins drive.





1er Étage























