



alpine-property

Alpine Property SAS au capital de 3 450 € - RCS Thonon les Bains 508 578 556 - siège: 153 chemin du Chargeau, 74110 Morzine, France - Titulaire de la Carte Professionnelle n° CPI 7401 2016 000 017 391 délivrée par la CCI de la Haute Savoie

Tel: +44 (0)208 123 2384

Email: info@alpine-property.com

Web: www.alpine-property.com

Chalet Les Oies

Chatel, Châtel & Vallée, Portes Du Soleil

599 000 €uros



Contact

Contact **Ed Ockelton** about this property.

Tel: +33 6 77 83 19 98

Email: ed@alpine-property.com

Key Features

Price	599 000 Euros
Status	SOLD
Last updated	09/09/2021
Area	Portes Du Soleil
Location	Châtel & Vallée
Village	Chatel
Bedrooms	5
Bathrooms	2
Floor area	123 m²
Land area	334 m²
Detached	Yes
Heating	Underfloor heating
Ski access	Ski bus
Nearest skiing	1 km
Nearest shops	1 km
Garage	Single
Drainage	Mains drains
Taxe foncière	1151.00 Euros
Energy efficiency rating	D (168)
CO2 emissions	D (41)
Agency fees	Paid by the seller

Property Description

Chalet Les Oies is a modern chalet located in a sunny location less than a km from the centre of Chatel.

Built in 2000, the property is in good order throughout and benefits from a separate two bedroom apartment on the lower ground floor.

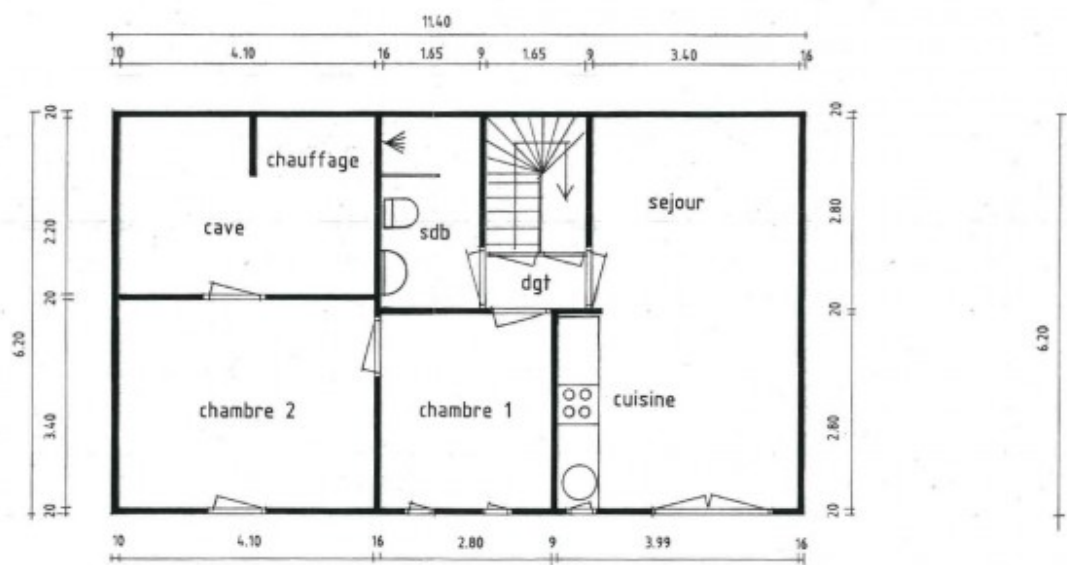
On the main floor is a garage with access into the main house. The spacious open plan living/kitchen/dining area has doors out onto the sunny balcony with uninterrupted views over open fields. In the entrance is a cloakroom with heating pipes for drying boots etc, and a separate WC. There is also underfloor heating throughout on this level.

Upstairs are three double bedrooms, two with balconies, a useful extra sleeping area under the eaves and a family bathroom.

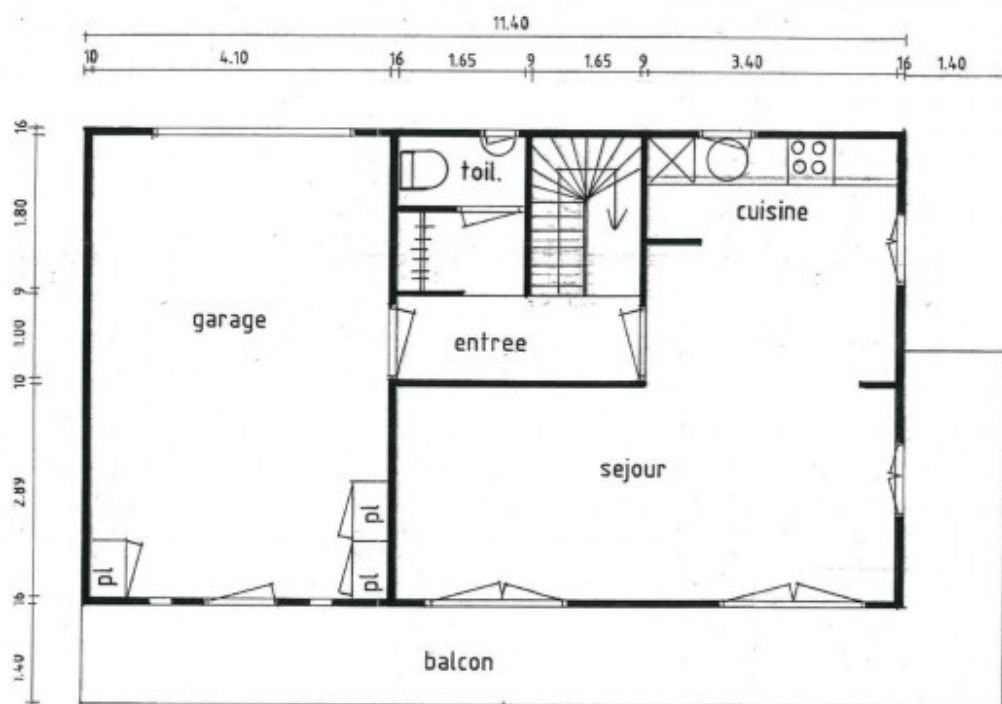
An internal staircase connects the main chalet with the separate two bedroom apartment on the lower ground floor. On this level is a living/dining/kitchen area (kitchen replace in 2012) with patio doors onto the terrace, a bathroom with Italian style shower, and two interconnecting bedrooms (one with access to the terrace).

Off the main bedroom is access to a useful storage area and the boiler room. This whole level also benefits from underfloor heating.

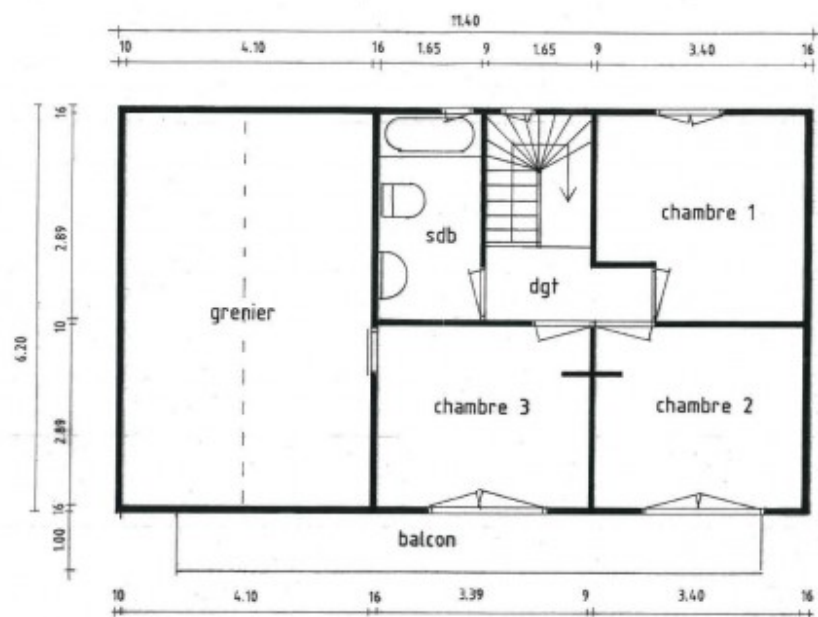
The house has approximately 150 sq m of usable space (123 sq m habitable), and a modern oil fired central heating system.



PLAN REZ DE CHAUSSEE INFERIEUR



PLAN REZ DE CHAUSSEE



PLAN REZ DE CHAUSSEE + 1













