



**alpine-property**

Alpine Property SAS au capital de 3 450 € - RCS Thonon les Bains 508 578 556 - siège: 153 chemin du Chargeau, 74110 Morzine, France - Titulaire de la Carte Professionnelle n° CPI 7401 2016 000 017 391 délivrée par la CCI de la Haute Savoie

Tel: +44 (0)208 123 2384

Email: [info@alpine-property.com](mailto:info@alpine-property.com)

Web: [www.alpine-property.com](http://www.alpine-property.com)

# Chalet L'Eterlou

**Combloux, Combloux, Mont Blanc**

**995 000 €uros**



## Contact

Contact **Val Ainaud** about this property.

**Tel:** +33 6 14 84 61 80

**Email:** [val@alpine-property.com](mailto:val@alpine-property.com)

# Key Features

<b>Price</b>	995 000 Euros
<b>Status</b>	SOLD
<b>Last updated</b>	22/02/2017
<b>Area</b>	Mont Blanc
<b>Location</b>	Combloux
<b>Village</b>	Combloux
<b>Bedrooms</b>	4
<b>Bathrooms</b>	3
<b>Floor area</b>	145 m²
<b>Land area</b>	1033 m²
<b>Detached</b>	Yes
<b>Heating</b>	Electric radiators
<b>Chimney</b>	Open fire
<b>Nearest skiing</b>	3.5 km
<b>Nearest shops</b>	1 km
<b>Garden</b>	Yes
<b>Drainage</b>	Mains drains
<b>Energy efficiency rating</b>	G (577)
<b>CO2 emissions</b>	D (32)
<b>Agency fees</b>	Paid by the seller

## Property Description

Chalet L'Eterlou is very typical of an alpine-style construction and offers a warm and welcoming atmosphere from the moment you step through the door. It is situated just 10 minutes walk from the centre of Combloux village, in a year-round community which comes alive with the sound of cow bells in the summer and transforms into a ski resort in the winter. Here you will discover the Combloux ski domain which is linked with Megève, via Le Jaillet and La Giettaz.

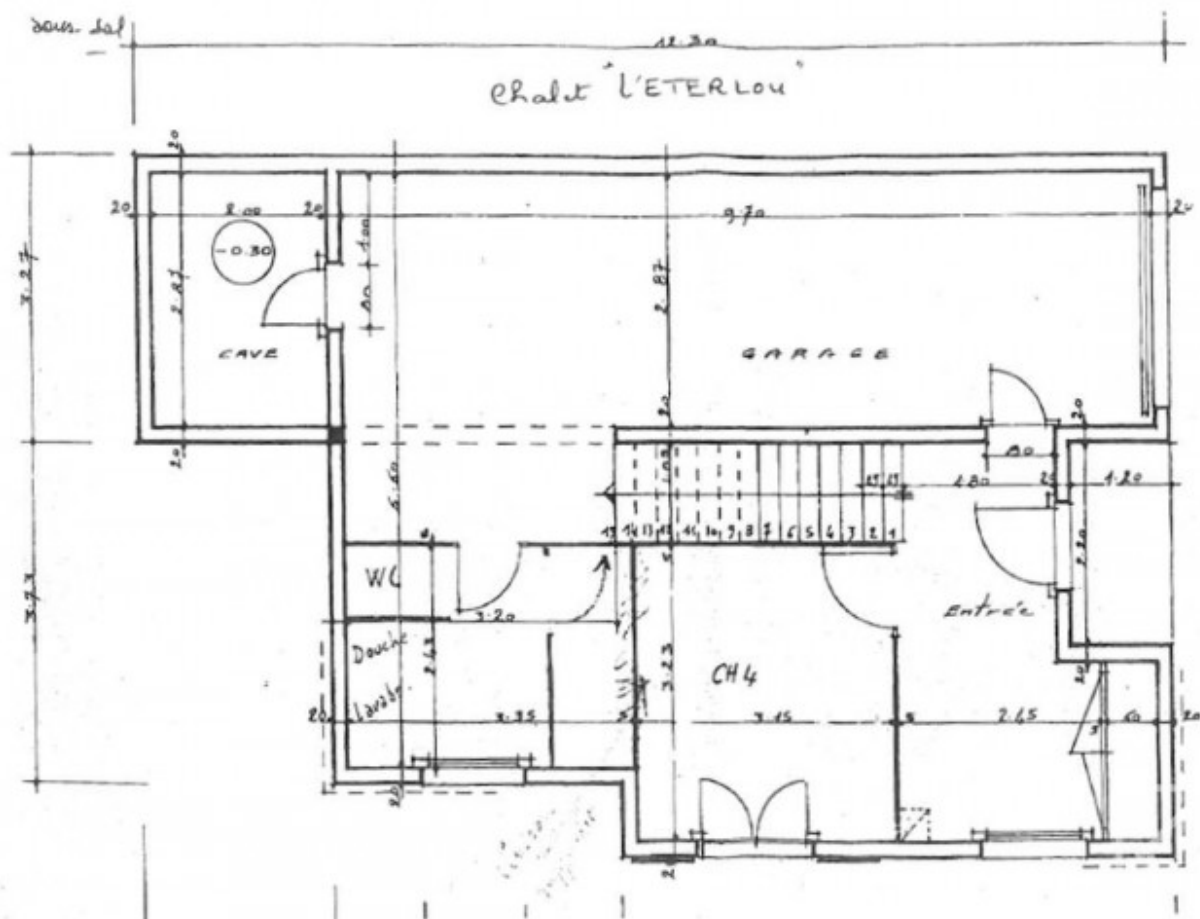
The chalet is on 3 levels as follows :

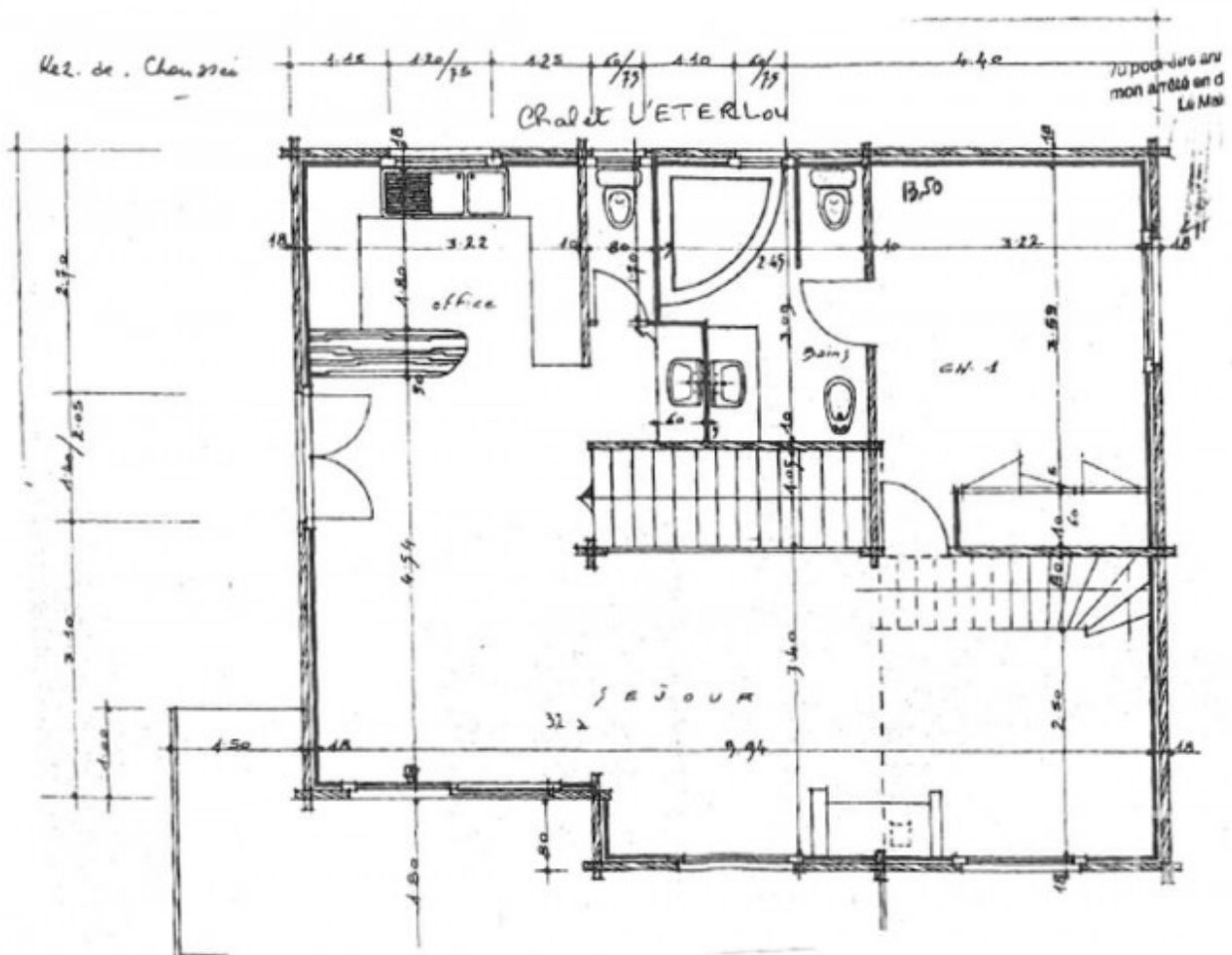
Ground floor : garage with storage, office, cellar room. Accommodation on this level comprises a bedroom with ensuite facilities and with doors opening directly onto a terrace with views of Mont Blanc.

First floor : on this level, the use of wood cladding, exposed beams and the feature stone fireplace create an authentic alpine ambiance. The spacious living room has a lounge area, dining area and open plan kitchen. The kitchen end of the living space opens onto a second terrace and doors from the dining area open onto the balcony. Also on this level is a double bedroom with ensuite bathroom.

Top floor : large mezzanine, 2 further bedrooms and a separate shower room.

A charming chalet with plenty of character!





Etage

