



alpine-property

Alpine Property SAS au capital de 3 450 € - RCS Thonon les Bains 508 578 556 - siège: 153 chemin du Chargeau, 74110 Morzine, France - Titulaire de la Carte Professionnelle n° CPI 7401 2016 000 017 391 délivrée par la CCI de la Haute Savoie

Tel: +44 (0)208 123 2384

Email: info@alpine-property.com

Web: www.alpine-property.com

Chalet Maya

Saint Gervais les Bains, St Gervais, Mont Blanc

745 000 €uros



Contact

Contact **Jean-Christophe Skiera** about this property.

Tel: +33 6 08 46 86 86

Email: jc@alpine-property.com

Key Features

Price	745 000 Euros
Status	SOLD
Last updated	15/08/2016
Area	Mont Blanc
Location	St Gervais
Village	Saint Gervais les Bains
Bedrooms	6
Bathrooms	3
Floor area	201 m²
Land area	1039 m²
Detached	Yes
Heating	Oil fired central heating
Chimney	Enclosed fire
Ski access	Ski bus
Nearest skiing	3.5 km
Nearest shops	3.5 km
Garden	Yes
Garage	Double
Drainage	Mains drains
Energy efficiency rating	TBC
CO2 emissions	D (33)
Agency fees	Paid by the seller

Property Description

Chalet Maya is located in a little hamlet just a few kilometers from the village centre and on the bus route that takes you to St Gervais town and gondola. A 7 minute drive in the opposite direction brings you to les Contamines.

The property was constructed by a local company and is in excellent condition and laid out as follows:

Middle floor

Steps up to the middle floor bring you to the main entrance.

Ample hallway with plenty of room for storage.

Very large L-shaped living space with lounge area around a wood and stone fireplace.

Dining area with patio door access to a exterior balcony which is large enough for table and chairs for al fresco eating.

Fully fitted kitchen that can accommodate a kitchen table or an island unit. Marble worktops and splash-back, gas hob and integrated appliances.

1 Bedroom, or room that makes a perfect TV snug, or office.

Separate WC.

Bathroom with shower and sink.

Upper floor

Sizeable landing.

4 spacious bedroom, 3 of which have balcony access. Storage or under the eaves hanging space. Wooden oak floors.

Large family bathroom with shower, bath, vanity unit and plenty of storage.

Separate WC.

Lower level

The basement incorporates a separate studio, with a main room with a fitted kitchen and a sleeping area with

built-in bunk beds.

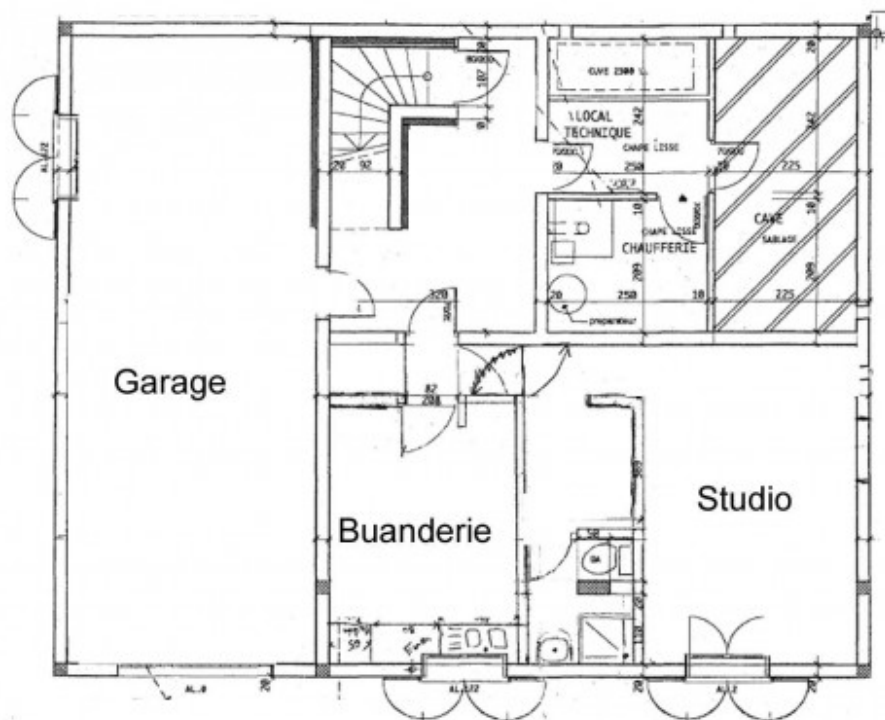
There is a separate shower room with WC.

The studio has its own terrace separate from the chalet's main terrace.

In addition, the basement has cellar, boiler room, oil tank room, and a large laundry room.

There is an integrated double garage.

The chalet also benefits from a mature closed in garden with strawberry patch and fruit bushes. The plot of land also has comfortable proportions and plenty of parking.



SOUS SOL

