



**alpine-property**

Alpine Property SAS au capital de 3 450 € - RCS Thonon les Bains 508 578 556 - siège: 153 chemin du Chargeau, 74110 Morzine, France - Titulaire de la Carte Professionnelle n° CPI 7401 2016 000 017 391 délivrée par la CCI de la Haute Savoie

Tel: +44 (0)208 123 2384

Email: [info@alpine-property.com](mailto:info@alpine-property.com)

Web: [www.alpine-property.com](http://www.alpine-property.com)

# Chalet Clochettes

**Chatel, Châtel & Vallée, Portes Du Soleil**

**550 000 €uros**



## Contact

Contact **Ed Ockelton** about this property.

**Tel:** +33 6 77 83 19 98

**Email:** [ed@alpine-property.com](mailto:ed@alpine-property.com)

# Key Features

<b>Price</b>	550 000 Euros
<b>Status</b>	SOLD
<b>Last updated</b>	14/10/2017
<b>Area</b>	Portes Du Soleil
<b>Location</b>	Châtel & Vallée
<b>Village</b>	Chatel
<b>Bedrooms</b>	3
<b>Bathrooms</b>	2
<b>Floor area</b>	97.7 m <sup>2</sup>
<b>Land area</b>	347 m <sup>2</sup>
<b>Heating</b>	Underfloor heating
<b>Chimney</b>	Open fire
<b>Ski access</b>	Ski bus
<b>Nearest skiing</b>	1 km
<b>Nearest shops</b>	1 km
<b>Garden</b>	Yes
<b>Drainage</b>	Mains drains
<b>Taxe foncière</b>	899.00 Euros
<b>Annual charges</b>	600.00 Euros
<b>Energy efficiency rating</b>	TBC
<b>CO2 emissions</b>	TBC
<b>Agency fees</b>	Paid by the seller

## Property Description

Chalet Clochettes, located along the Roitet road in Chatel, was built in the year 2000, and offers stunning, sunny views of the valley and the village.

Built over two floors, the chalet comprises;

One the main floor; an open plan living, dining, kitchen area with open fire and french doors giving access to the balcony and terrace. There is also a separate WC and useful storage cupboard.

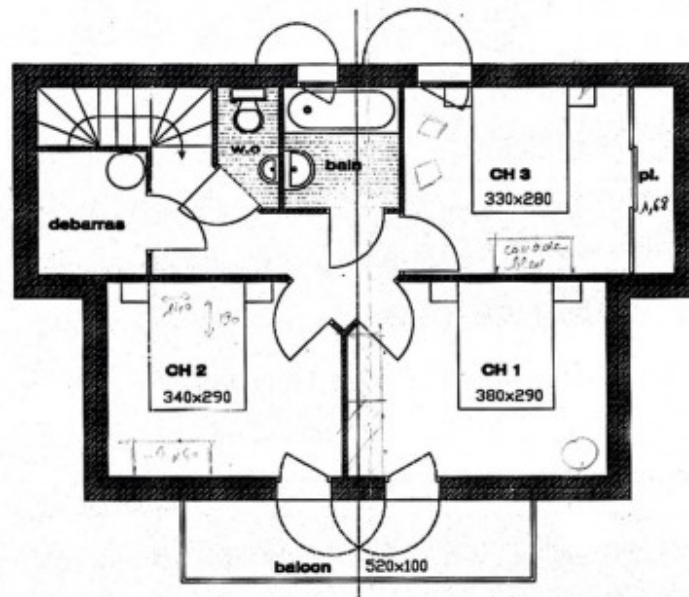
On the first floor; 3 good size bedrooms (2 with balconies), a bathroom, a shower room and a separate toilet.

The chalet is accessed via some steps from the parking area where there is a garage and parking space.

The property is located on a small co-proprietry which means that things such as snow clearing and communal gardening are taken care of by a local agency.

## Les Chalets du Roltet

Chalet



ETAGE

































