



alpine-property

Alpine Property SAS au capital de 3 450 € - RCS Thonon les Bains 508 578 556 - siège: 153 chemin du Chargeau, 74110 Morzine, France - Titulaire de la Carte Professionnelle n° CPI 7401 2016 000 017 391 délivrée par la CCI de la Haute Savoie

Tel: +44 (0)208 123 2384

Email: info@alpine-property.com

Web: www.alpine-property.com

Chalet Moléson

Les Gets, Les Gets, Portes Du Soleil

1 150 000 €uros



Contact

Contact **Claudia Buttet** about this property.

Tel: 0033608523864

Email: claudia@alpine-property.com

Key Features

Price	1 150 000 €uros
Status	SOLD
Last updated	26/11/2014
Area	Portes Du Soleil
Location	Les Gets
Village	Les Gets
Bedrooms	8
Bathrooms	4
Floor area	270 m²
Land area	200 m²
Detached	Yes
Heating	Electric radiators
Chimney	Wood burning stove
Nearest skiing	100 m
Garden	Yes
Garage	Single
Drainage	Mains drains
Taxe foncière	1300.00 €uros
Energy efficiency rating	TBC
CO2 emissions	TBC
Agency fees	Paid by the seller

Property Description

Chalet Moléson is one of those rare properties that combines great space, lovely views and an unbeatable location. Situated in the "Hotelières" sector of Les Gets, the chalet is very close to the Perrières high-speed chairlift and the "Vorosses" blue run, both of which are accessible on skis from the chalet.

The chalet is incredibly spacious, with the accommodation laid out over three floors. The main entrance hall with separate WC opens up in to the sunny, open-plan kitchen/living/dining room. The space is very generous and flexible, with areas designated for dining and relaxing. There is a lovely bay window offering views across the valley, and an open fire to keep you cosy on those chilly winter nights!

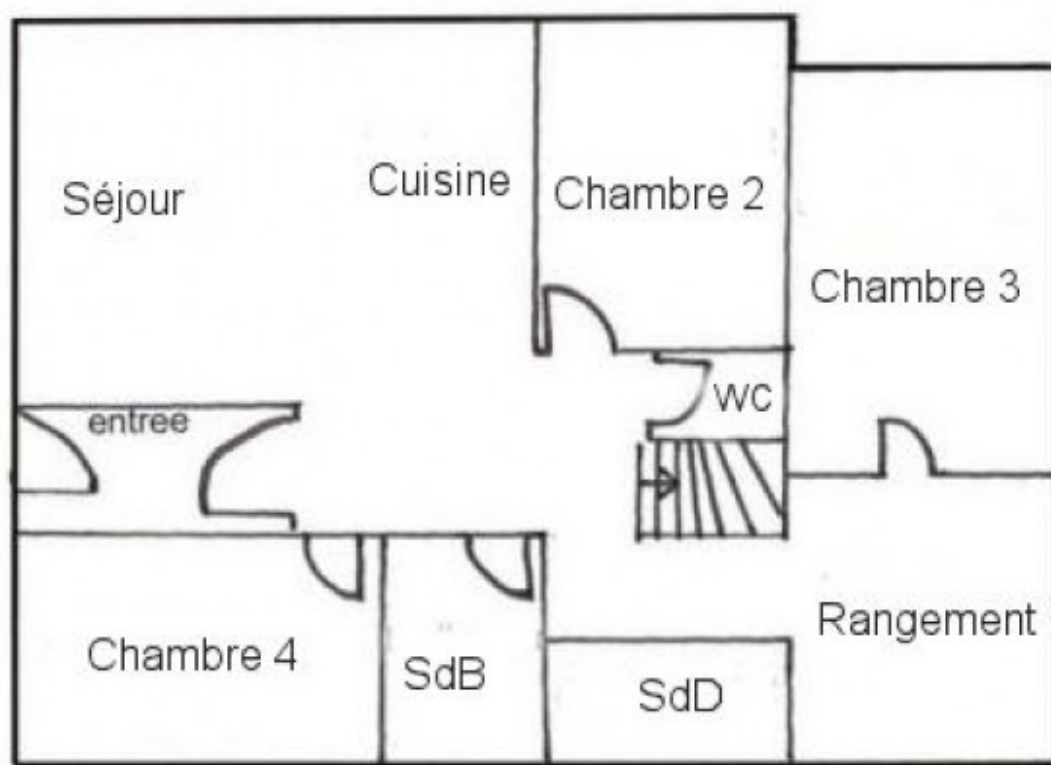
Upstairs, there are 5 bedrooms, including a spectacular master bedroom with high ceilings and a bay window. There are also two bathrooms. The master bedroom is large enough to allow for the addition of an en-suite. Two of the bedrooms also have access to a balcony.

On the ground floor, there is a separate self-contained apartment, which can be accessed either via an internal staircase or via its own private front door. The apartment measures approximately 100m², and has an open plan kitchen/living/dining space, as well as 3 bedrooms and 2 bathrooms.

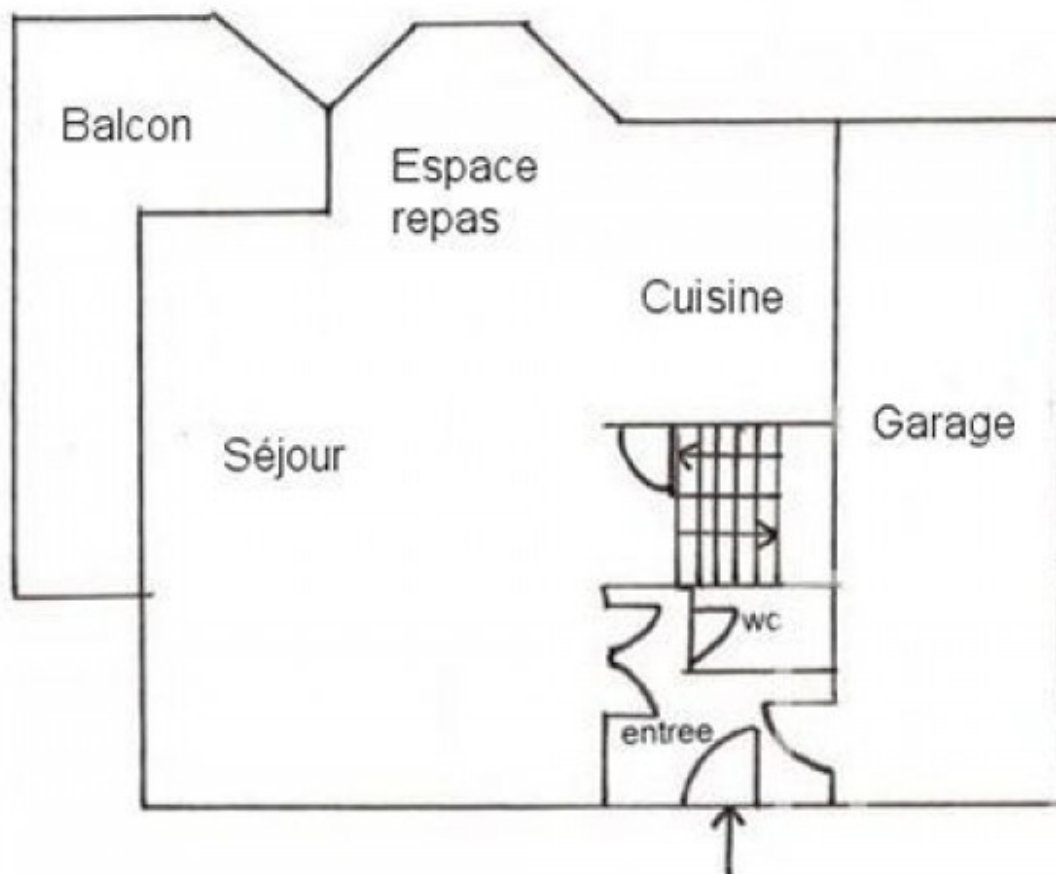
Outside, the west-facing deck is the perfect place to enjoy a drink at the end of the day whilst watching the sun set over the beautiful mountains. There is plenty of space for an outdoor dining table for al-fresco dining in the summer, and the sheltered north-facing corner of the deck would also be the perfect spot to install your hot-tub!

The chalet is situated on a cul-de-sac with 4 other properties. At the end of the cul-de-sac it is possible to hop on to your skis and join the Vorosses blue run, which takes you to the high-speed Perrières chair lift.

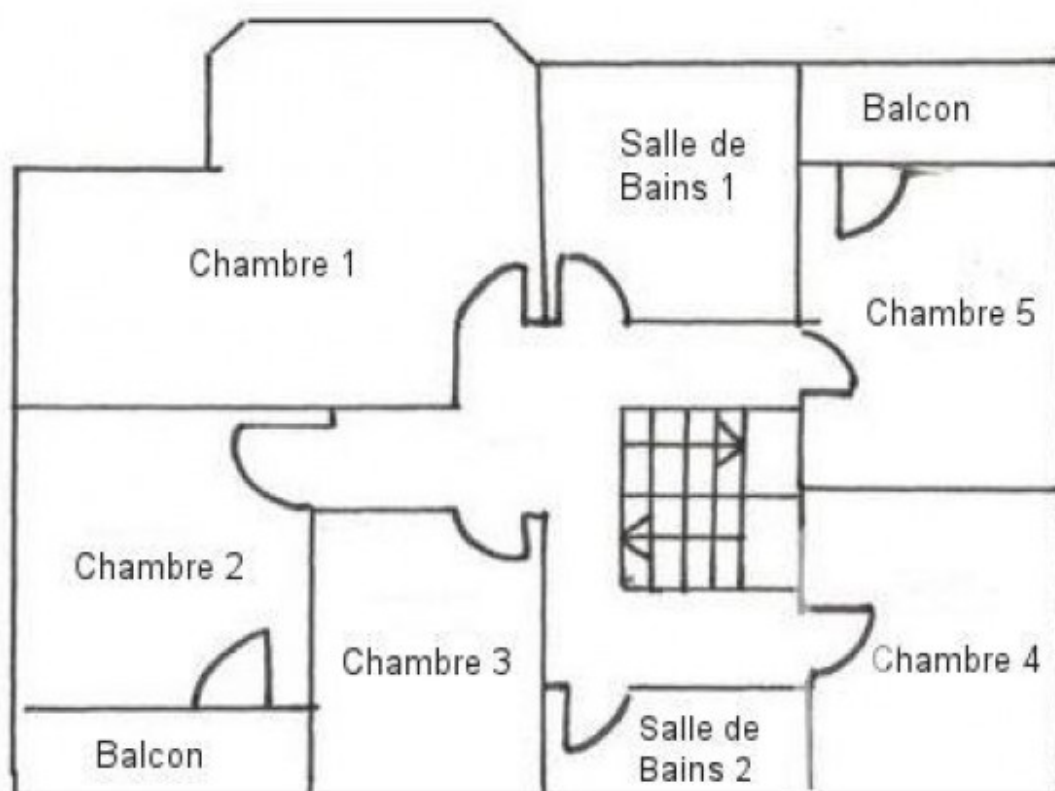
Given its size and location, Chalet Moleson would also rent very well, and could achieve in excess of €7000 pw during peak season.



Rez de Jardin



Rez de Chaussée



Etage





