



**alpine-property**

Alpine Property SAS au capital de 3 450 € - RCS Thonon les Bains 508 578 556 - siège: 153 chemin du Chargeau, 74110 Morzine, France - Titulaire de la Carte Professionnelle n° CPI 7401 2016 000 017 391 délivrée par la CCI de la Haute Savoie

Tel: +44 (0)208 123 2384

Email: [info@alpine-property.com](mailto:info@alpine-property.com)

Web: [www.alpine-property.com](http://www.alpine-property.com)

# Appt. Les Chalets des Frasses, B3

**Flumet, Megève, Mont Blanc**

**407 200 €uros**



LES CHALETS DES FRASSES  
1450  
ESPACE DIAMANT

## Contact

Contact **Val Ainaud** about this property.

**Tel:** +33 6 14 84 61 80

**Email:** [val@alpine-property.com](mailto:val@alpine-property.com)

# Key Features

<b>Price</b>	407 200 Euros
<b>Status</b>	SOLD
<b>Last updated</b>	23/09/2013
<b>Area</b>	Mont Blanc
<b>Location</b>	Megève
<b>Village</b>	Flumet
<b>Bedrooms</b>	3
<b>Bathrooms</b>	2
<b>Floor area</b>	75 m²
<b>Heating</b>	Underfloor heating
<b>Chimney</b>	Enclosed fire
<b>Nearest skiing</b>	100 m
<b>Nearest shops</b>	6.5 km
<b>Garage</b>	Covered parking
<b>Drainage</b>	Mains drains
<b>Number of lots</b>	TBC
<b>Procédure en cours</b>	No
<b>Energy efficiency rating</b>	TBC
<b>CO2 emissions</b>	TBC
<b>Agency fees</b>	Paid by the seller

## Property Description

This prestigious new apartment is situated in a chalet which comprises 3 individual apartments. It is part of a new development called Les Chalets des Frasses which is located at Notre Dame de Bellecombe, in the heart of the Espace Diamant ski area. The ski slopes are just 100m from the chalet.

Nestling on a sunny slope, the apartments benefit from a south and/or west facing exposure, with picture postcard views of Mont Charvin. The construction conforms with the latest building regulations (RT 2012) and particular care has been taken to respect the traditional savoyard architecture with the use of natural stone and wood on the exterior and high quality interior finishings. The use of exposed timbers lend character and an alpine ambiance to the chalets which integrate perfectly with their surroundings.

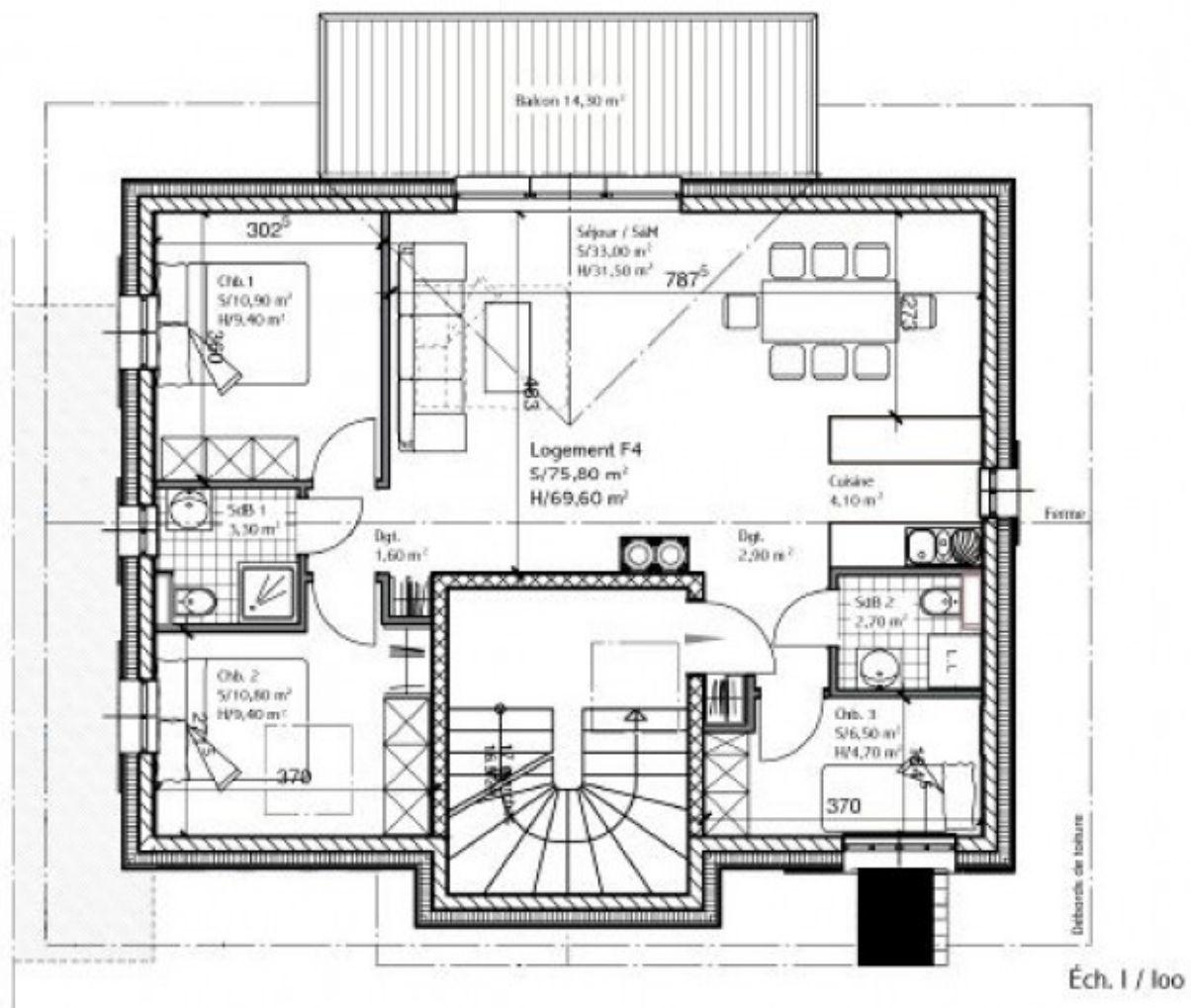
Apartment B3 has a floor area of 69.60m² plus 6.20m² with a reduced head height under 1.80m. The accommodation comprises: living room with fireplace, dining area, fitted kitchen, west facing balcony, 2 spacious bedrooms with built-in storage, 3rd bedroom ideal for bunk beds, shower room/WC, separate WC with space for a washing machine.

The layout of Apartment B3 is similar to that of Apartment B2 which is also visible on this web site.

The lower ground floor has private parking spaces plus a heated ski room with individual ski lockers for each apartment. There are also outside parking spaces for visitors.

The project is due for completion Christmas 2014 and is subject to reduced notaire's fees.

The property is covered by the copropriété rules.

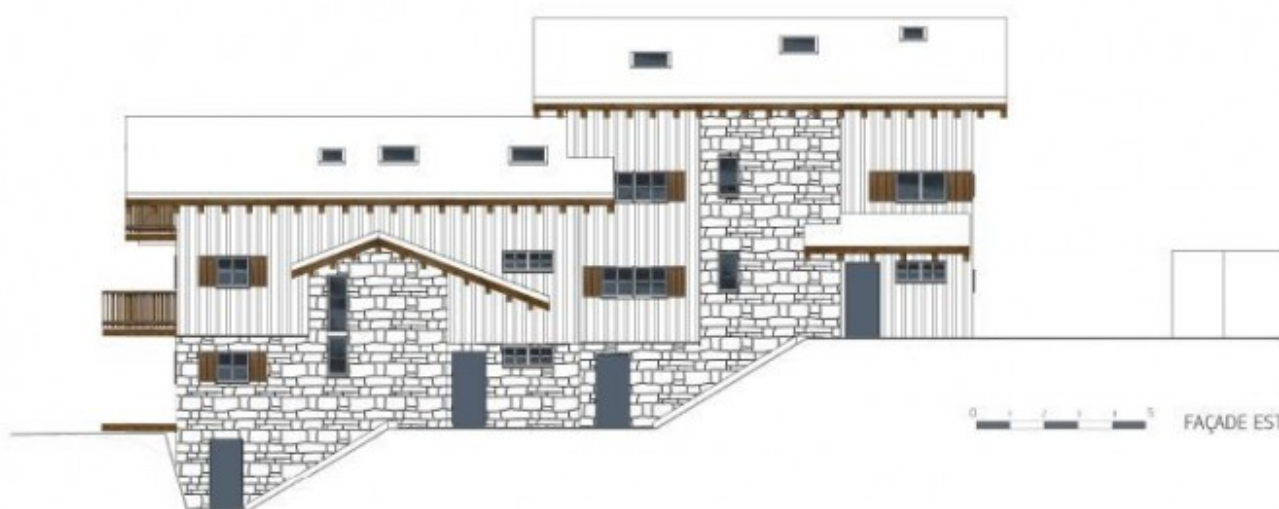






0 1 2 3 4 5 FAÇADE SUD

LES CHALETS DES PRASSES  
 1450  
 ESPACE DIAMANT



0 1 2 3 4 5 FAÇADE EST

LES CHALETS DES PRASSES  
 1450  
 ESPACE DIAMANT





*LES CHALETS DES PRASSES*  
 1450  
*ESPACE DIAMANT*





