



**alpine-property**

Alpine Property SAS au capital de 3 450 € - RCS Thonon les Bains 508 578 556 - siège: 153 chemin du Chargeau, 74110 Morzine, France - Titulaire de la Carte Professionnelle n° CPI 7401 2016 000 017 391 délivrée par la CCI de la Haute Savoie

Tel: +44 (0)208 123 2384

Email: [info@alpine-property.com](mailto:info@alpine-property.com)

Web: [www.alpine-property.com](http://www.alpine-property.com)

# Chalet de Veroce

**Saint Gervais les Bains, St Gervais, Mont Blanc**

**858 000 Euros**



## Contact

Contact **Jean-Christophe Skiera** about this property.

**Tel:** +33 6 08 46 86 86

**Email:** [jc@alpine-property.com](mailto:jc@alpine-property.com)

# Key Features

<b>Price</b>	858 000 Euros
<b>Status</b>	SOLD
<b>Last updated</b>	07/01/2014
<b>Area</b>	Mont Blanc
<b>Location</b>	St Gervais
<b>Village</b>	Saint Gervais les Bains
<b>Bedrooms</b>	3
<b>Bathrooms</b>	2
<b>Floor area</b>	156 m²
<b>Land area</b>	997 m²
<b>Detached</b>	Yes
<b>Heating</b>	Underfloor heating
<b>Chimney</b>	Open fire
<b>Nearest skiing</b>	1.3 km
<b>Nearest shops</b>	1.3 km
<b>Garden</b>	Yes
<b>Garage</b>	Single
<b>Taxe foncière</b>	689.00 Euros
<b>Energy efficiency rating</b>	D (191)
<b>CO2 emissions</b>	TBC
<b>Agency fees</b>	Paid by the seller

## Property Description

A 3 bedroom chalet situated in the quiet hamlet of St Nicholas de Veroce, with stunning views overlooking the valley and the Mont Blanc range.

Chalet de Veroce is located at the end of a no-through road just outside the centre of St Nicholas, one of St Gervais' outlying hamlets. Recently built, in 2011, this property offers living accommodation on 3 levels and is laid out as follows:

### Ground Floor

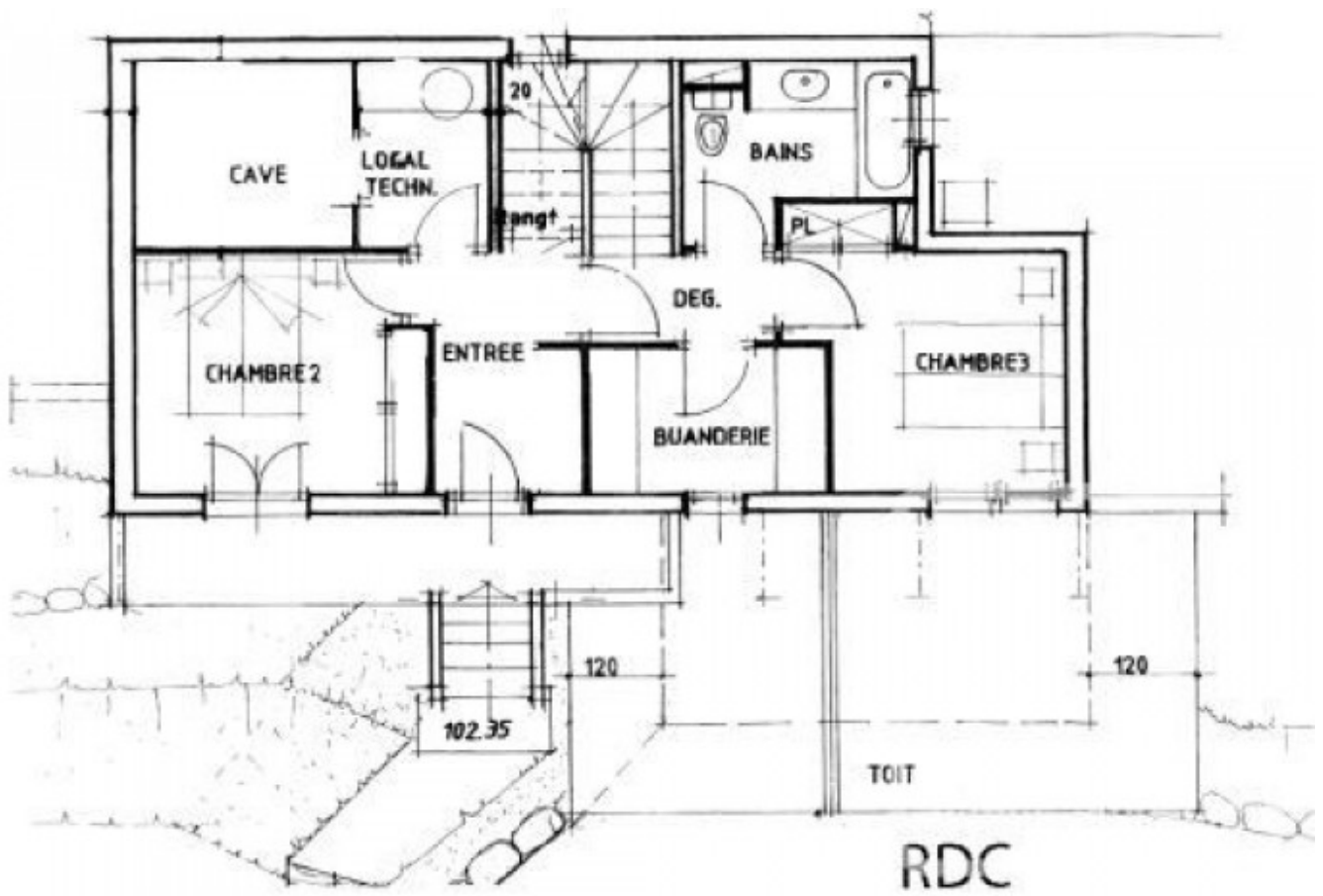
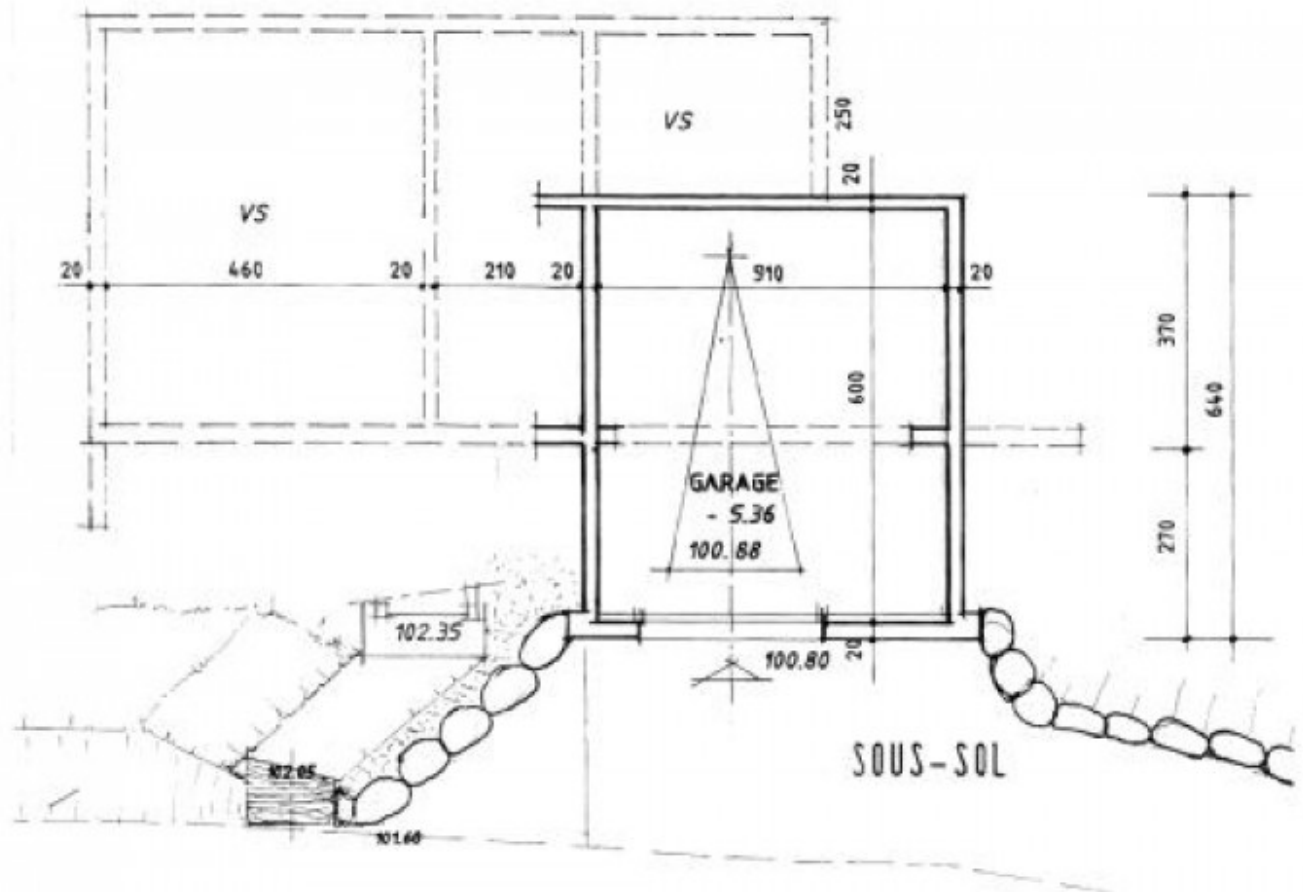
- Garage
- Entrance hallway with cupboards and storage.
- 1 bedroom with balcony access and fitted wardrobes.
- 1 further bedroom with fitted wardrobes.
- Spacious bathroom with WC, bath and shower attachment, sink.
- Laundry/ utility room.
- Storage room with boiler.

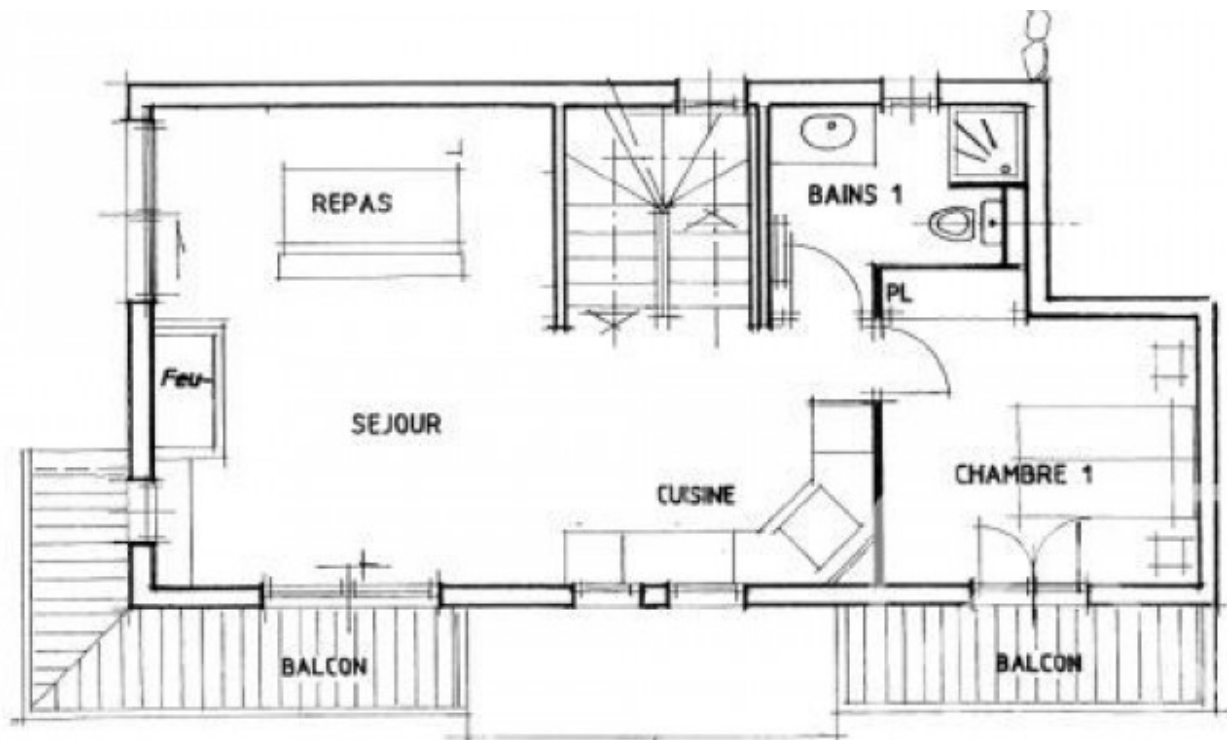
### Middle floor

- Spacious lounge, dining area around a fireplace, kitchen.
- Large patio windows showcase the stunning views across the valley and give access to balcony and outdoor space.
- 1 Bedroom open to the eaves and with access to a balcony. Built in wardrobes.
- Shower room with sink, WC.

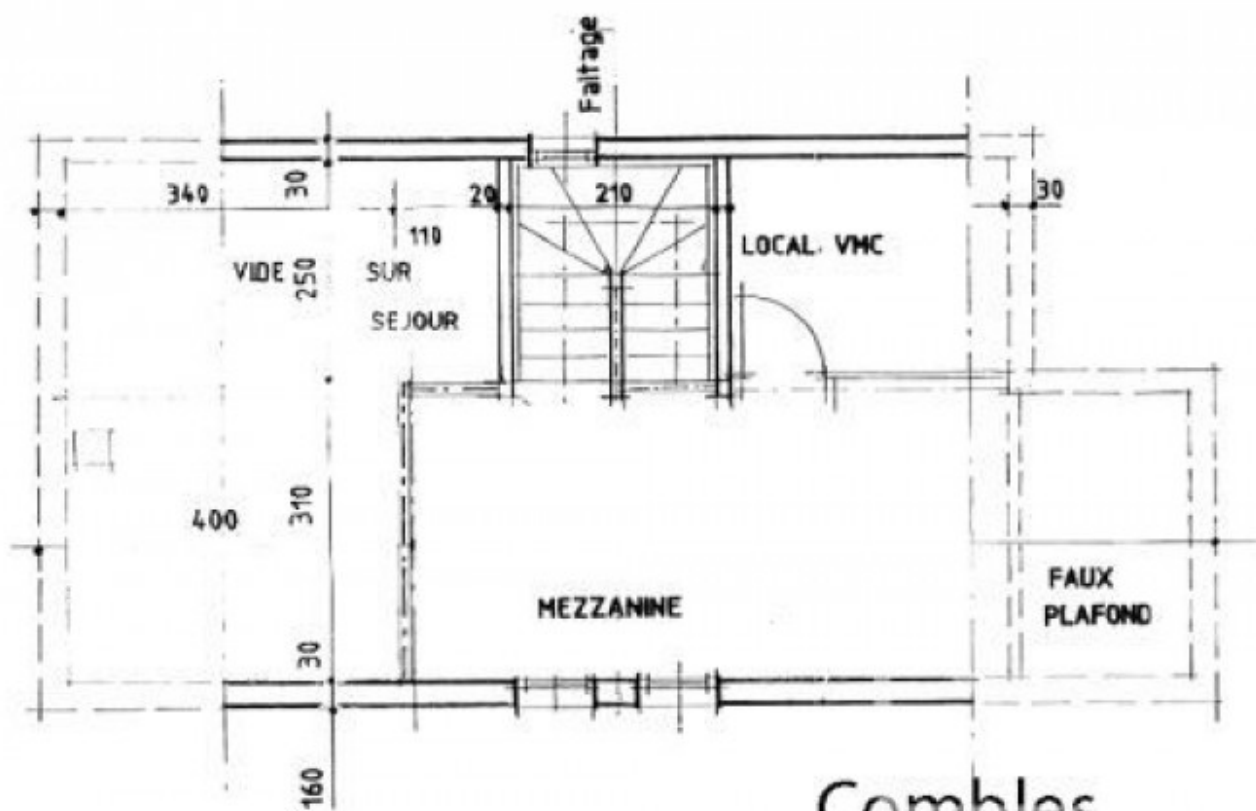
### Top Floor

Open planned mezzanine level suitably large to house extra sleeping area or study.  
Large closet-storage room





Etage



Combles



















