



alpine-property

Alpine Property SAS au capital de 3 450 € - RCS Thonon les Bains 508 578 556 - siège: 153 chemin du Chargeau, 74110 Morzine, France - Titulaire de la Carte Professionnelle n° CPI 7401 2016 000 017 391 délivrée par la CCI de la Haute Savoie

Tel: +44 (0)208 123 2384

Email: info@alpine-property.com

Web: www.alpine-property.com

Chalet Bois

Saint Jean d'Aulps, St Jean d'Aulps & Vallée, Portes Du Soleil

230 000 €uros



Contact

Contact **Claudia Buttet** about this property.

Tel: 0033608523864

Email: claudia@alpine-property.com

Key Features

Price	230 000 Euros
Status	SOLD
Last updated	05/10/2012
Area	Portes Du Soleil
Location	St Jean d'Aulps & Vallée
Village	Saint Jean d'Aulps
Bedrooms	2
Bathrooms	2
Floor area	71 m²
Land area	128 m²
Detached	Yes
Heating	Electric radiators
Nearest skiing	3 km
Nearest shops	200 m
Garden	Yes
Drainage	Mains drains
Taxe foncière	111.00 Euros
Energy efficiency rating	G (500)
CO2 emissions	TBC
Agency fees	Paid by the seller

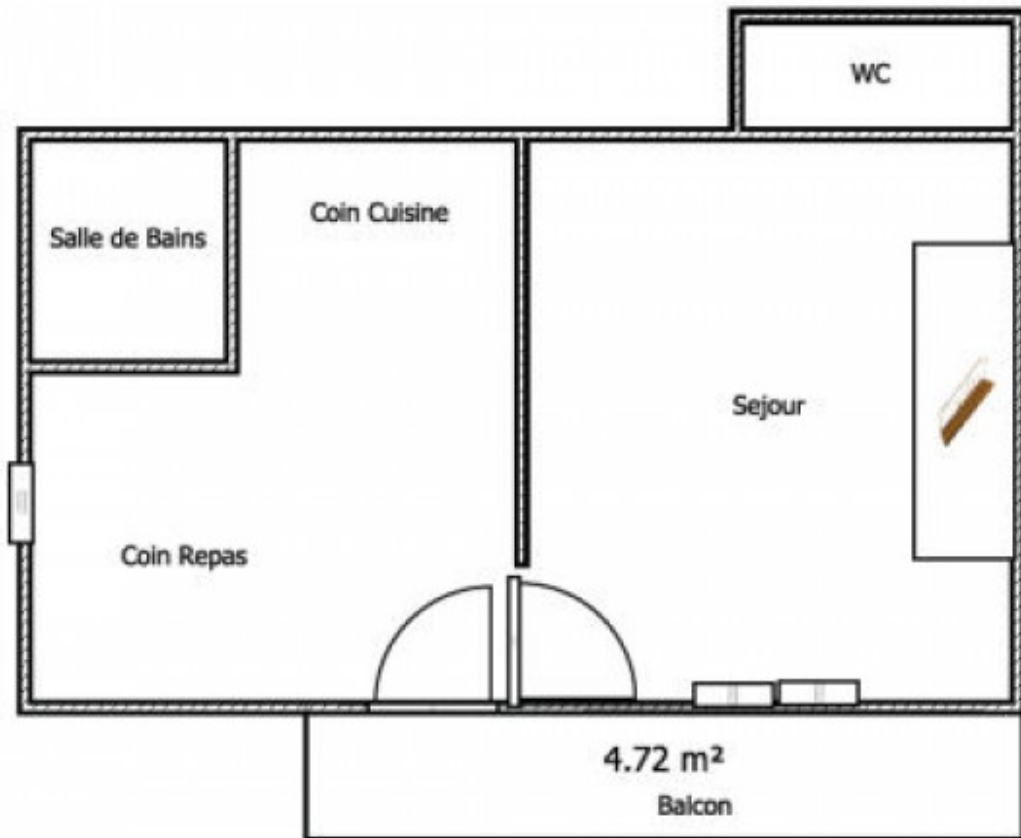
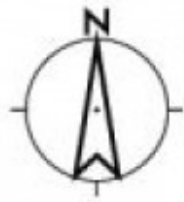
Property Description

This pretty little chalet is the ideal purchase for somebody with a spark of individuality! Quirky and charming, Chalet Bois could not be better located - in the heart of St Jean d'Aulps village, yet away from the main road and with a small private garden. All the village's amenities are within a stone's throw, including the bus stop to the slopes of La Grande Terche or Morzine.

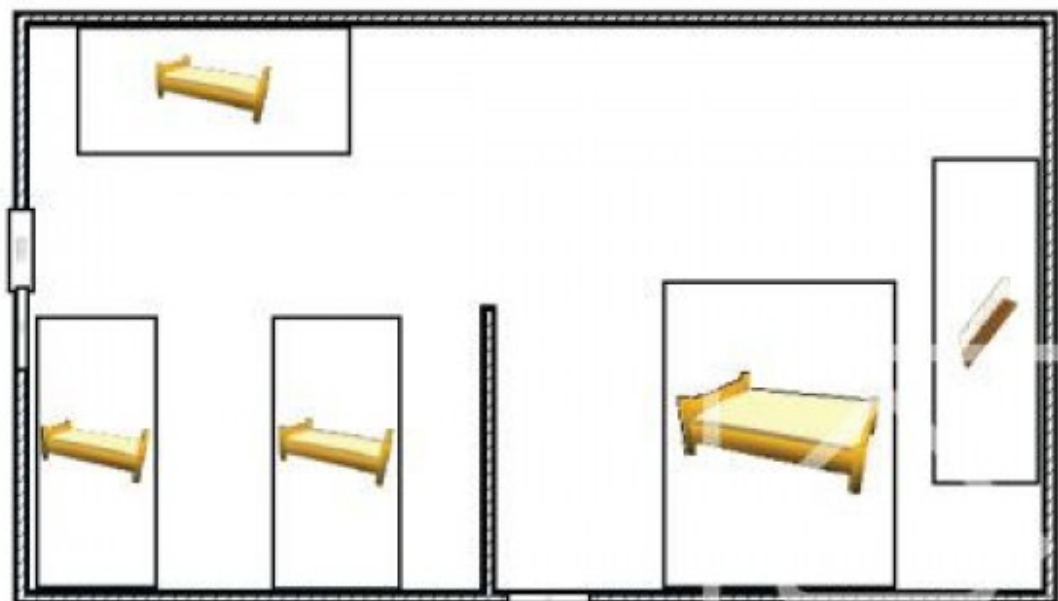
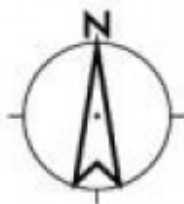
The chalet itself is split over 3 levels. The main floor living space comprises a newly fitted kitchen with dining table and separate sitting room, along with a shower room and separate WC. Upstairs is a large, bright bedroom with sloping roof (limited head height) and plenty of room for at least 4 people. The bedroom currently houses 3 single beds and a double bed. It would also be straightforward to partition off the rooms to give two separate rooms.

On the lower ground floor, a highly successful cellar conversion has recently been completed. A studio apartment comprising sleeping/living area, kitchenette and shower room has been fitted with almost floor-to-ceiling windows, giving a bright and airy feel, unusual in a lower ground floor conversion.

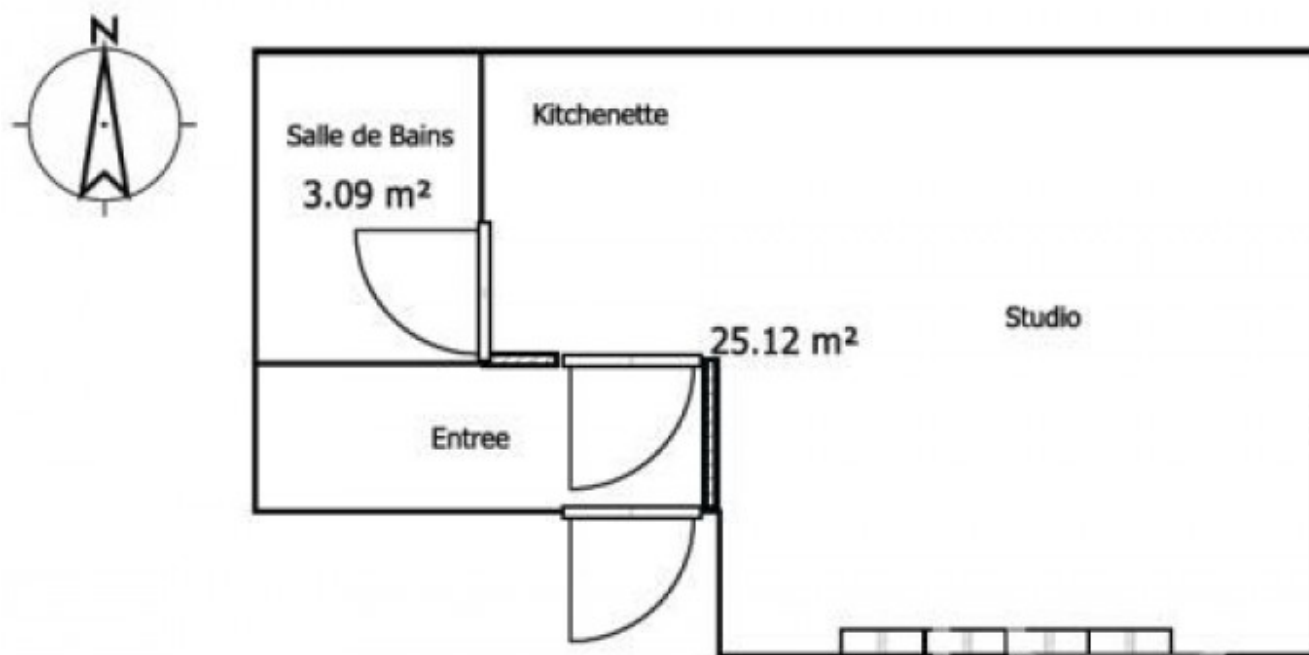
Outside, there is a private balcony as well as a small garden. A public car park is located approximately 50m from the chalet.



Chalet Bois - middle floor



Chalet Bois - top floor



Chalet Bois - ground floor studio





















