



alpine-property

Alpine Property SAS au capital de 3 450 € - RCS Thonon les Bains 508 578 556 - siège: 153 chemin du Chargeau, 74110 Morzine, France - Titulaire de la Carte Professionnelle n° CPI 7401 2016 000 017 391 délivrée par la CCI de la Haute Savoie

Tel: +44 (0)208 123 2384

Email: info@alpine-property.com

Web: www.alpine-property.com

Chalet Champoutant

Saint Gervais les Bains, St Gervais, Mont Blanc

1 875 000 €uros



Contact

Contact **Jean-Christophe Skiera** about this property.

Tel: +33 6 08 46 86 86

Email: jc@alpine-property.com

Key Features

Price	1 875 000 €uros
Status	SOLD
Last updated	07/01/2015
Area	Mont Blanc
Location	St Gervais
Village	Saint Gervais les Bains
Bedrooms	6
Bathrooms	6
Floor area	240 m ²
Land area	1600 m ²
Heating	Underfloor heating
Chimney	Open fire
Ski access	Ski bus
Nearest skiing	2 km
Nearest shops	4 km
Garden	Yes
Garage	Covered parking
Drainage	Mains drains
Energy efficiency rating	B (71)
CO2 emissions	TBC
Agency fees	Paid by the seller

Property Description

A luxury 6 bedroom chalet with uninterrupted views of Mont Blanc in the St Gervais valley.

Chalet Champoutant is a new construction built in traditional old wood. It offers 6 bedrooms all with ensuite bathrooms, mezzanine, large open planned living, dinning and kitchen. No expense has been spared and high quality materials and attention to detail are seen throughout. Wooden floors and antique doors with wrought iron, are combined with stylish modern aspects such as a polished concrete kitchen and designer lighting.

Situated above the valley floor it looks directly across to the Mont Blanc, Les Houches and the Fiz mountains. It is a short drive to the ski lifts and 8 minute drive into the centre of St Gervais.

The chalet is laid out as follows:

Ground floor:

Entrance through a stunning old door

Entrance- hallway

Bedroom 1 with ensuite shower room and patio access

Bedroom 2 with ensuite shower room with WC, dressing area

Bedroom 3 with ensuite shower room and patio access

Bedroom 4 with ensuite spa bath and WC, access to patio

Dressing room

Laundry/ boiler room

Separate WC

Closed and tiled garage

Middle floor:

The old wood staircase takes you directly up into the open planned living space.

Polished concrete kitchen with old wood cabinets and breakfast area

Spacious living/dining room arranged around a stone and wood fireplace

Open planned to the ceiling with view of mezzanine.

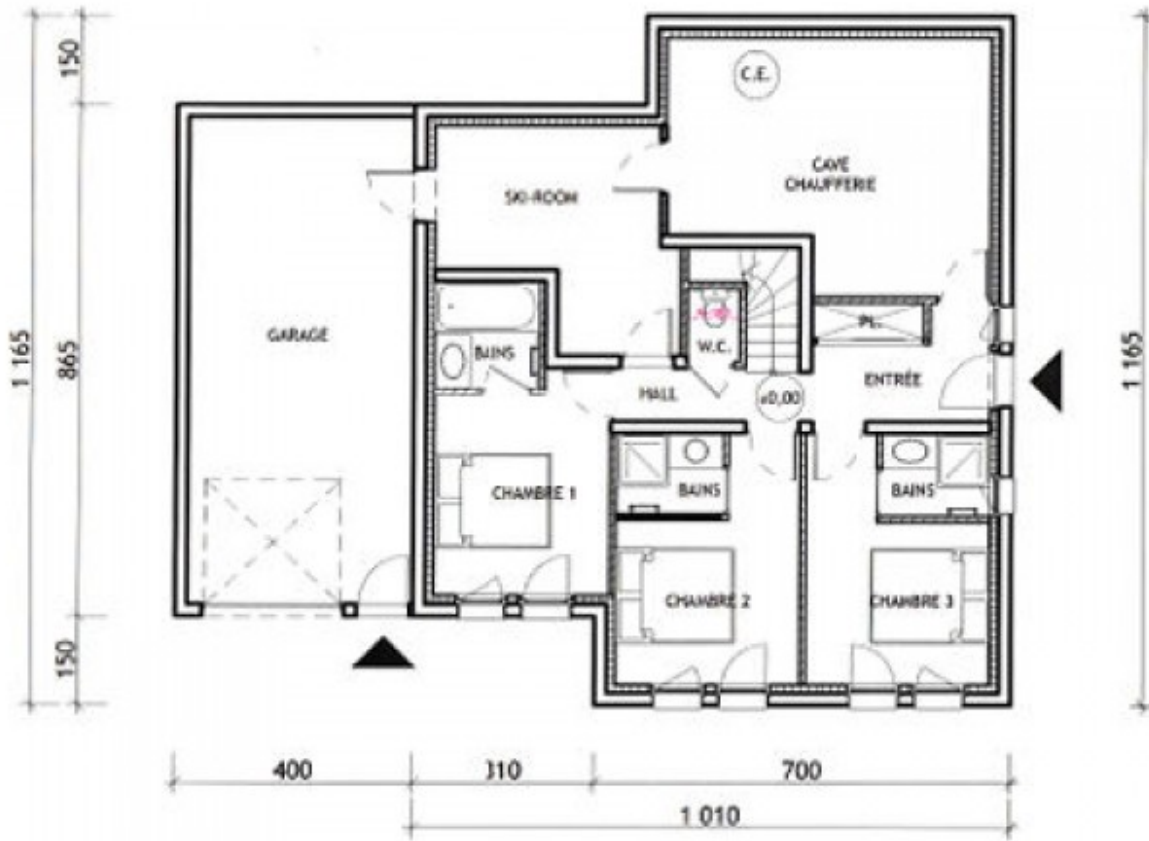
Patio doors to the south facing terrace and balcony
Separate WC
Bedroom 5 with ensuite bathroom, dressing and access to patio

Top floor:

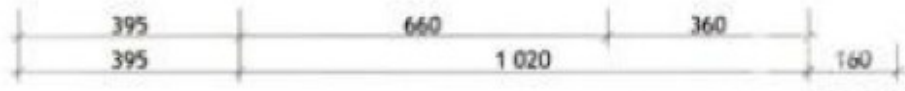
Large mezzanine space with further partitioned study area and balcony access. The floor is fashioned in traditional parquetry wood and there are feature antique doors combined with modern glass guard rails.

Bedroom 6 with ensuite shower room.

The exterior space includes a large decked terrace and wraparound balcony. The garage also has a covered open car port for easy parking.



REZ-DE-JARDIN



ETAGE



COMBLES

