



alpine-property

Alpine Property SAS au capital de 3 450 € - RCS Thonon les Bains 508 578 556 - siège: 153 chemin du Chargeau, 74110 Morzine, France - Titulaire de la Carte Professionnelle n° CPI 7401 2016 000 017 391 délivrée par la CCI de la Haute Savoie

Tel: +44 (0)208 123 2384

Email: info@alpine-property.com

Web: www.alpine-property.com

Appt. Cassiopee A2

Samoëns, Samoëns & Vallée, Grand Massif

435 000 €uros



Contact

Contact about this property.

Tel:

Email:

Key Features

Price	435 000 Euros
Status	SOLD
Last updated	18/12/2012
Area	Grand Massif
Location	Samoëns & Vallée
Village	Samoëns
Bedrooms	2
Bathrooms	2
Floor area	113 m²
Heating	Underfloor heating
Chimney	Open fire
Nearest skiing	900 m
Nearest shops	200 m
Garage	Single
Drainage	Mains drains
Annual Taxes (est)	1 182 Euros
Number of lots	TBC
Procédure en cours	No
Energy efficiency rating	TBC
CO2 emissions	TBC
Agency fees	Paid by the seller

Property Description

Chalet Cassiopee is part of a small, recently built development, near the centre of Samöens. It is situated just 250m from the church and 100m from the ski bus stop, on a sunny, south facing slope overlooking the valley.

Externally the chalets are finished in Douglas Fir, this wood is carefully selected for it's resistance to rot and low maintenance, internally the properties are finished with tiles over the first floor, pine parquet on the second floor and concrete on the ground floor. The heating and hot water is electric and there is a traditional, open fire in the living room. The kitchen is fully equipped with an oven, ceramic hob, fridge, dishwasher and granite worktops.

There is a shared external grassed area, which is maintained as part of the co- ownership agreement.

The chalet is split into 4 individual dwellings. Apartment A2 has a total floor area of 113 m² and comprises:

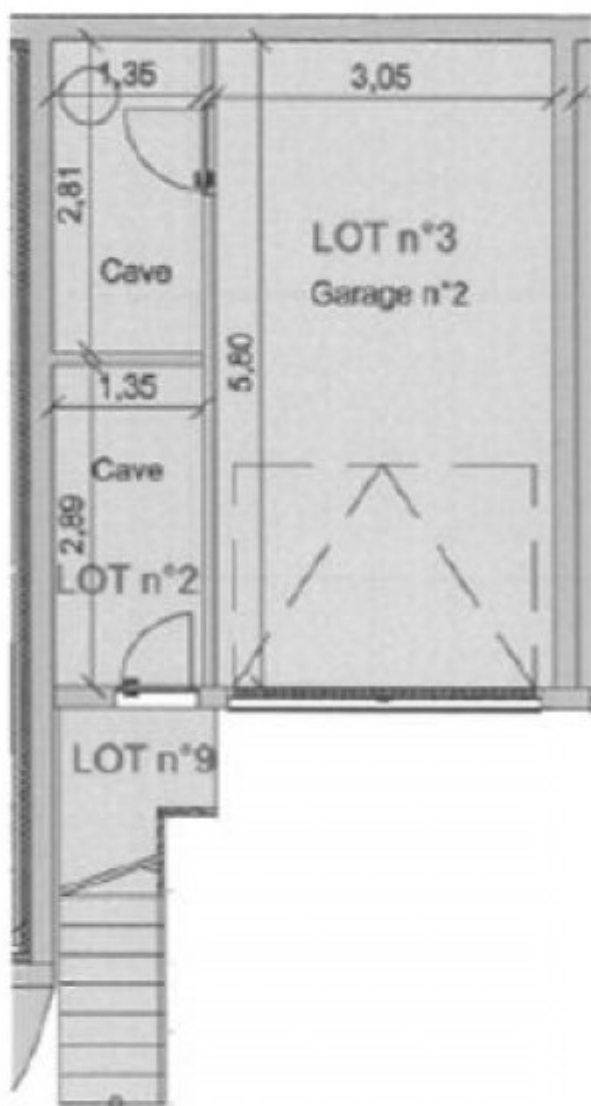
Ground floor: Garage and boiler room / storage.

First floor: Stairs leading up to large south facing balcony and entrance into an open plan living and dining area and equipped kitchen. There is also a separate WC on this level.

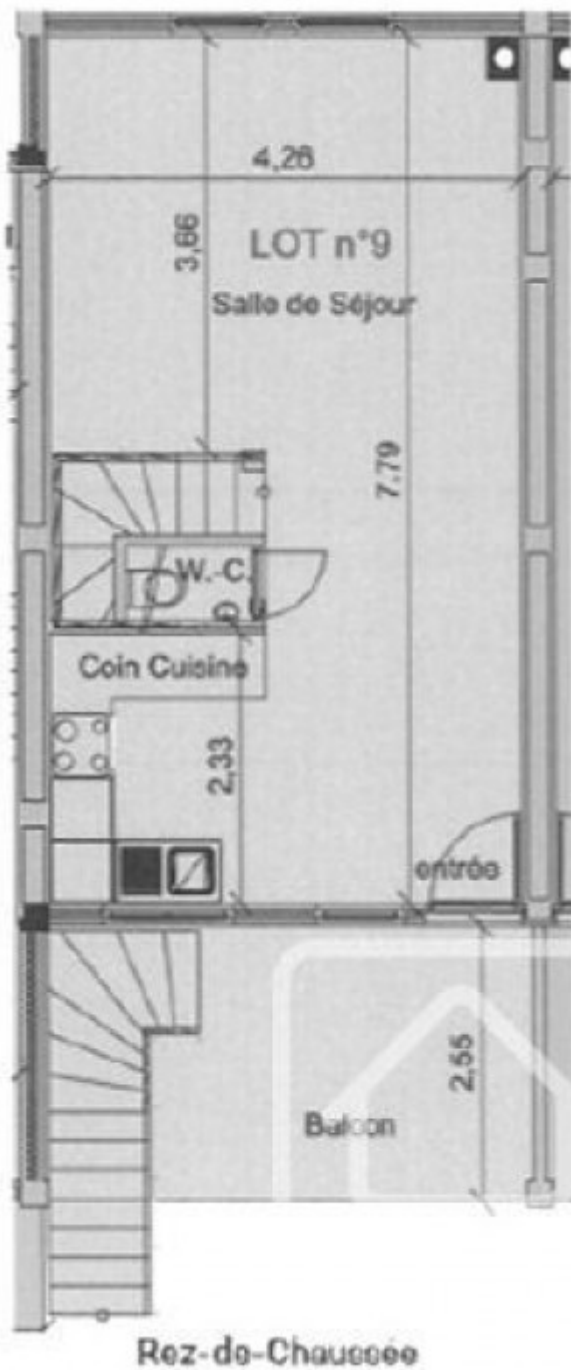
Second floor: Double bedroom with en-suite bathroom and access onto a south facing balcony. Double bedroom with en-suite shower room. It would be possible to convert this level to 3 bedrooms, if required (see plan).

Extra communal parking is provided for all the chalets.

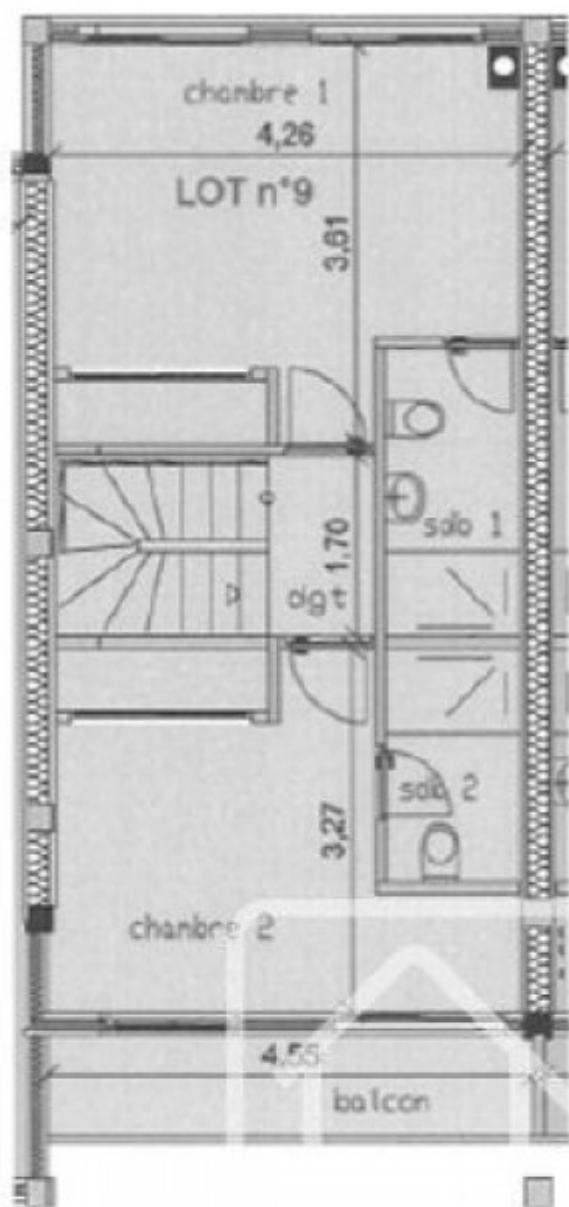
The property is covered by the copropriété rules.



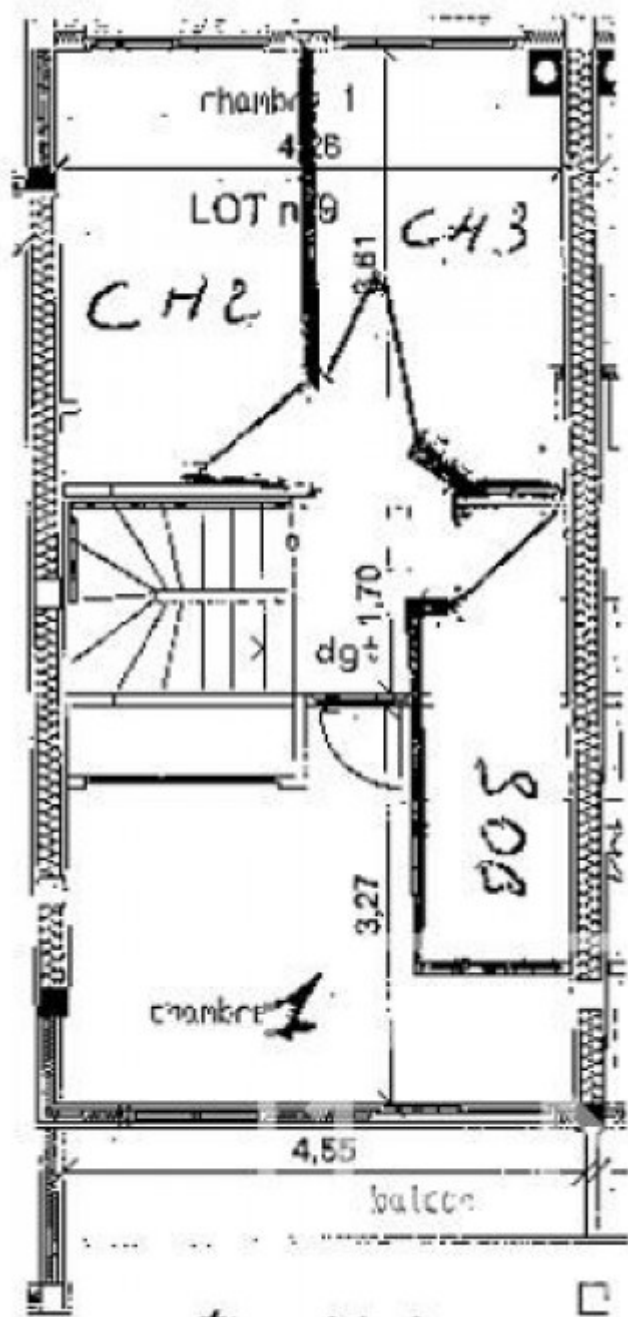
Rez-de-chaussée



Rez-de-Chaussée



1er étage



Étage (plan)







