



alpine-property

Alpine Property SAS au capital de 3 450 € - RCS Thonon les Bains 508 578 556 - siège: 153 chemin du Chargeau, 74110 Morzine, France - Titulaire de la Carte Professionnelle n° CPI 7401 2016 000 017 391 délivrée par la CCI de la Haute Savoie

Tel: +44 (0)208 123 2384

Email: info@alpine-property.com

Web: www.alpine-property.com

Appt. Les Chalets du Villaret, A001

La Clusaz, La Clusaz, Aravis

295 000 €uros



Contact

Contact **Pernille Porte** about this property.

Tel: +33 6 32 66 01 45

Email: pernille@alpine-property.com

Key Features

Price	295 000 Euros
Status	SOLD
Last updated	26/04/2012
Area	Aravis
Location	La Clusaz
Village	La Clusaz
Bedrooms	2
Bathrooms	1
Floor area	62 m²
Heating	Electric radiators
Ski access	Ski bus
Nearest skiing	2 km
Nearest shops	1 km
Drainage	Mains drains
Number of lots	TBC
Procédure en cours	No
Energy efficiency rating	TBC
CO2 emissions	TBC
Agency fees	Paid by the seller

Property Description

'Les Chalets du Villaret' is a brand new residential development situated at Saint Jean de Sixt. The development consists of 4 chalets, as follows : Chalet A 'L'Aiguille Verte', Chalet B 'La Balmaz', Chalet C 'Le Chatillon' and Chalet D 'Le Danay'. The programme will benefit from the THPE (Très Haute Performance Energétique) label, due to it's high energy-efficient construction.

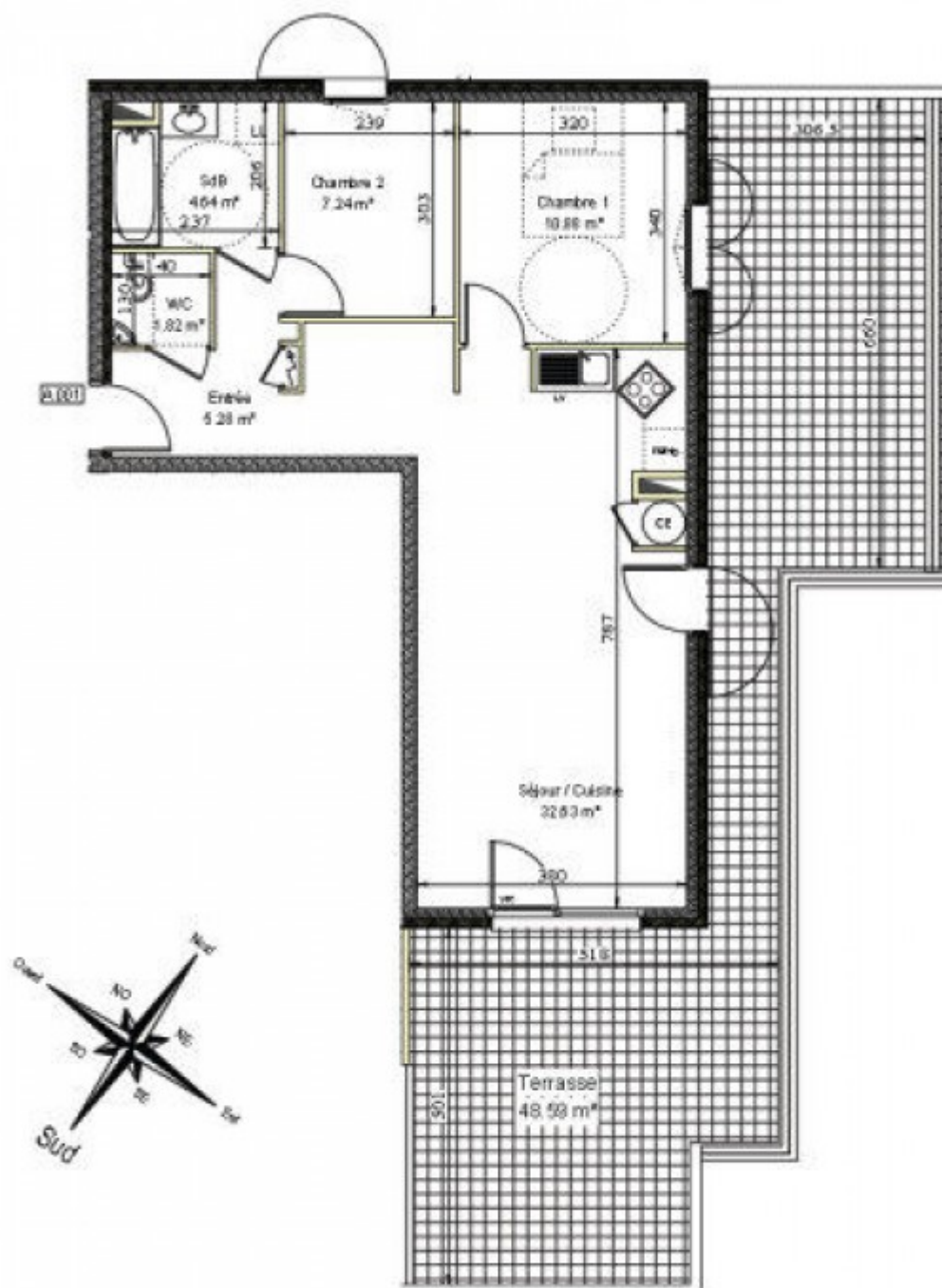
Apartment A001 is on the elevated, garden level (R + 1) which is rare for apartments in this area and means that it enjoys the privilege of a private terrace of 48m² which is south-east facing. The accommodation in the apartment comprises: entrance hall, 32m² living room, 2 bedrooms, bathroom, separate WC.

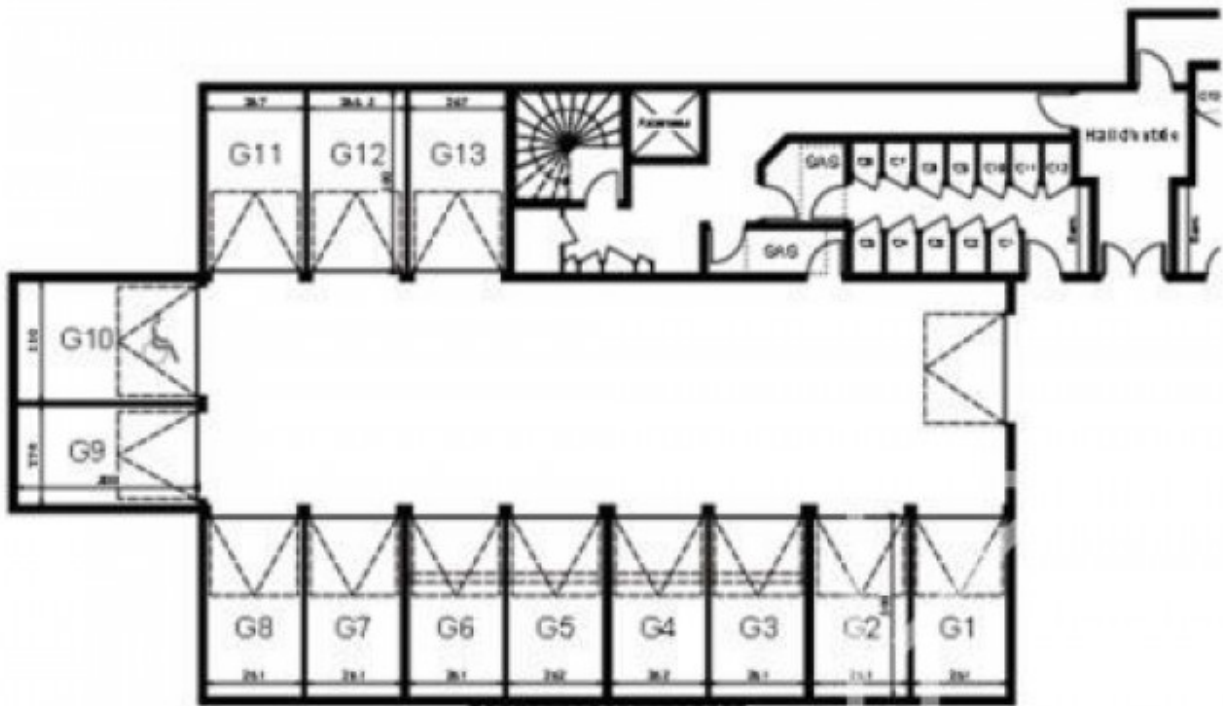
The finishings will be of a high quality, designed to complement the architecture and mountain setting.

As this is a new development, it will benefit from reduced Notaire's fees and at this stage of the project, it is possible to have the choice of chalet, floor and orientation of your apartment!

Each apartment has it's own separate ski locker and garages are available as an optional extra.

The property is covered by the copropriété rules.





Parking







