



**alpine-property**

Alpine Property SAS au capital de 3 450 € - RCS Thonon les Bains 508 578 556 - siège: 153 chemin du Chargeau, 74110 Morzine, France - Titulaire de la Carte Professionnelle n° CPI 7401 2016 000 017 391 délivrée par la CCI de la Haute Savoie

Tel: +44 (0)208 123 2384

Email: [info@alpine-property.com](mailto:info@alpine-property.com)

Web: [www.alpine-property.com](http://www.alpine-property.com)

# Chalet Le Chargeau

**Morzine, Morzine, Portes Du Soleil**

**495 000 Euros**



## Contact

Contact **Lee Massey** about this property.

**Tel:** +33 6 89 56 89 78

**Email:** [Lee@alpine-property.com](mailto:Lee@alpine-property.com)

# Key Features

<b>Price</b>	495 000 Euros
<b>Status</b>	SOLD
<b>Last updated</b>	23/05/2013
<b>Area</b>	Portes Du Soleil
<b>Location</b>	Morzine
<b>Village</b>	Morzine
<b>Bedrooms</b>	4
<b>Bathrooms</b>	1
<b>Land area</b>	600 m²
<b>Detached</b>	Yes
<b>Heating</b>	Oil fired central heating
<b>Chimney</b>	Wood burning stove
<b>Ski access</b>	Ski bus
<b>Nearest skiing</b>	2.5 km
<b>Nearest shops</b>	4 km
<b>Garden</b>	Yes
<b>Drainage</b>	Mains drains
<b>Energy efficiency rating</b>	TBC
<b>CO2 emissions</b>	TBC
<b>Agency fees</b>	Paid by the seller

## Property Description

Chalet Le Chargeau is situated in a quiet, sunny spot in one of the most sought after locations in Morzine. La Vallée de la Manche arguably offers some of the most stunning scenery in the area and is a firm favourite with both walkers and skiers, alike. In winter, it is possible for competent skiers to ski back from Avoriaz, via a well known off-piste run, to within an easy walk from the chalet. The same track follows the river down into Morzine and up to the mountains providing some superb summer walking routes. The hourly ski bus service to Morzine, runs throughout the winter season.

The chalet occupies an elevated position in the hamlet of Le Chargeau, a short distance back from the main valley road. The road is regularly cleared but it's a very snowy spot and full time residents find a 4x4 practical.

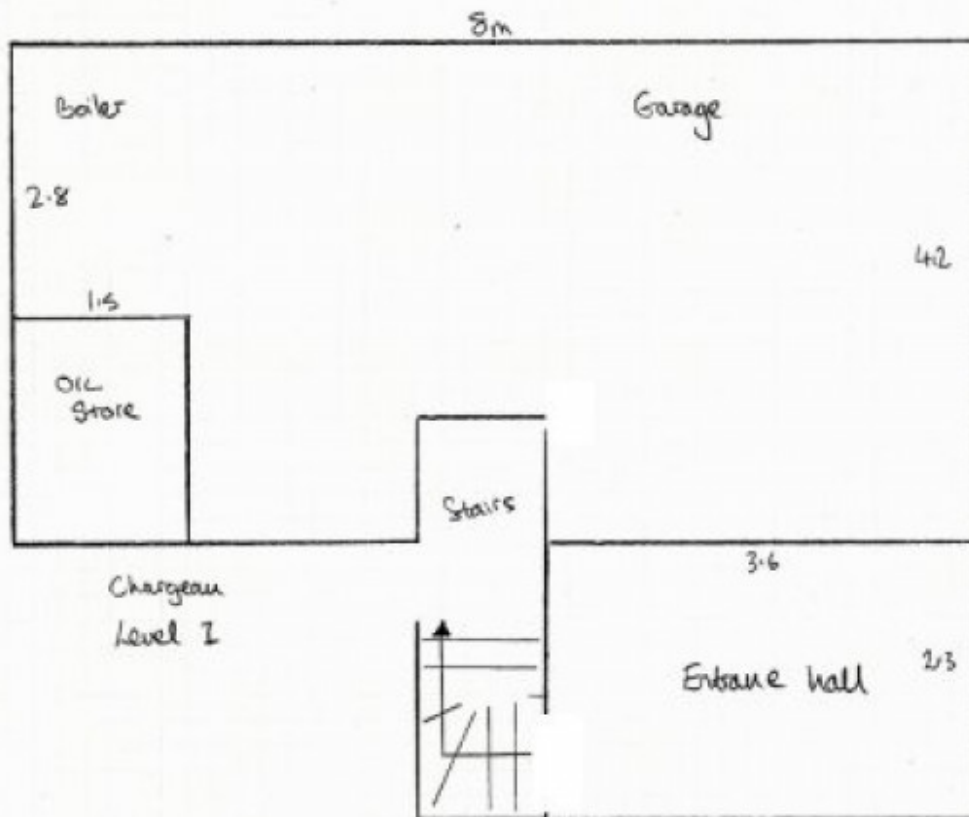
Chalet Le Chargeau is a detached chalet on a plot of land of 600m². It has an enormous garage and spacious entrance (both very practical in the mountains) and beautiful views across to Angolon mountain on the opposite side of the valley.

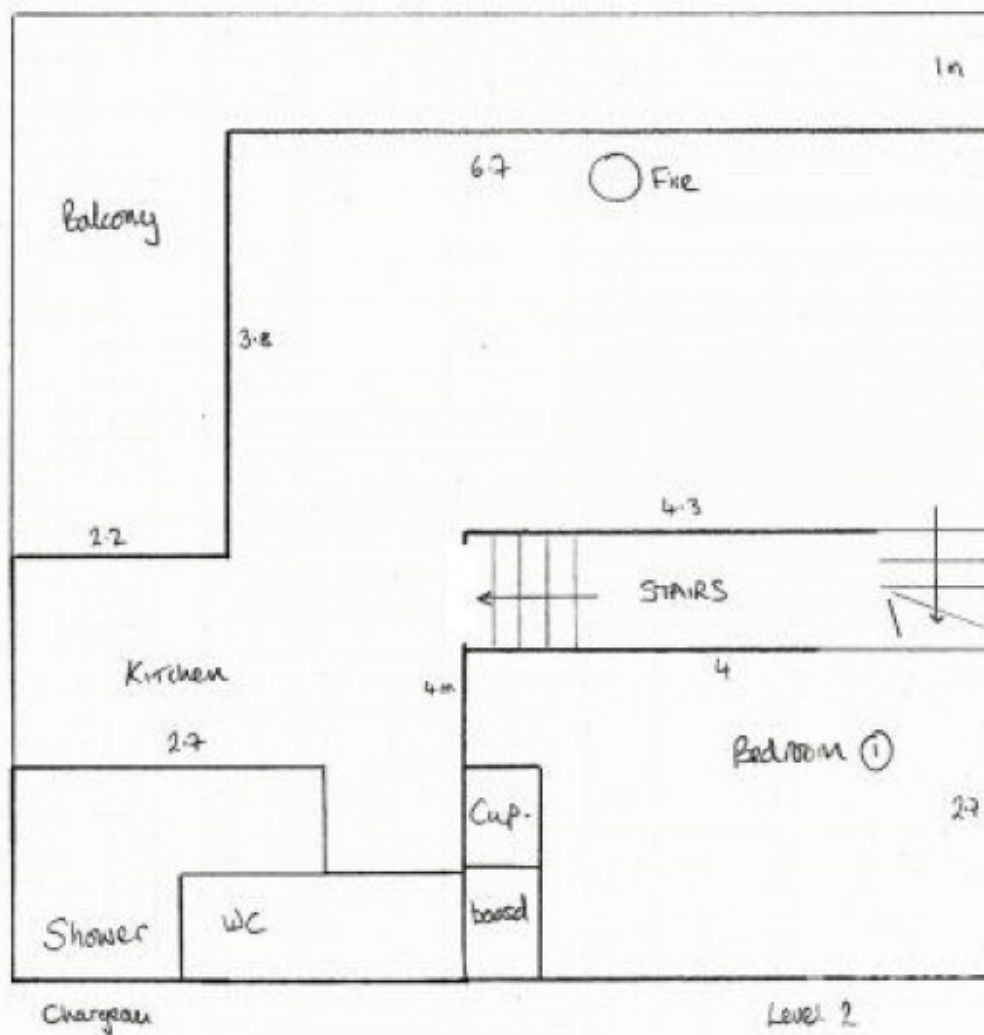
The chalet is on 3 levels, as follows:

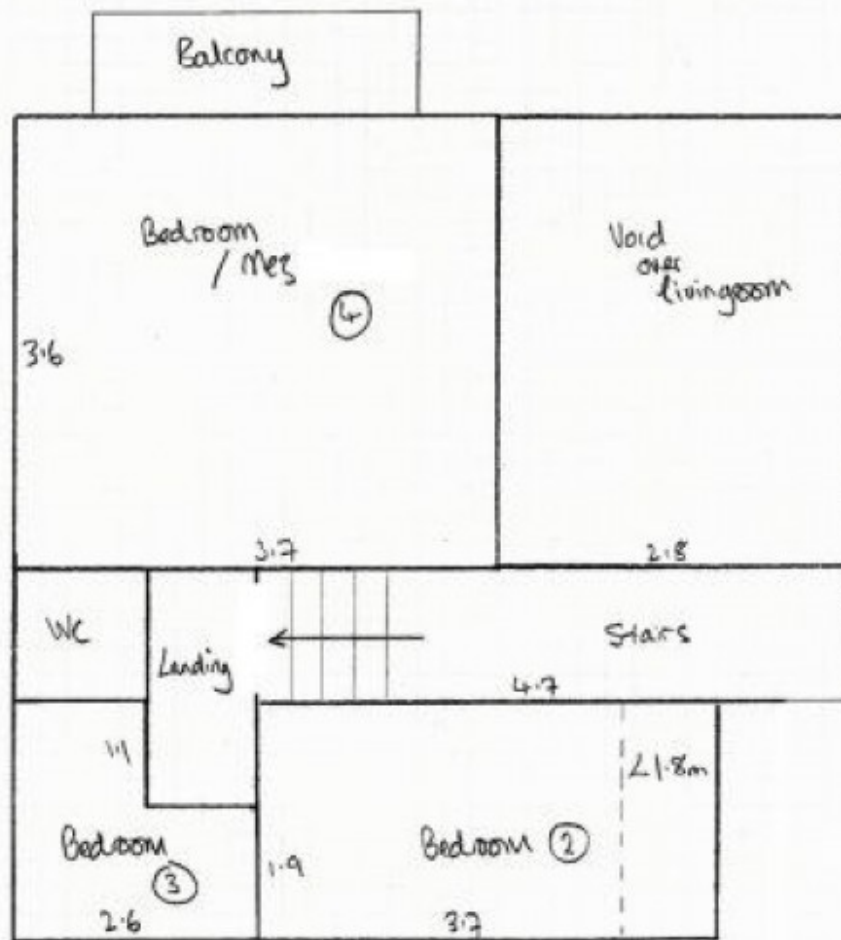
Lower ground floor: entrance with stairs leading to the ground floor, large garage, oil tank and boiler storage.

Ground floor: open plan living/dining room with log burner and dual aspect balcony, kitchen, bedroom, shower room, WC.

First floor: 3 bedrooms (one with balcony), WC.







Chargeau

Level 3



































