



alpine-property

Alpine Property SAS au capital de 3 450 € - RCS Thonon les Bains 508 578 556 - siège: 153 chemin du Chargeau, 74110 Morzine, France - Titulaire de la Carte Professionnelle n° CPI 7401 2016 000 017 391 délivrée par la CCI de la Haute Savoie

Tel: +44 (0)208 123 2384

Email: info@alpine-property.com

Web: www.alpine-property.com

Appt. Cyclamen

Les Carroz d'Araches, Flaine & Les Carroz, Grand Massif

193 500 €uros



Contact

Contact **Aude Garnier** about this property.

Tel: +33 6 62 69 12 72

Email: aude@alpine-property.com

Key Features

Price	193 500 €uros
Status	FOR SALE
Last updated	14/03/2024
Area	Grand Massif
Location	Flaine & Les Carroz
Village	Les Carroz d`Araches
Bedrooms	1
Bathrooms	1
Floor area	26.5 m²
Heating	Gas
Ski access	Ski bus
Nearest skiing	250 m
Garage	None
Drainage	Mains drains
Taxe foncière	572.00 €uros
Annual charges	2000.00 €uros
Number of lots	123
Procédure en cours	No
Energy efficiency rating	E (286)
CO2 emissions	E (60)
Agency fees	Paid by the seller

Property Description

Appt Cyclamens is on the first floor of a building located in the heart of the village of Les Carroz.

It has undergone a complete and high-quality renovation, offering accommodation for 4 people and a beautiful living space.

The modern Alpine-style kitchen is equipped with a dishwasher, a refrigerator, a combination oven, an induction hob, and an extractor hood. It is open to the living room, which features a farmhouse table and a convertible sofa.

The French door opens onto a 5.31 m2 balcony facing south, equipped with a large cupboard and offering views of the Aravis mountains.

The bedroom accommodates a pullout bed and shelves. The modern bathroom is equipped with a shower and a toilet.

Heating and water are included in the charges.

The apartment is sold with a ski locker located on the ground floor of the building, a cellar, and access to the private parking of the residence.

The property is covered by the copropriété rules.







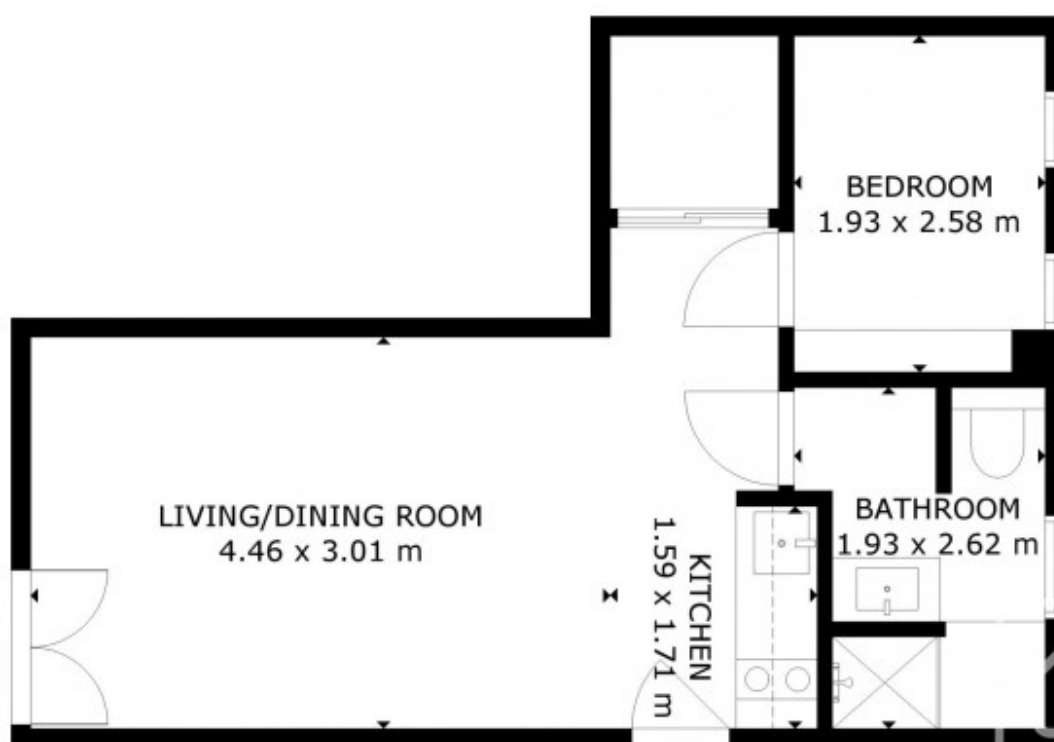












FLOOR 1

GROSS INTERNAL AREA
TOTAL: 31 m²
FLOOR 1: 31 m²
SIZE AND DIMENSIONS ARE APPROXIMATE, ACTUAL MAY VARY