



**alpine-property**

Alpine Property SAS au capital de 3 450 € - RCS Thonon les Bains 508 578 556 - siège: 153 chemin du Chargeau, 74110 Morzine, France - Titulaire de la Carte Professionnelle n° CPI 7401 2016 000 017 391 délivrée par la CCI de la Haute Savoie

Tel: +44 (0)208 123 2384

Email: [info@alpine-property.com](mailto:info@alpine-property.com)

Web: [www.alpine-property.com](http://www.alpine-property.com)

# Appt. Meranti

**Montriond, Morzine, Portes Du Soleil**

**480 000 €uros**



## Contact

Contact **Marie-Anne Denicolo** about this property.

**Tel:** +33 6 08 15 46 54

**Email:** [marieanne@alpine-property.com](mailto:marieanne@alpine-property.com)

# Key Features

<b>Price</b>	480 000 Euros
<b>Status</b>	FOR SALE
<b>Last updated</b>	09/04/2024
<b>Area</b>	Portes Du Soleil
<b>Location</b>	Morzine
<b>Village</b>	Montriond
<b>Bedrooms</b>	2
<b>Bathrooms</b>	2
<b>Floor area</b>	58 m²
<b>Heating</b>	Underfloor heating
<b>Ski access</b>	Ski bus
<b>Nearest skiing</b>	1 km
<b>Nearest shops</b>	1 km
<b>Garage</b>	Covered parking
<b>Drainage</b>	Mains drains
<b>Number of lots</b>	9
<b>Procédure en cours</b>	No
<b>Energy efficiency rating</b>	E (266)
<b>CO2 emissions</b>	C (12)
<b>Agency fees</b>	Paid by the seller

## Property Description

This apartment is located at the juncture between Morzine and the charming village of Montriond. Its situation is ideal, being in close proximity to free shuttles to Morzine and Montriond, facilitating access to the village centres and the Portes du Soleil ski slopes.

On the 1st floor of the residence, this apartment is composed as follows:

An entrance leading to a fully equipped kitchen open to the living/dining area with access to the southwest-facing balcony, two bedrooms each with its own shower room and wc.

A ski locker equipped with a boot dryer and a covered parking space complete this property.

The property is covered by the copropriété rules.

480 000 € TTC

ES Residence



Niveau: R+1

Orientation: Sud Ouest

**APARTMENT B5**

CUISINE / SEJOUR 28,07 m<sup>2</sup>

CH.1 14,13 m<sup>2</sup>

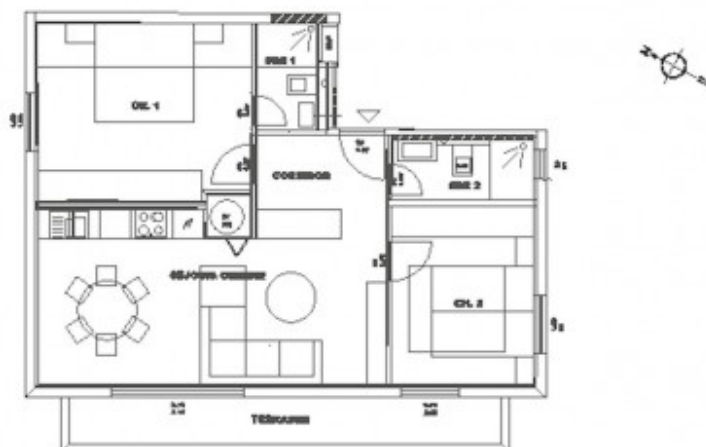
SDE 1 3,27 m<sup>2</sup>

CH.2 9,82 m<sup>2</sup>

SDE 2 2,61 m<sup>2</sup>

Surface Totale Logement Carrez: 58,00 m<sup>2</sup>

TERRASSE 8,00 m<sup>2</sup>



alpine-property



alpine-property













